

Contractor Must Check And Verify All Dimensions On The Job.
 Do Not Scale The Drawings.
 All Drawings, Specifications And Related Documents Are The Copyright Of
 The Architect And Must Be Returned Upon Request.
 Reproduction Of Drawings, Specifications And Related Documents
 In Part Or Whole Is Forbidden Without The Architects Written Permission.
 This Drawing Is Not To Be Used For Construction Until Signed By The
 Architect.
 Date:



KIRKOR ARCHITECTS + PLANNERS

20 Martin Ross Avenue, Toronto, Ontario, M3J 2K8
 T(416) 665-6060, F(416) 665-1234, www.kirkorarchitects.com

No.:	Revision:	Date:
------	-----------	-------



LADIES GOLF CLUB OF TORONTO

ROYAL ORCHARD BLVD.

MARKHAM, ONTARIO



1.	Rezoning Submission	March 9, 2018
No.:	Issued For:	Date:

Drawing Title:

Cover Sheet

Project:
Tridel

Ladies' Golf Club of Toronto

7859 Yonge Street
Scale:

Author	Drawn by:
Checker	Checked by:
17-069	Project No.:
March 7, 2018	Date:
	Drawing No.:

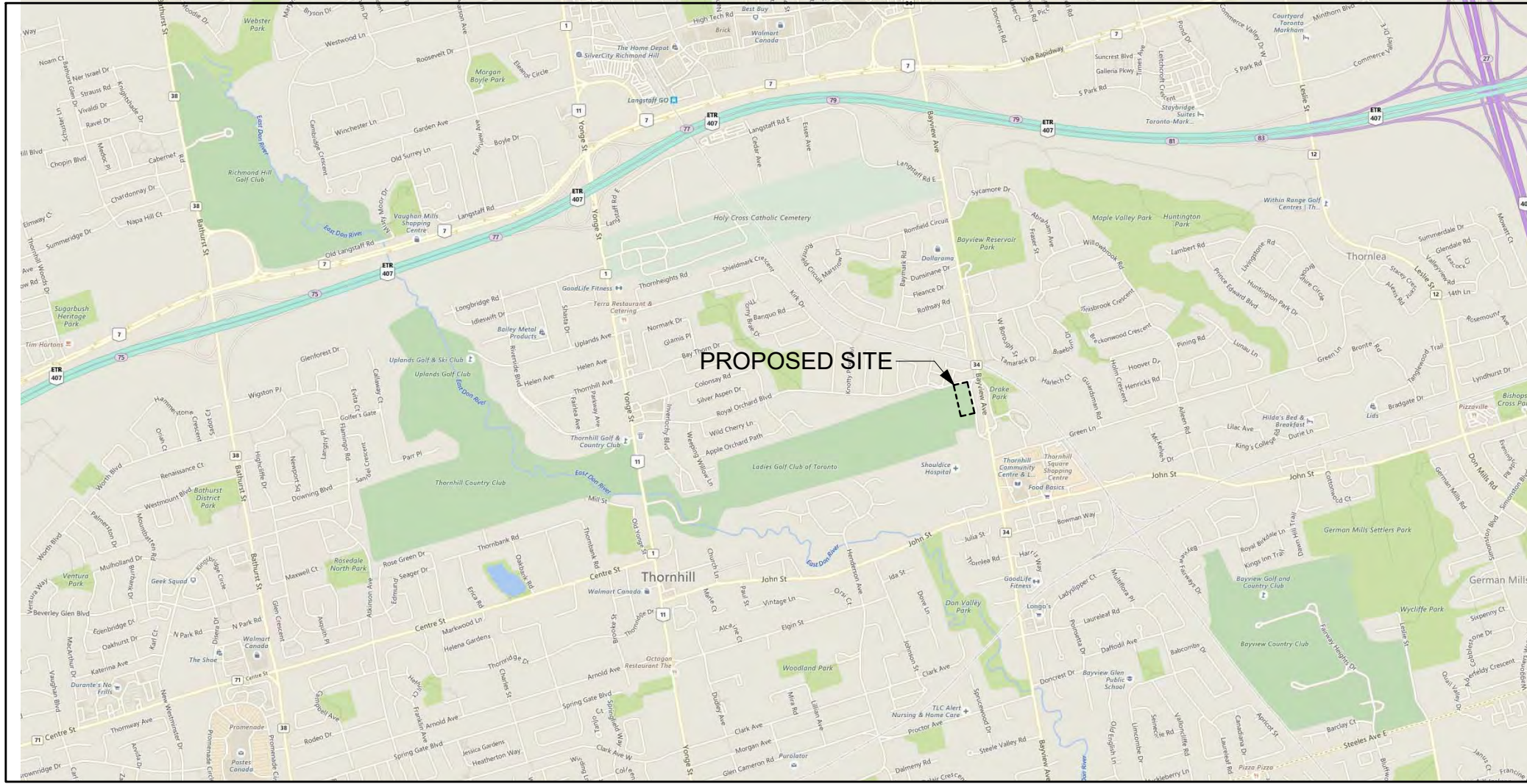
A0.0



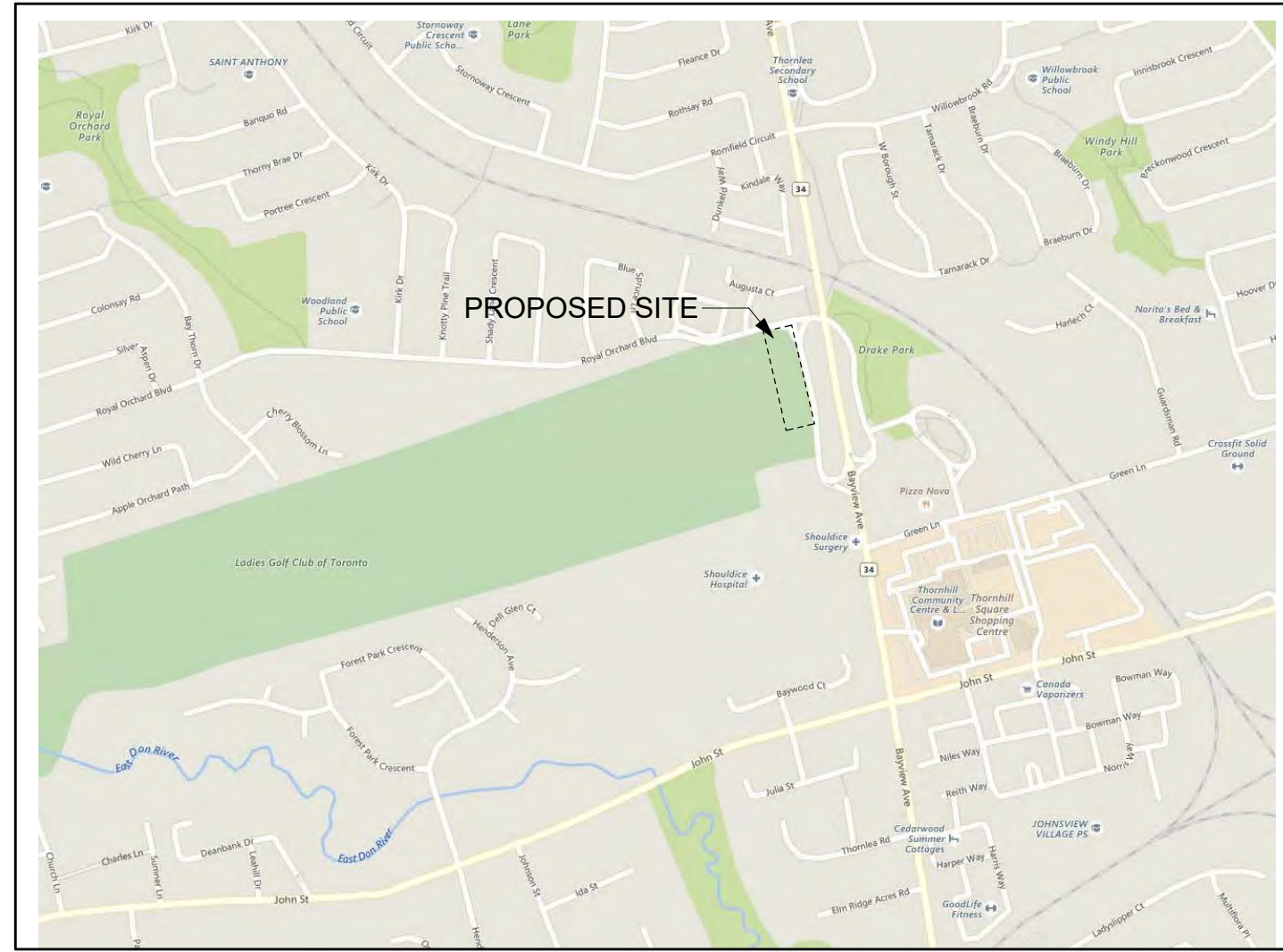
KIRKOR ARCHITECTS + PLANNERS

20 Martin Ross Avenue, Toronto, Ontario, M3J 2K8
T(416) 665-6060, F(416) 665-1234, www.kirkorarchitects.com

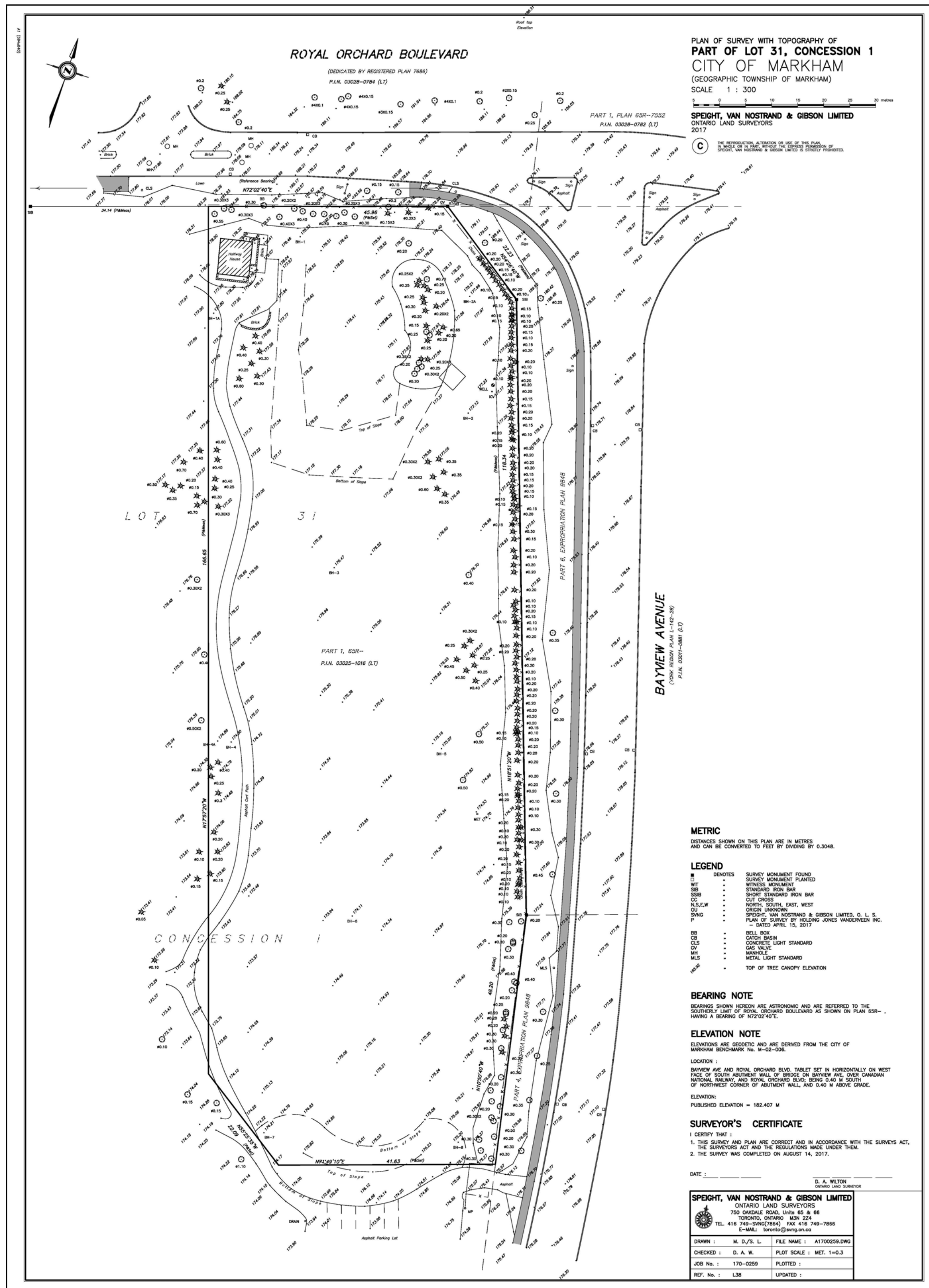
No.: Revision: Date:



Context Map 5
NTS A1.1



Context Map 4
NTS A1.1



Site Survey 3
NTS A1.1

1.0 SITE AREA				
Site	hectare	acres	sq. m.	sq. ft.
1.1 7859 Yonge Street, Parcel B	1.07	2.65	10,714.66	115,334
1.2 Park Dedication	0.20	0.49	2,000.00	21,526
1.3 Net Site Area	0.87	2.15	8,714.66	93,808

2.0 Proposed GFA					
Level	sq. m.	sq. ft.	Level	sq. m.	sq. ft.
Levels P2 to P1	2 x 300.00	600.00	6,458	600.00	6,458
Level P1	1 x 1,958.55	1,958.55	21,082	1,958.55	21,082
Level 1	1 x 1,503.30	1,503.30	16,181	1,503.30	16,181
Level 2	1 x 1,465.18	1,465.18	15,771	1,465.18	15,771
Level 3	1 x 1,306.11	1,306.11	14,059	1,306.11	14,059
Level 4	1 x 1,231.54	1,231.54	13,256	1,231.54	13,256
Level 5	1 x 1,170.71	1,170.71	12,601	1,170.71	12,601
Level 6	1 x 1,099.45	1,099.45	11,834	1,099.45	11,834
Level 7	1 x 1,048.15	1,048.15	11,282	1,048.15	11,282
Level 8	1 x 994.36	994.36	10,703	994.36	10,703
Level 9	1 x 936.28	936.28	10,076	936.28	10,076
Level 10	1 x 894.14	789.14	8,494	789.14	8,494
Level 11	1 x 855.44	655.44	7,055	655.44	7,055
Level 12	1 x 482.02	482.02	5,188	482.02	5,188
Total Proposed GFA		15,240.23	164,644		

2.1 Proposed Building A GFA					
Level	sq. m.	sq. ft.	Level	sq. m.	sq. ft.
Levels P2 to P1	2 x 300.00	600.00	6,458	600.00	6,458
Level P1	1 x 1,261.42	1,261.42	13,578	1,261.42	13,578
Level 1	1 x 1,750.00	1,750.00	18,891	1,750.00	18,891
Level 2	1 x 1,561.23	1,561.23	16,805	1,561.23	16,805
Level 3	1 x 1,365.19	1,365.19	14,695	1,365.19	14,695
Level 4	1 x 1,360.97	1,360.97	14,649	1,360.97	14,649
Level 5	1 x 1,305.33	1,305.33	14,050	1,305.33	14,050
Level 6	1 x 1,231.54	1,231.54	13,256	1,231.54	13,256
Level 7	1 x 1,170.71	1,170.71	12,601	1,170.71	12,601
Level 8	1 x 1,099.45	1,099.45	11,832	1,099.45	11,832
Level 9	1 x 1,048.15	1,048.15	11,282	1,048.15	11,282
Level 10	1 x 994.36	994.36	10,703	994.36	10,703
Level 11	1 x 936.28	936.28	10,076	936.28	10,076
Level 12	1 x 789.14	789.14	8,494	789.14	8,494
Level 13	1 x 655.44	655.44	7,055	655.44	7,055
Level 14	1 x 482.02	482.02	5,188	482.02	5,188
Total Proposed Building A GFA		17,615.98	189,617		

2.2 Proposed Building B GFA					
Level	sq. m.	sq. ft.	Level	sq. m.	sq. ft.
Levels P2 to P1	2 x 300.00	600.00	6,458	600.00	6,458
Level P1	1 x 1,261.42	1,261.42	13,578	1,261.42	13,578
Level 1	1 x 1,750.00	1,750.00	18,891	1,750.00	18,891
Level 2	1 x 1,561.23	1,561.23	16,805	1,561.23	16,805
Level 3	1 x 1,365.19	1,365.19	14,695	1,365.19	14,695
Level 4	1 x 1,360.97	1,360.97	14,649	1,360.97	14,649
Level 5	1 x 1,305.33	1,305.33	14,050	1,305.33	14,050
Level 6	1 x 1,231.54	1,231.54	13,256	1,231.54	13,256
Level 7	1 x 1,170.71	1,170.71	12,601	1,170.71	12,601
Level 8	1 x 1,099.45	1,099.45	11,832	1,099.45	11,832
Level 9	1 x 1,048.15	1,048.15	11,282	1,048.15	11,282
Level 10	1 x 994.36	994.36	10,703	994.36	10,703
Level 11	1 x 936.28	936.28	10,076	936.28	10,076
Level 12	1 x 789.14	789.14	8,494	789.14	8,494
Level 13	1 x 655.44	655.44	7,055	655.44	7,055
Level 14	1 x 482.02	482.02	5,188	482.02	5,188
Total Proposed Building B GFA		17,615.98	189,617		

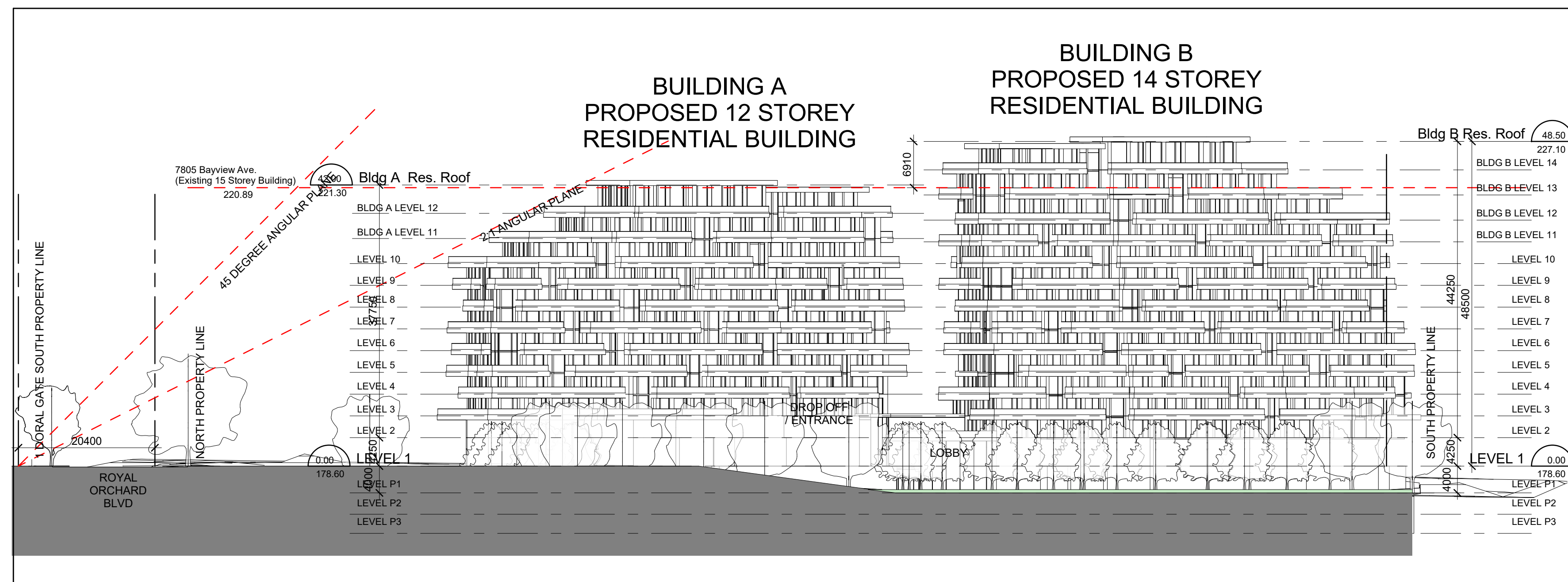
2.3 Total Proposed GFA					
Building	sq. m.	sq. ft.	Building	sq. m.	sq. ft.
Building A	15,240.23	164,644	Building B	17,615.98	189,617
Total Proposed GFA	32,856.21	353,661			

3.0 Proposed Density - FSI				
Total Proposed GFA / Net Site Area (Item 2.3 / Item 1.3)				
			3.77	

4.0 Unit Count				
Level	Building A units	Building B units	Level	units
Level P1	1 x 13	1 x 9	Level 7	22
Level 2	1 x 14	1 x 9	Level 8	23
Level 3	1 x 8	1 x 8	Level 9	48
Levels 4 to 5	2 x 7	2 x 8	Level 10	30
Level 6	1 x 7	1 x 7	Level 11	14
Level 7	1 x 6	1 x 7	Level 12	13
Level 8	1 x 5	1 x 7	Level 13	12
Level 9	1 x 4	1 x 6	Level 14	10
Level 10	1 x 2	1 x 5	Level 15	7
Level 11	1 x 2	1 x 4	Level 16	4
Level 12	1 x 2	1 x 4	Level 17	4
Level 13	1 x 2	1 x 2	Level 18	2
Level 14	1 x 2	1 x 2		
Total Building A Units	89	103	Total Building B Units	192
Percentage of Total Units				

5.0 Vehicular Parking				
Category	ratio	units	Category	spaces
5.1 Min. Parking Required			Residential Occupant	240
Residential Occupant	1.25	x 192	Residential Visitors	48
Residential Visitors	0.25	x 192	Total Parking Required	288
Total Parking Required				
5.2 Parking Provided			Level P1	52
Level P1	1 x	52	Level P2	155
Level P2	1 x	155	Level P3	160
Level P3	1 x	160	Total Parking Provided	367
Total Parking Provided				

Project Statistics 2
NTS A1.1



Massing Diagram - West Elevation 1
Scale: 1 : 500 A1.1

Drawing Title:
Context Plan

Project:
Tridel

Ladies' Golf Club of Toronto

7859 Yonge Street

Scale: 1 : 500

Author

Checked by:

17-069

Project No.:

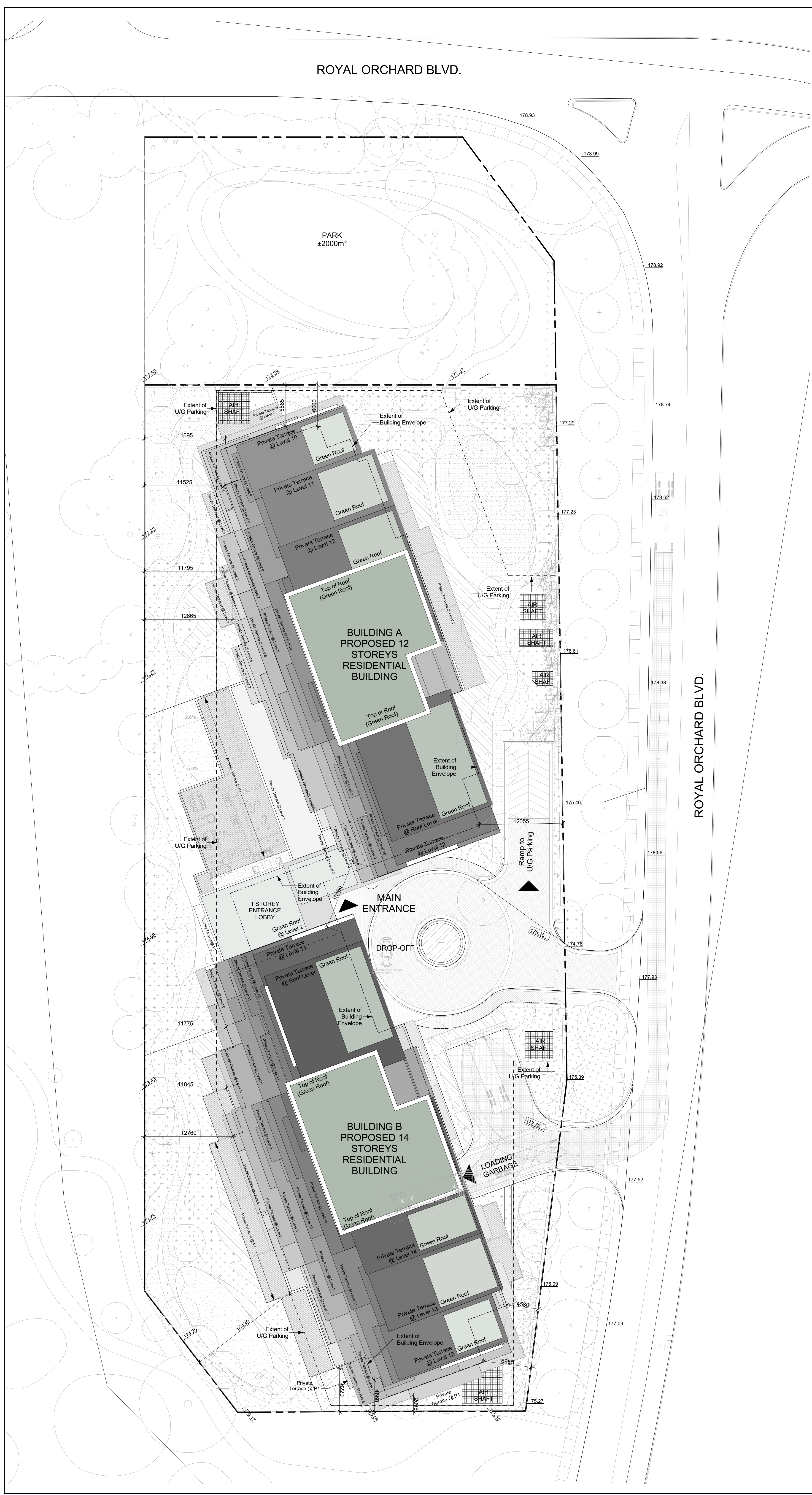
March 7, 2018

Date:

Drawing No.:

A1.1

ROYAL ORCHARD BLVD.



Contractor Must Check And Verify All Dimensions On The Job.
 Do Not Scale The Drawings.
 All Drawings, Specifications And Related Documents Are The Copyright Of The Architect And Must Be Returned Upon Request.
 Reproduction Of Drawings, Specifications And Related Documents In Part Or Whole Is Forbidden Without The Architects Written Permission.
 This Drawing Is Not To Be Used For Construction Until Signed By The Architect.
 Date:



KIRKOR ARCHITECTS + PLANNERS

20 Martin Ross Avenue, Toronto, Ontario, M3J 2K8
 T(416) 665-6060, F(416) 665-1234, www.kirkorarchitects.com

No.: Revision: Date:

1.	Rezoning Submission	March 9, 2018
No.:	Issued For:	Date:

Drawing Title:

Site Plan

Project:
 Tridel

Ladies' Golf Club of Toronto

7859 Yonge Street
 Scale:

1 : 250

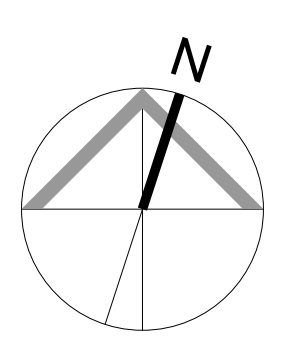
Author Drawn by:

Checker Checked by:

17-069 Project No.:

March 7, 2018 Date:

Drawing No.:



Floor Plan Level 1 **1**
 Scale: 1 : 250 **A1.2**

A1.2