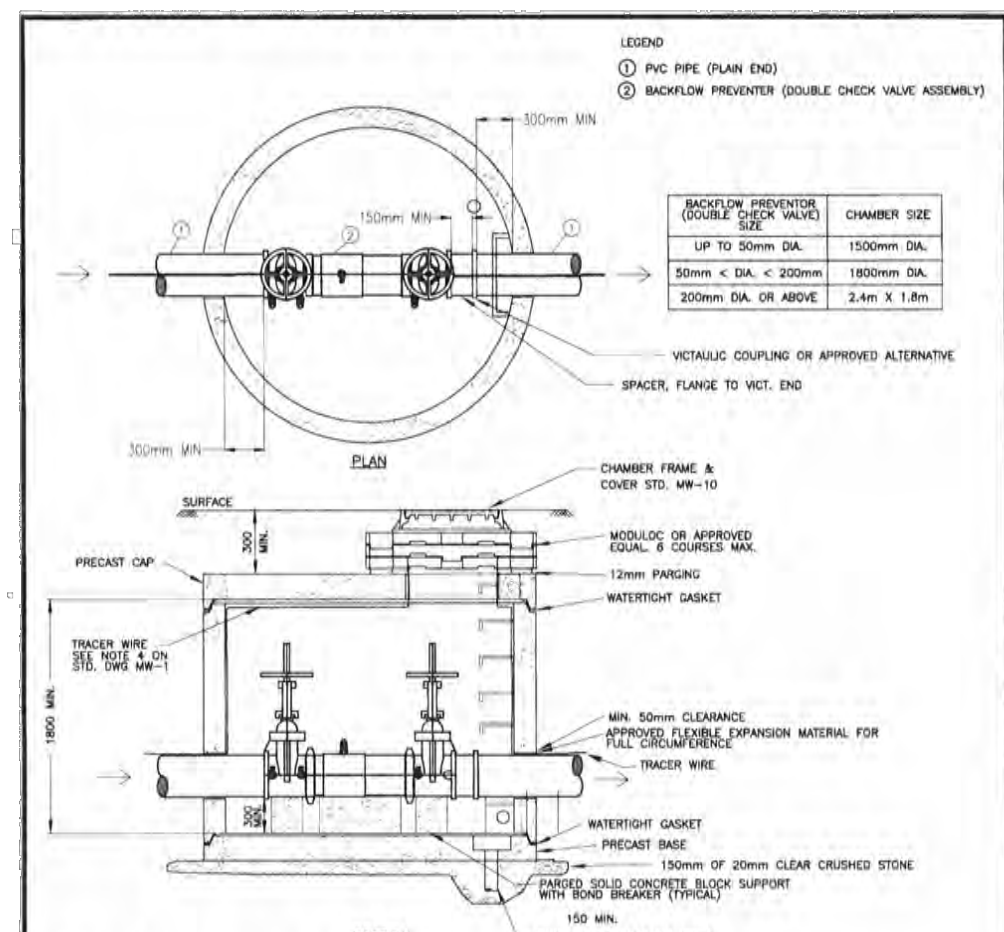


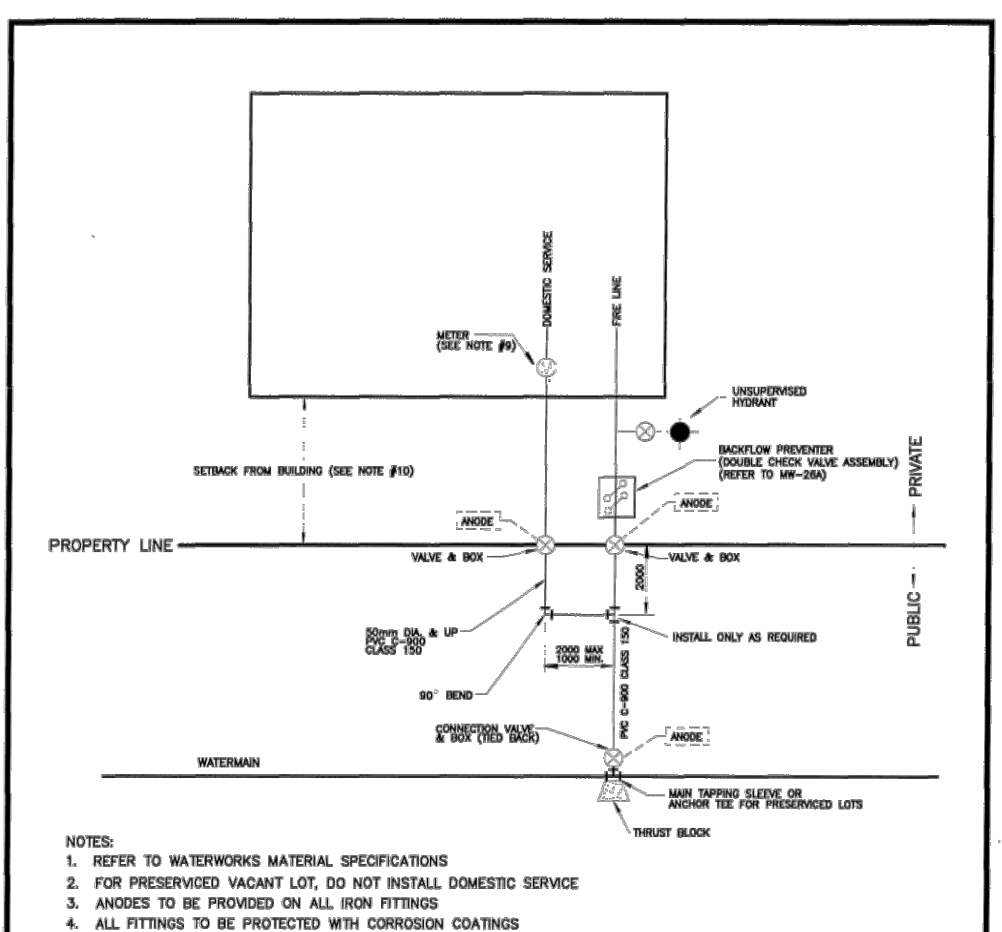
**MARKHAM**  
ENGINEERING DEPARTMENT

DRAWING NAME: PRECAST CONCRETE CATCH BASIN  
REV: 0  
DATE: SEPTEMBER 2010  
SCALE: NTS  
APPROVED BY: [Signature]  
DIRECTOR OF ENGINEERING



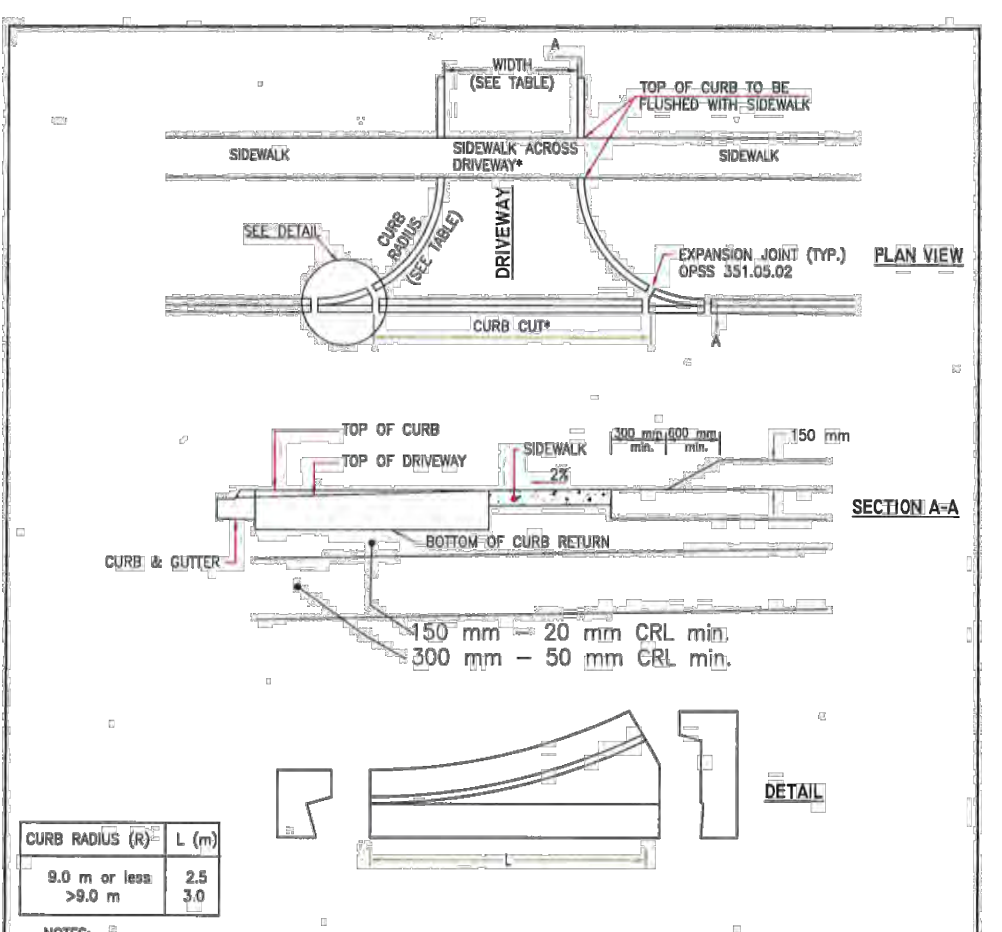
**MARKHAM**  
ENGINEERING DEPARTMENT

DRAWING NAME: BACKFLOW PREVENTER (DOUBLE CHECK VALVE) CHAMBER  
REV: 1  
DATE: OCT 2013  
SCALE: NTS  
APPROVED BY: [Signature]  
DIRECTOR OF ENGINEERING



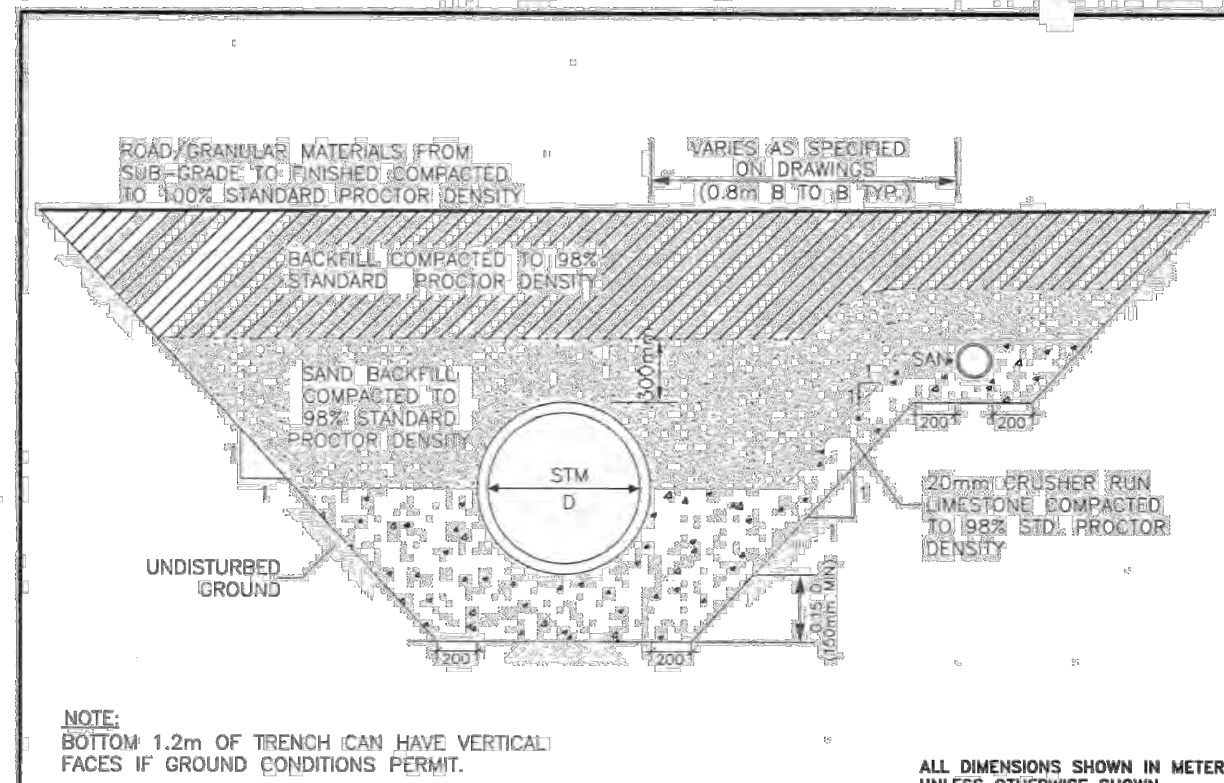
**MARKHAM**  
ENGINEERING DEPARTMENT

DRAWING NAME: WATER SERVICE CONNECTIONS FOR SINGLE ICI/COMMON ELEMENT CONDOMINIUM BUILDING  
REV: 0  
DATE: MAY 2012  
SCALE: NTS  
APPROVED BY: [Signature]  
DIRECTOR OF ENGINEERING



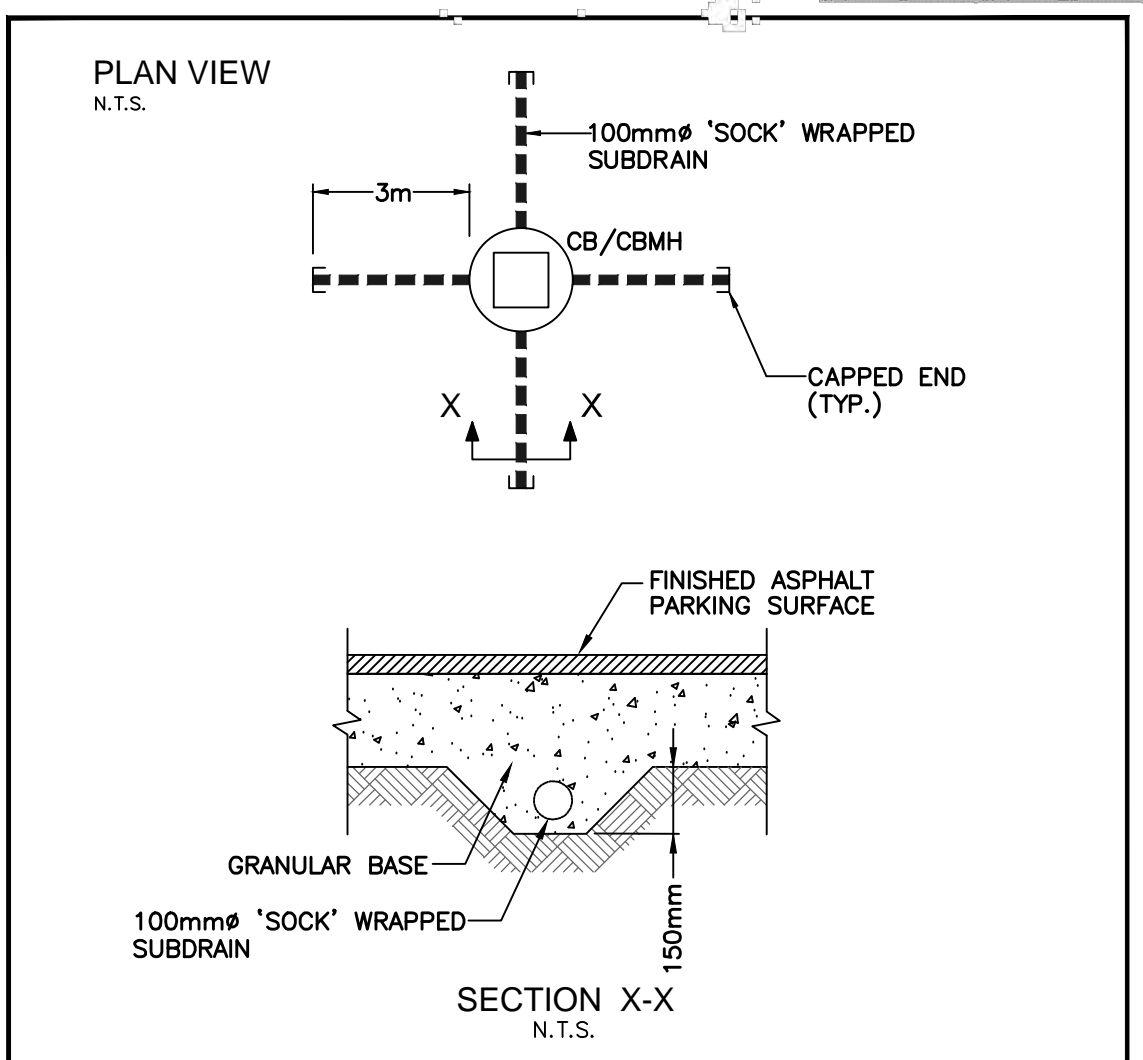
**MARKHAM**  
ENGINEERING DEPARTMENT

DRAWING NAME: DRIVEWAYS FOR INDUSTRIAL/COMMERCIAL/PUBLIC LANWAYS  
REV: 1  
DATE: MAY 2014  
SCALE: NTS  
APPROVED BY: [Signature]  
DIRECTOR OF ENGINEERING

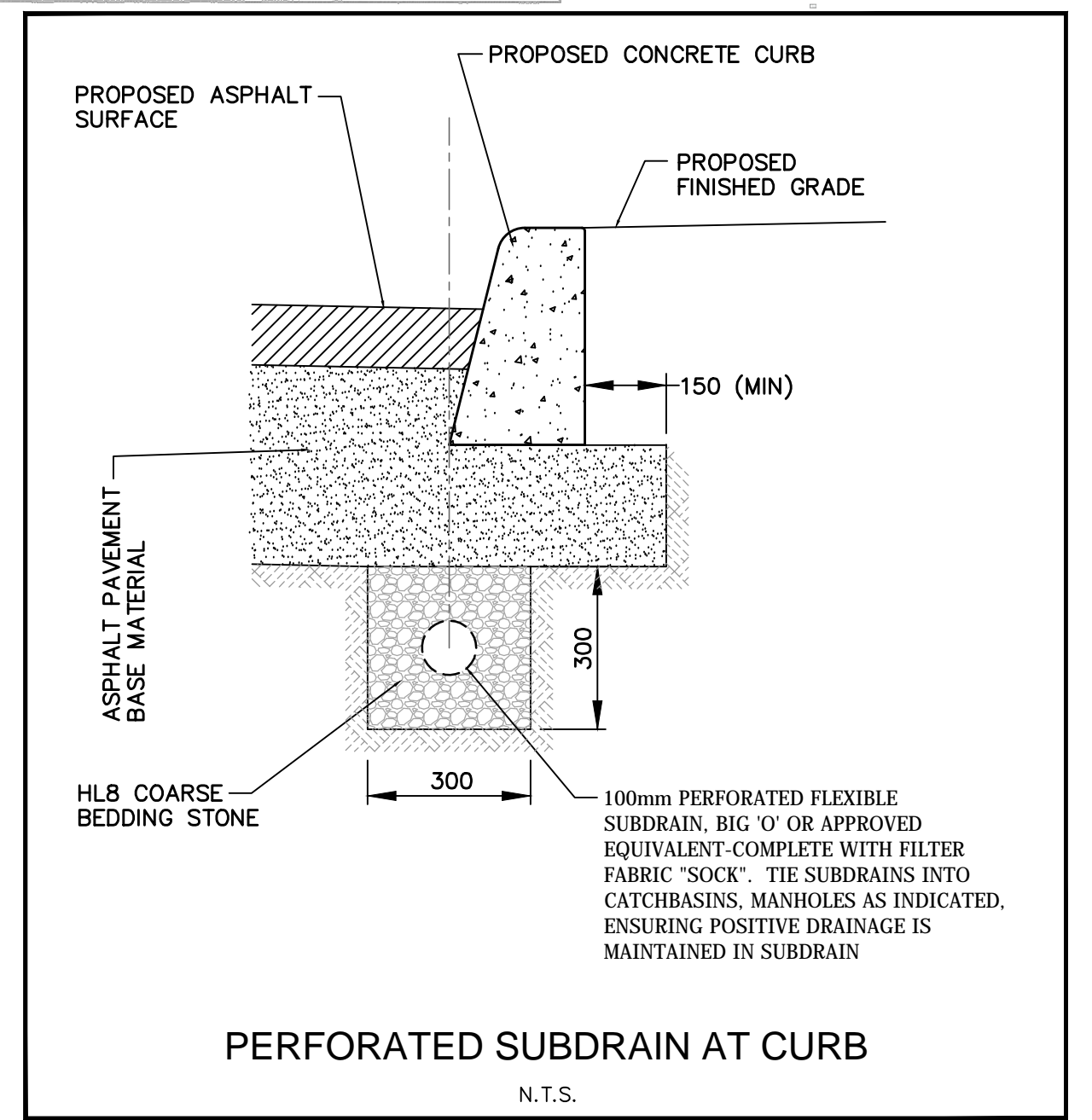


**MARKHAM**  
ENGINEERING DEPARTMENT

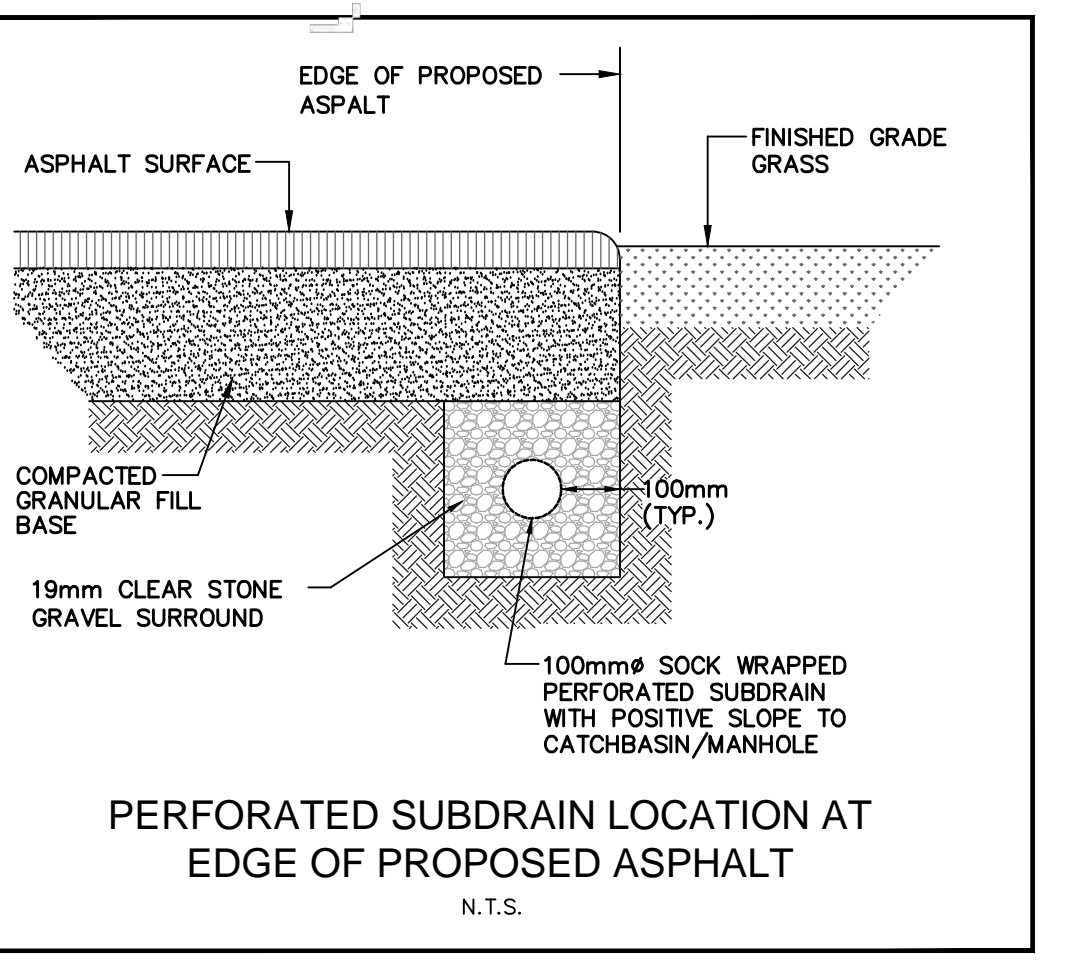
DRAWING NAME: COMMON TRENCH BEDDING DETAILS  
REV: 1  
DATE: AUGUST 2013  
SCALE: NTS  
APPROVED BY: [Signature]  
DIRECTOR OF ENGINEERING



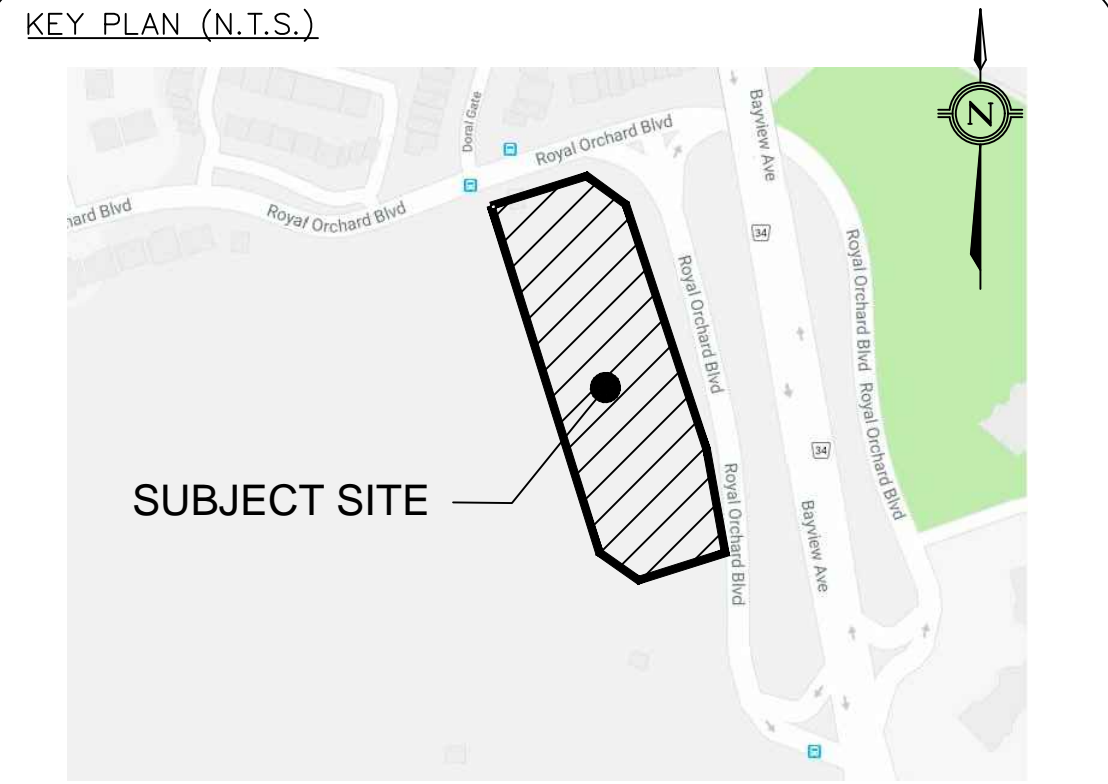
TYPICAL SUBDRAIN CONFIGURATION FOR CATCHBASINS/CATCHBASIN MANHOLES IN PAVED AREAS  
N.T.S.



PERFORATED SUBDRAIN AT CURB  
N.T.S.



PERFORATED SUBDRAIN LOCATION AT EDGE OF PROPOSED ASPHALT  
N.T.S.



**LEGAL & TOPOGRAPHY**  
PLAN OF SURVEY WITH TOPOGRAPHY OF PART OF LOT 31 (GEOGRAPHIC TOWNSHIP OF MARKHAM) CONCESSION 1 (GEOGRAPHIC TOWNSHIP OF MARKHAM) MARKHAM, ONTARIO REGIONAL MUNICIPALITY OF YORK  
PROVIDED BY: SPEIGHT, VAN NOSTRAND & GIBSON LTD.  
DATE: APRIL 15, 2017  
**BENCHMARK**  
ELEVATIONS ARE GEODETIC AND ARE DERIVED FROM THE CITY OF MARKHAM BENCHMARK No. M-02-006.  
PUBLISHED ELEVATION = 182.407 m

1.	ISSUED FOR OPA/ZBA 1ST SUBMISSION	MAR 08/2018	BY	CITY
No.	REVISIONS/ISSUED	DATE	BY	CITY

**counterpoint ENGINEERING**

COUNTERPOINT ENGINEERING INC.  
8395 Jane St., Suite 100, Vaughan, ON L4K 5Y2 Phone 905.326.1404 Fax 905.326.1405

LICENSED PROFESSIONAL ENGINEER  
J. S. YOGANATHAN  
100100545  
MAR 08/18  
PROVINCE OF ONTARIO  
ENGINEER'S STAMP

APPLICANT:  
**TRIDEL CORPORATION**  
4800 DUFFERIN STREET  
TORONTO, ONTARIO

PROJECT:  
**7859 YONGE STREET**  
MARKHAM, ONTARIO

STANDARD DETAILS

DESIGNED BY: ES	CHECKED BY: PT	DATE: MARCH 2018
DRAWING BY: ES	CHECKED BY: PT	PROJECT NO. 17086
SWM BY: RK	CHECKED BY:	DRAWING NO. DT-1
SCALE:		