



tridel.com

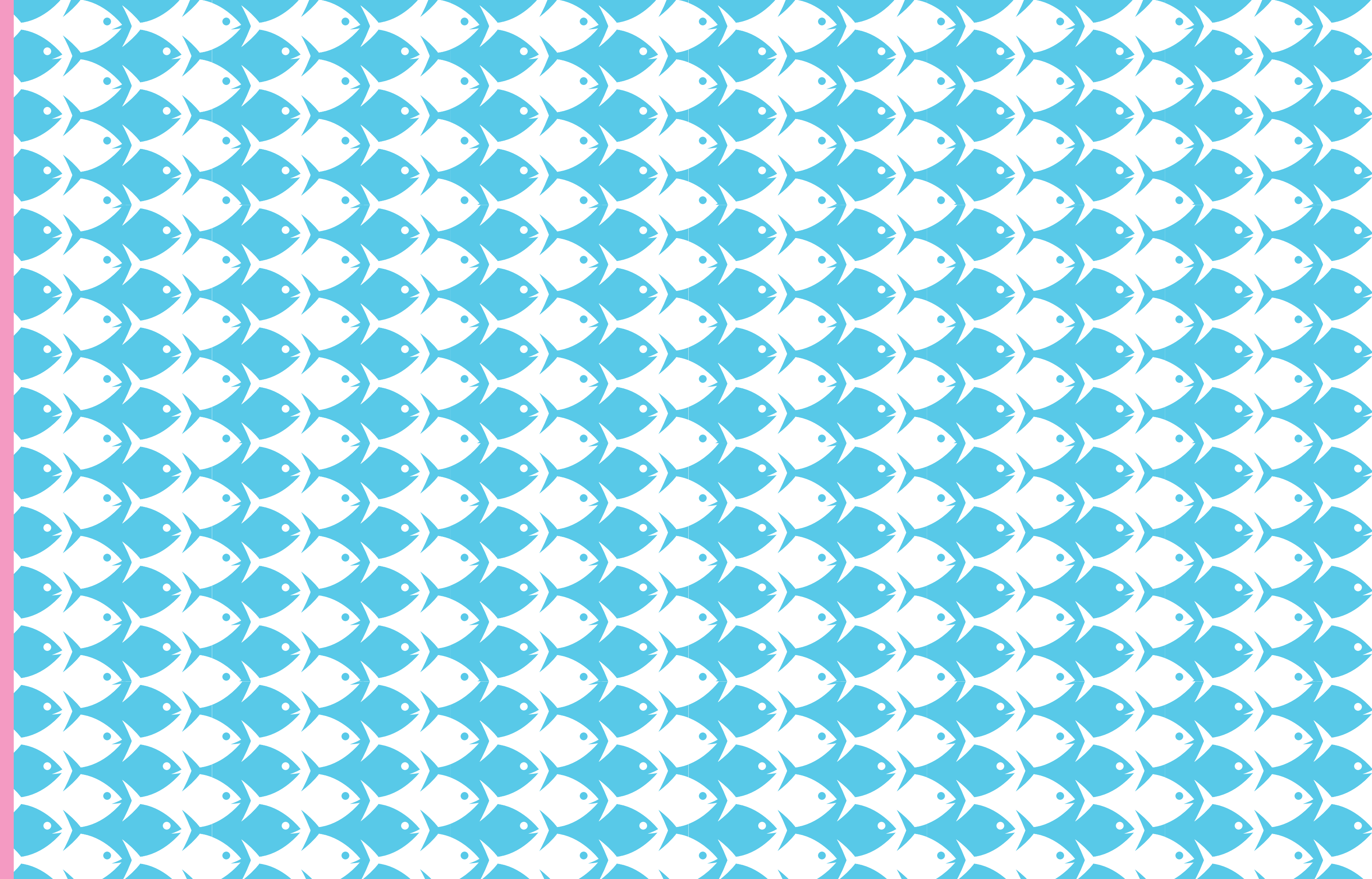
THE LAKESIDE

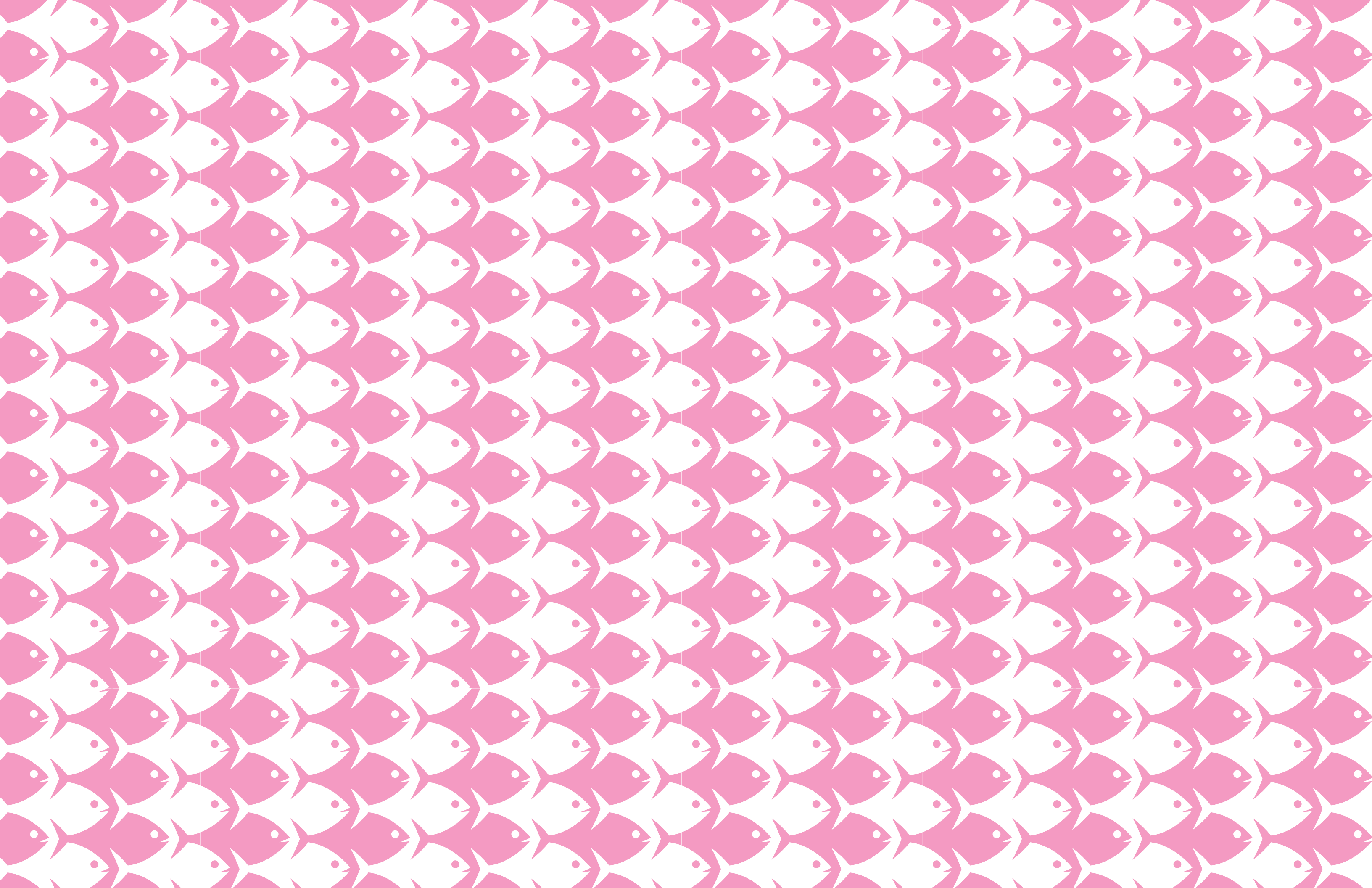
collection

BAYSIDE
TORONTO | A HINES MASTER
PLANNED COMMUNITY.

AQUABELLA
BAYSIDE TORONTO

LUXURY BY THE LAKE





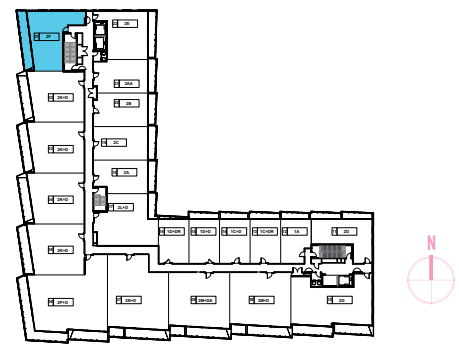
THE LAKESIDE
collection



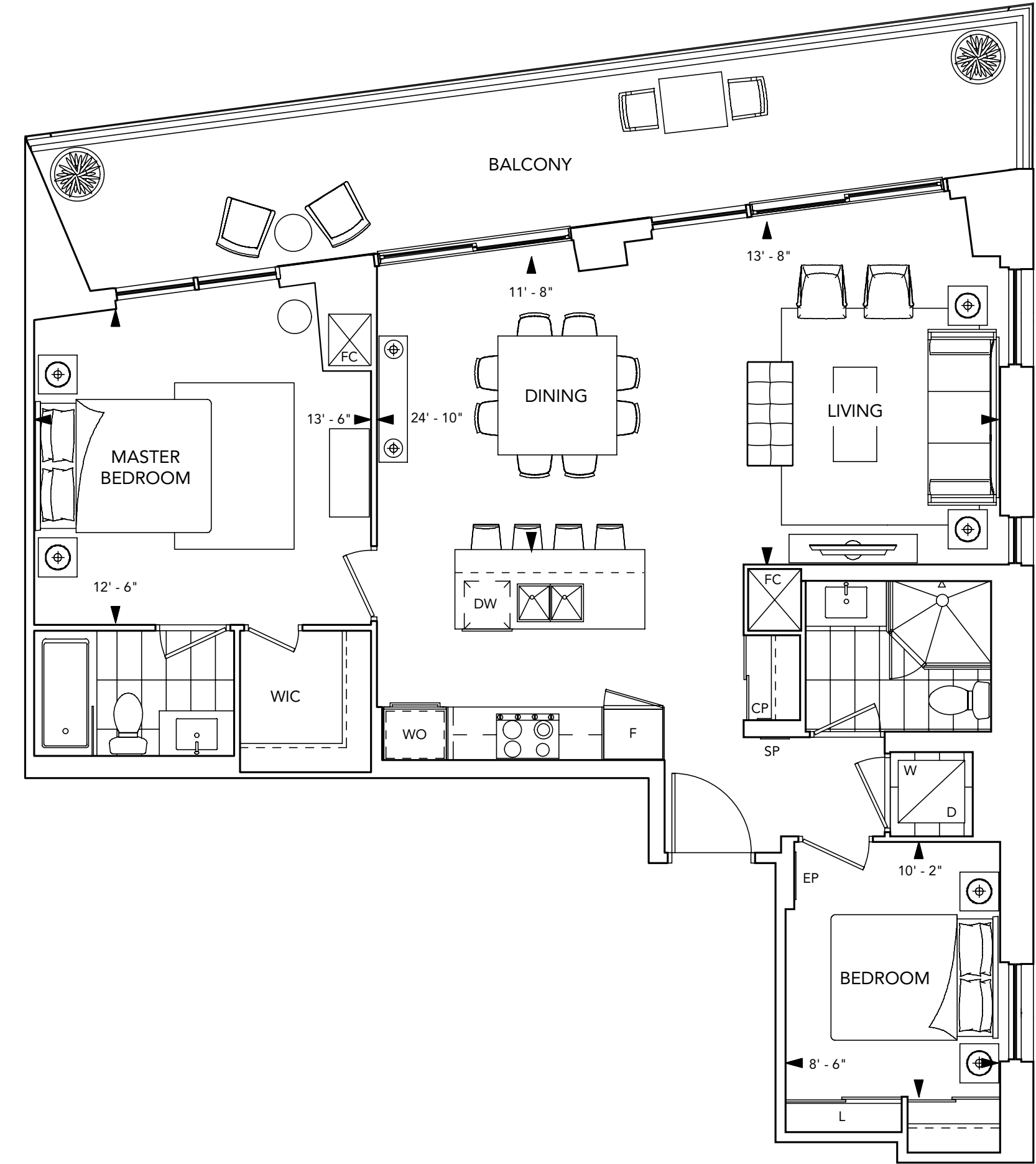
PARK VIEW

SUITE 2F

2 BEDROOM



Floors 3-10

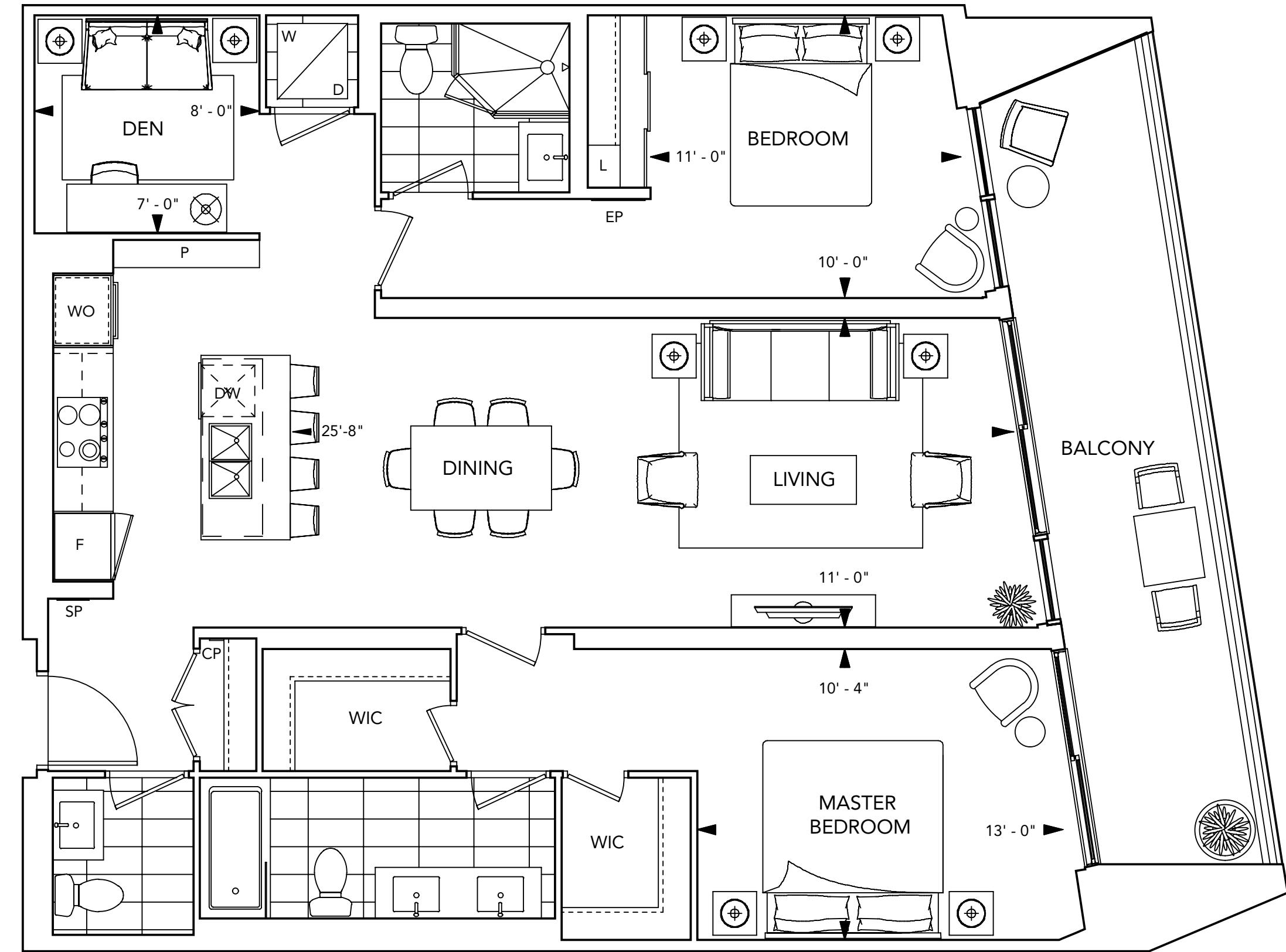


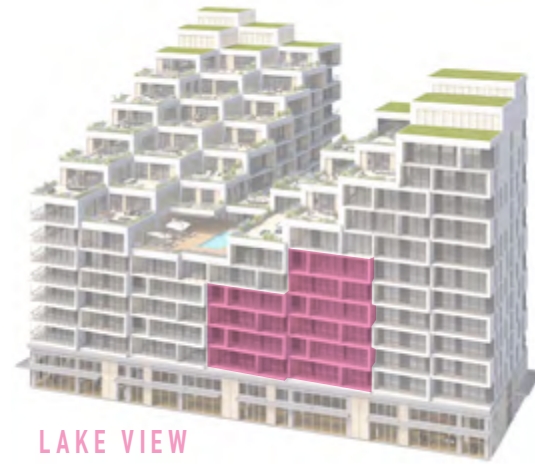


PARK VIEW

SUITE 2K+D

2 BEDROOM + DEN

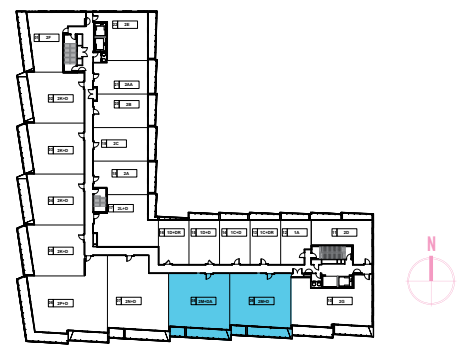




LAKE VIEW

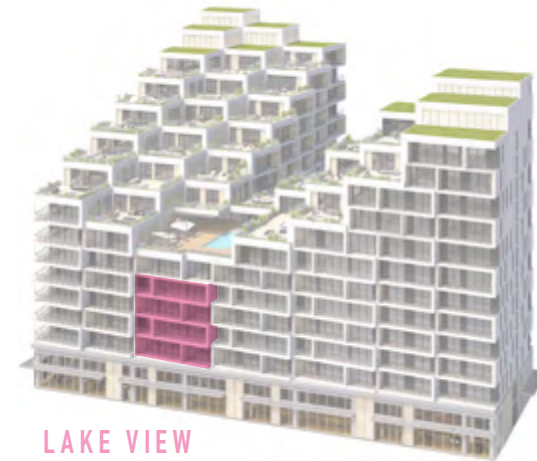
SUITE 2M+D

2 BEDROOM + DEN



Floors 2-7

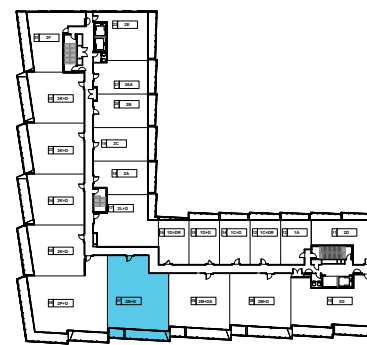




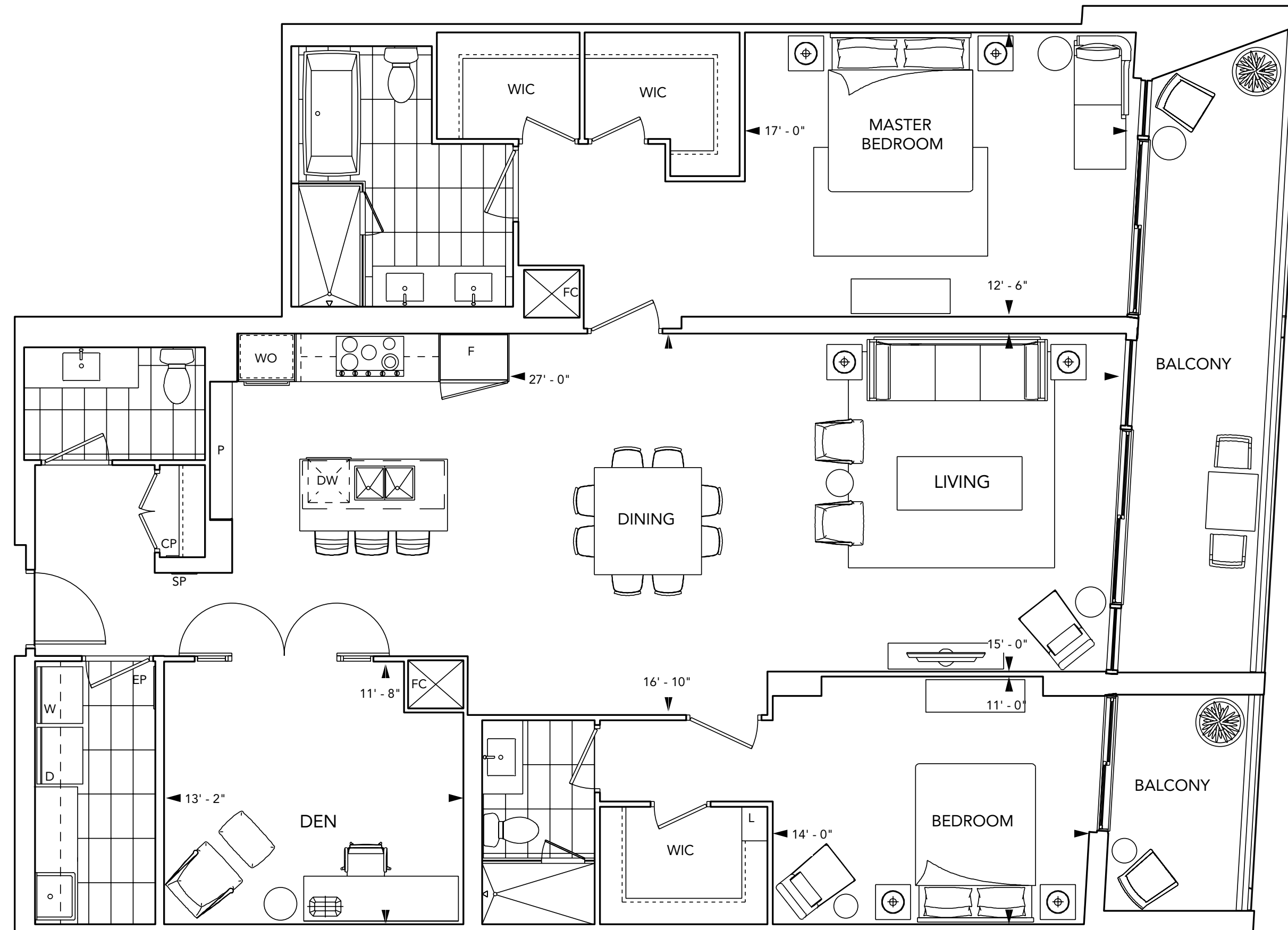
LAKE VIEW

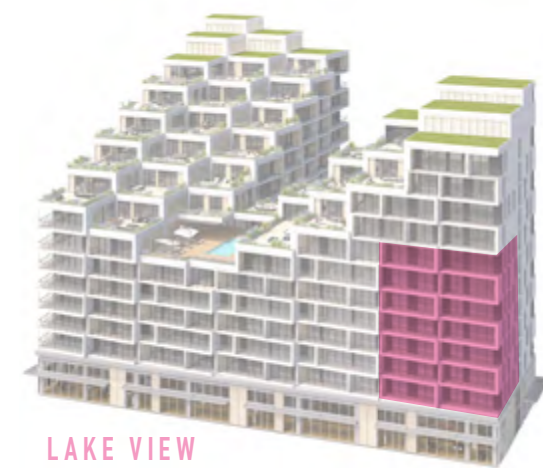
SUITE 2N+D

2 BEDROOM + DEN



Floors 2-5

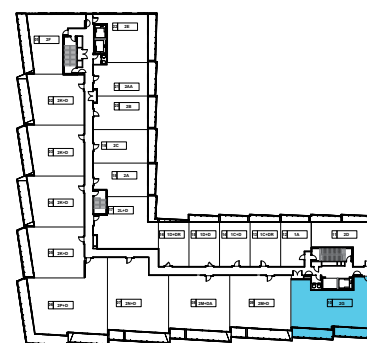




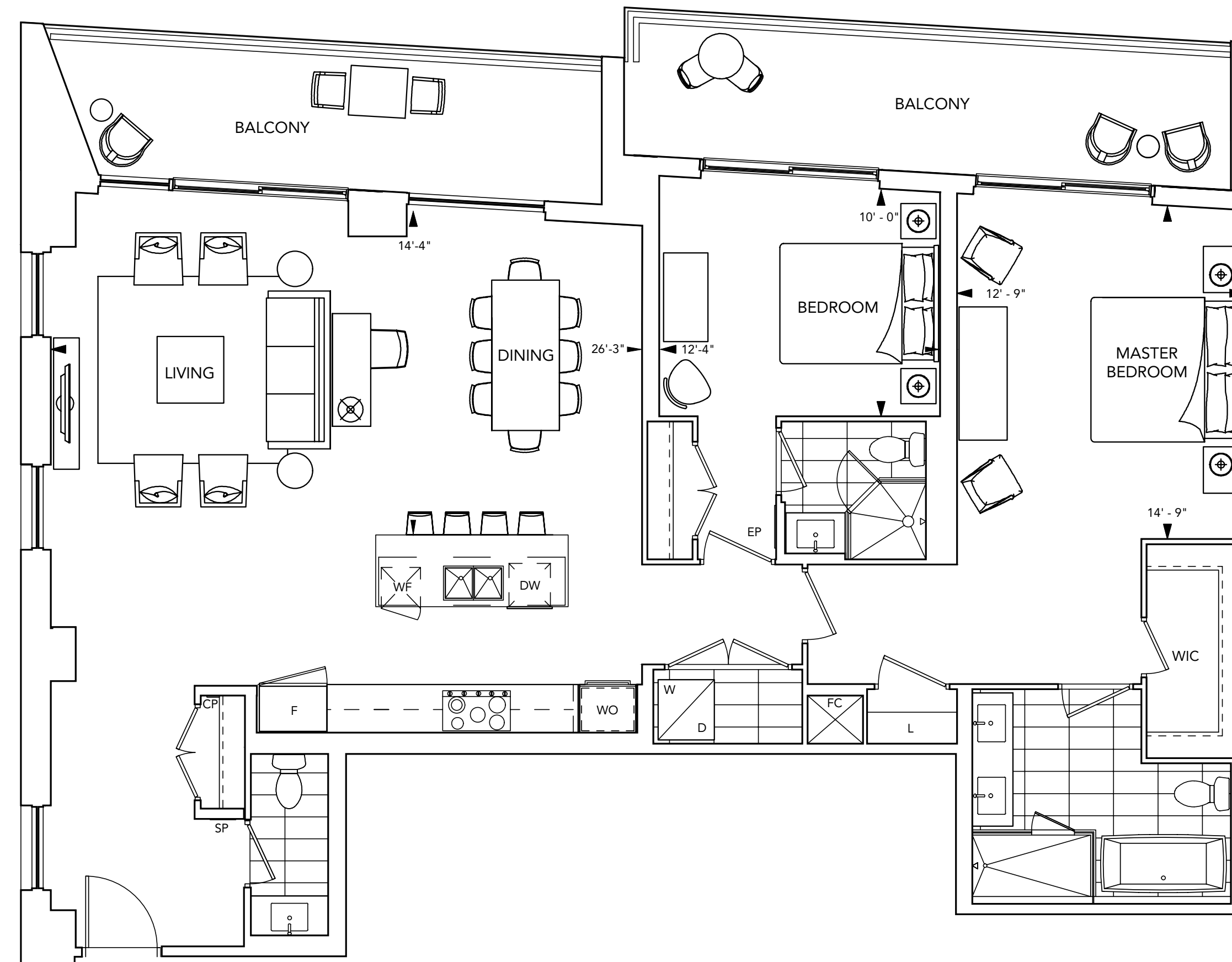
LAKE VIEW

SUITE 2G

2 BEDROOM



Floors 2-8



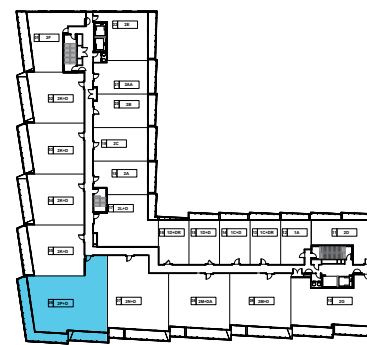


PARK VIEW

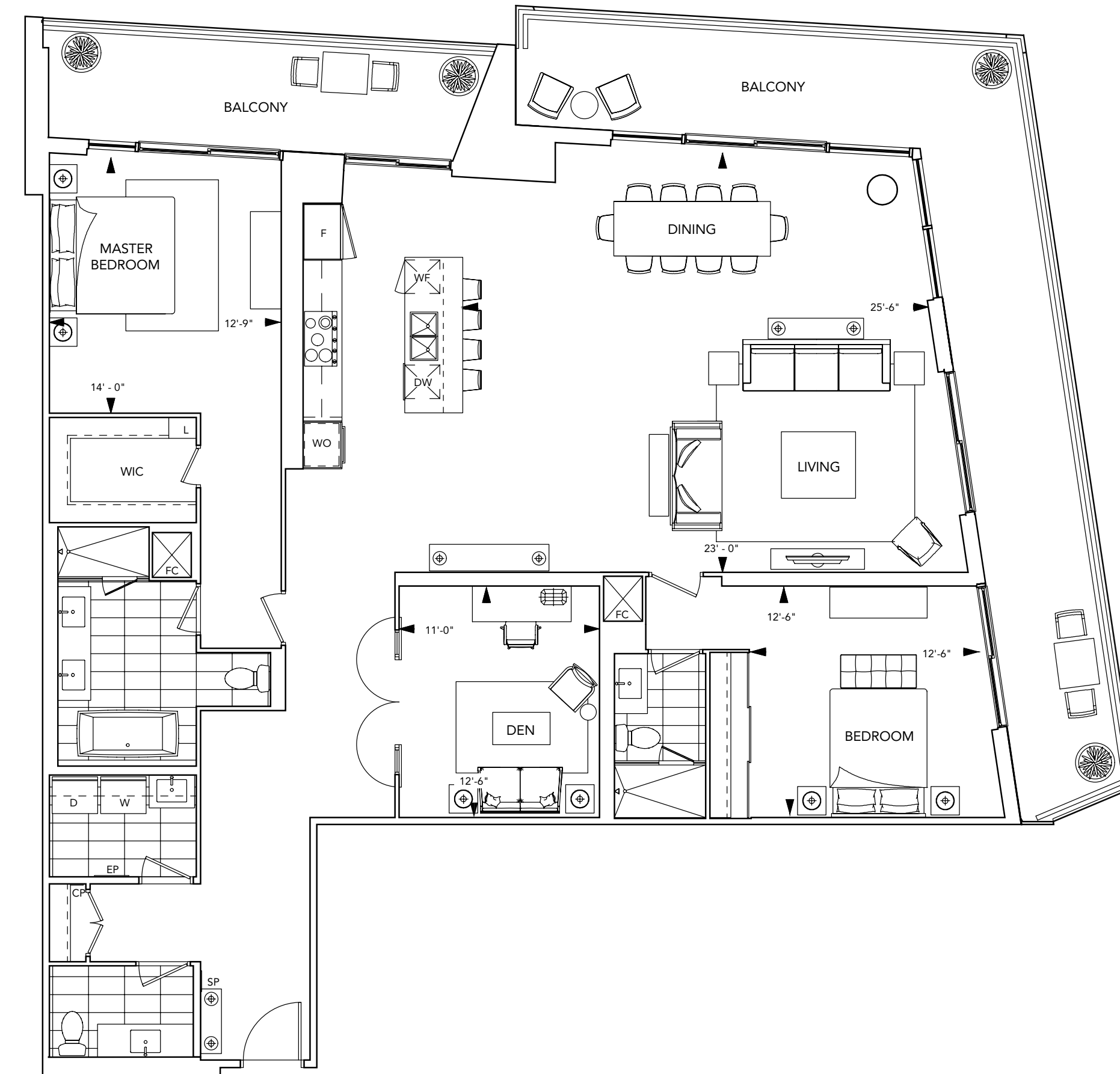
LAKE VIEW

SUITE 2P+D

2 BEDROOM + DEN



Floors 2-5



SUITE FEATURES & FINISHES

GENERAL

- Smooth ceilings painted white in all areas of suite.

FLOOR COVERINGS

- Premium plank engineered floor with acoustic underlay in all rooms excluding bathrooms and laundry.
- Selection of porcelain / natural stone floor tiles for master ensuite and powder room(s). Designer selected premium porcelain floor tiles in other bathroom(s) and laundry.

KITCHEN

- Designer kitchen cabinetry with contemporary, full height flat panel doors complete with built-in appliances. Finishes include a selection of matte finish and wood grain laminate or wood veneer.
- Granite or quartz kitchen countertop and matching backsplash with polished double square edge and deep undermount, stainless steel double bowl sink.
- Distinctive multitask island with waterfall edge, complete with granite or quartz countertop.
- Polished chrome, single lever Hansgrohe kitchen faucet with integrated pull down spray.

- Suites 2F, 2F1, 2K+D, 2K+DA, 2K+DB, 2K+D1, 2R+D, 2Y+D and 2T+D will feature:
 - Miele 30" built-in integrated refrigerator with matching panel door
 - Miele 30" built-in stainless steel convection wall oven
 - Miele 30" built-in gas cooktop
 - Miele 24" integrated dishwasher with matching panel door

- All other suites will feature:
 - Miele 36" built-in integrated refrigerator with matching panel door
 - Miele 30" built-in stainless steel convection wall oven
 - Miele 36" built-in gas cooktop
 - Miele 24" integrated dishwasher with matching panel door

- Built-in, stainless steel microwave complete with trim kit.
- Recessed hood fan insert.
- Energy saving LED under-cabinet lighting.
- Recessed LED lighting in kitchen area.

BATHROOM(S)

- Master ensuite bathroom to feature custom vanity with choice of natural stone or quartz countertop with double square edge and undermount rectangular basin, featuring contemporary flat panel cabinetry. All other bathrooms to feature custom vanity with white quartz countertop.

- Master ensuite bathroom to feature vanity mirror with integrated lighting and storage cabinet. All other bathrooms to feature vanity mirror with wall sconce lighting above.

- 5' soaker tub with polished chrome single lever faucet and glass enclosure (no door). Master ensuite tub features 5'6" free-standing tub with wall mounted faucet where indicated on plan.

- Pressure balanced, temperature controlled chrome shower faucet.
- Porcelain tiles in tub and shower enclosure and toilet wall. Master ensuite bathrooms to feature a choice of porcelain or natural stone tiles.

- Shower light in ceiling of shower stalls and tub(s).
- Energy efficient, low-flow shower head(s).
- Polished chrome vanity faucet in bathroom(s).
- Low-flow high performance toilet(s).
- Shower stall(s) feature frameless glass enclosure with chrome hardware.

POWDER ROOM(S)

- Custom vanity with choice of natural stone or quartz countertop with vessel sink, featuring flat panel cabinetry.
- Vanity mirror with wall sconce lighting above.
- Hansgrohe polished chrome vanity faucet in bathroom(s).
- Low-flow high performance toilet(s).