



Scala Collection

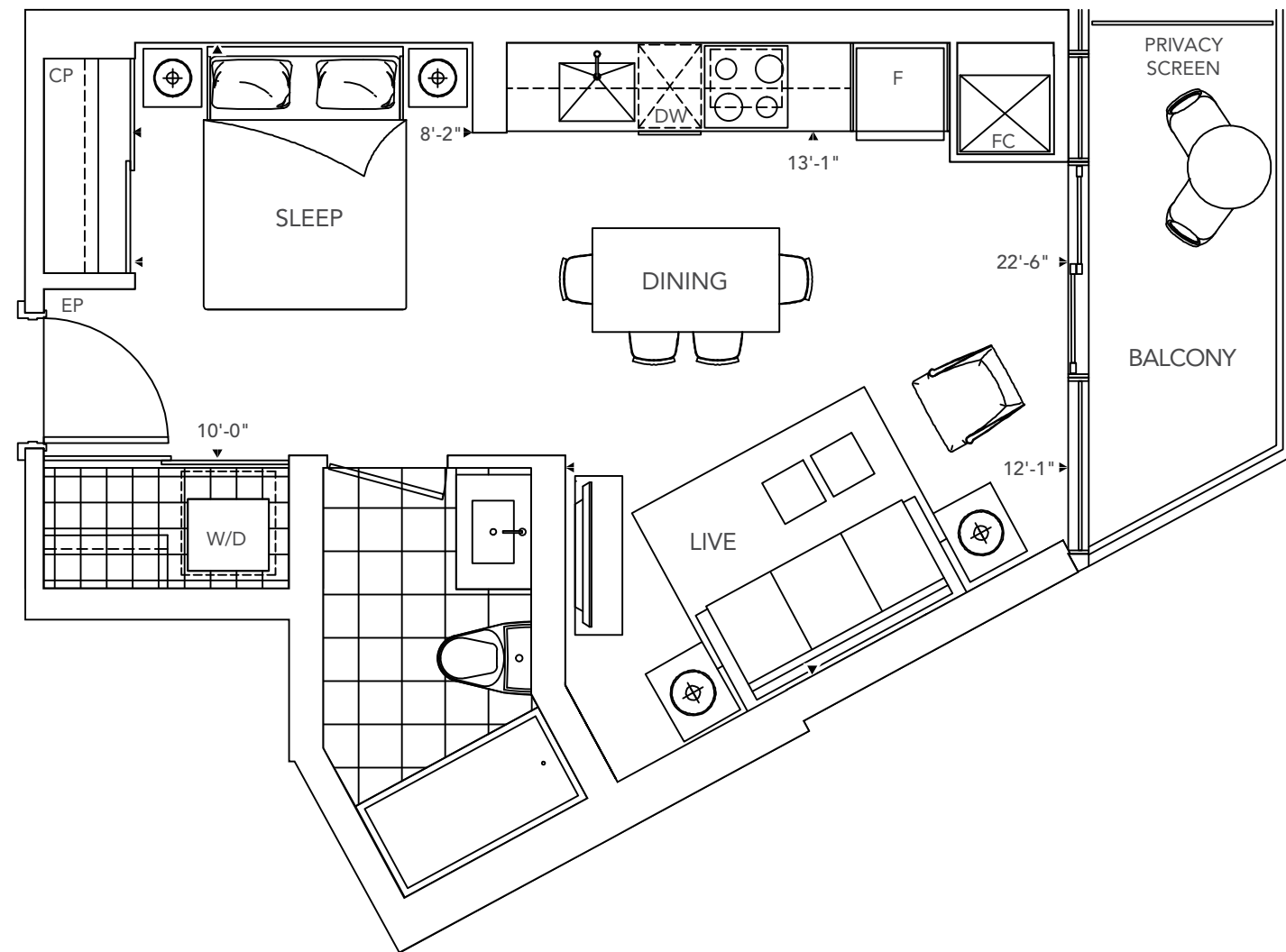
THE SCALA COLLECTION PLACES AN EMPHASIS ON SPACIOUSLY DESIGNED SUITES OFFERING INCOMPARABLE VIEWS AND SMARTLY APPOINTED FEATURES AND FINISHES THAT ENHANCE EVERY ELEMENT OF YOUR HOME.

S1

Studio

01

FACING NORTH



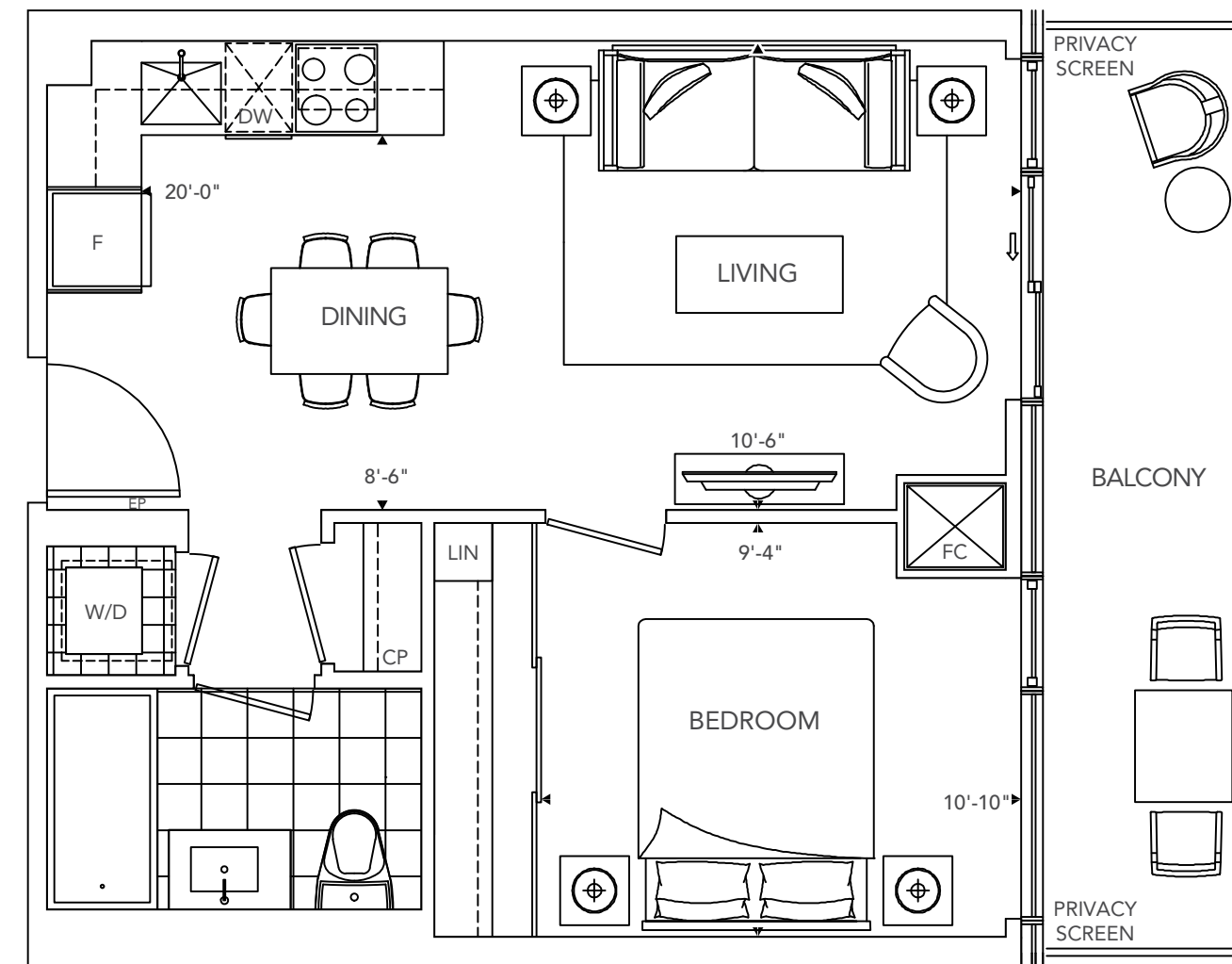
All dimensions are approximate and subject to normal construction variances. Dimensions may exceed the useable floor area. Sizes and specifications subject to change without notice. Furniture is displayed for illustration purposes only and does not necessarily reflect the electrical plan for the suite. Suites are sold unfurnished. E.&O.E. Tridel®, Tridel Built for Life® and Tridel Built Green. Built for Life® are registered trademarks of Tridel and used under license. ©Tridel 2015. All rights reserved. October 2015.

1A

1 Bedroom

40-42

FACING LESLIE

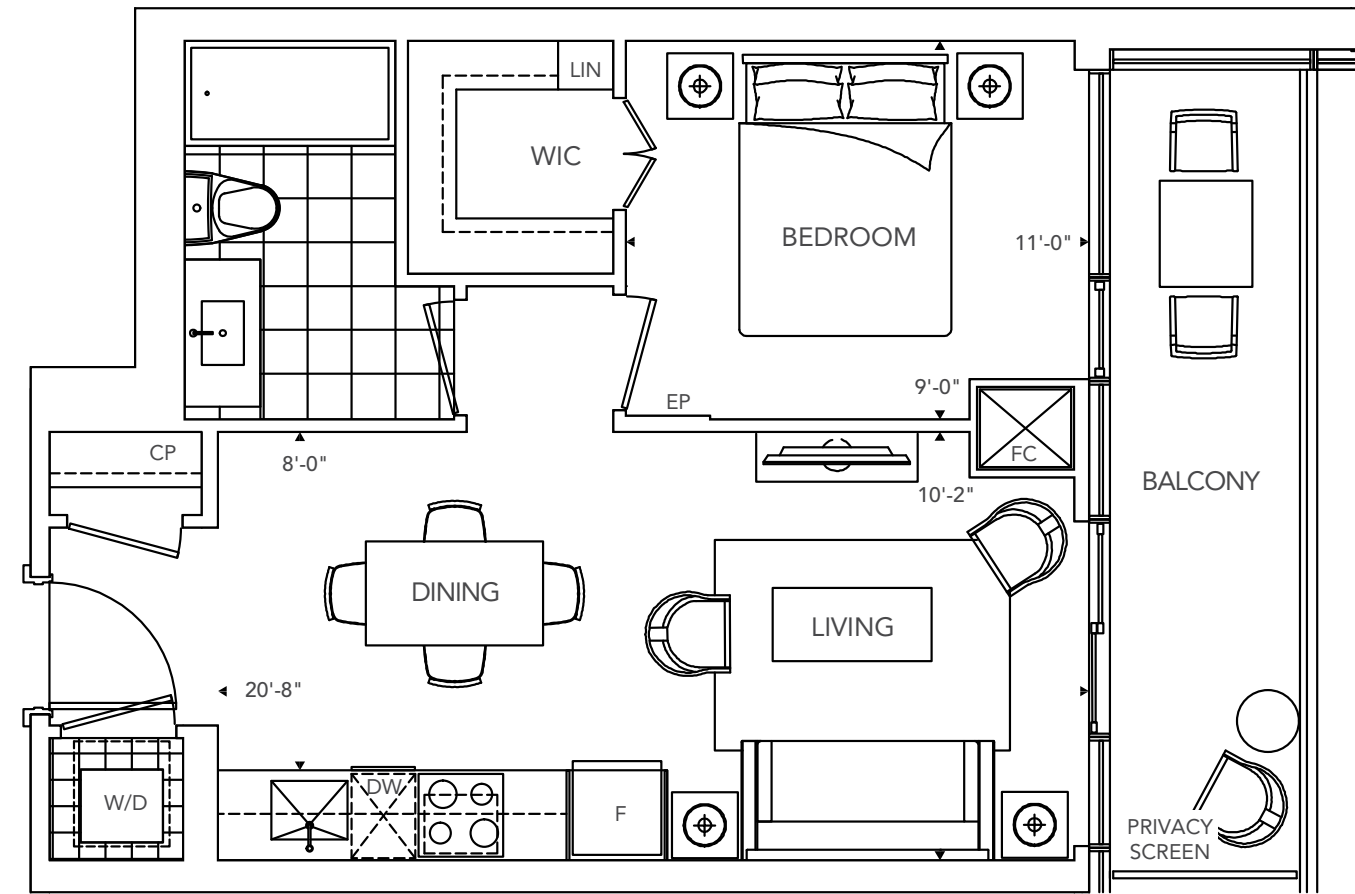


All dimensions are approximate and subject to normal construction variances. Dimensions may exceed the useable floor area. Sizes and specifications subject to change without notice. Furniture is displayed for illustration purposes only and does not necessarily reflect the electrical plan for the suite. Suites are sold unfurnished. E.&O.E. Tridel®, Tridel Built for Life® and Tridel Built Green. Built for Life® are registered trademarks of Tridel and used under license. ©Tridel 2015. All rights reserved. October 2015.

1B

1 Bedroom

02



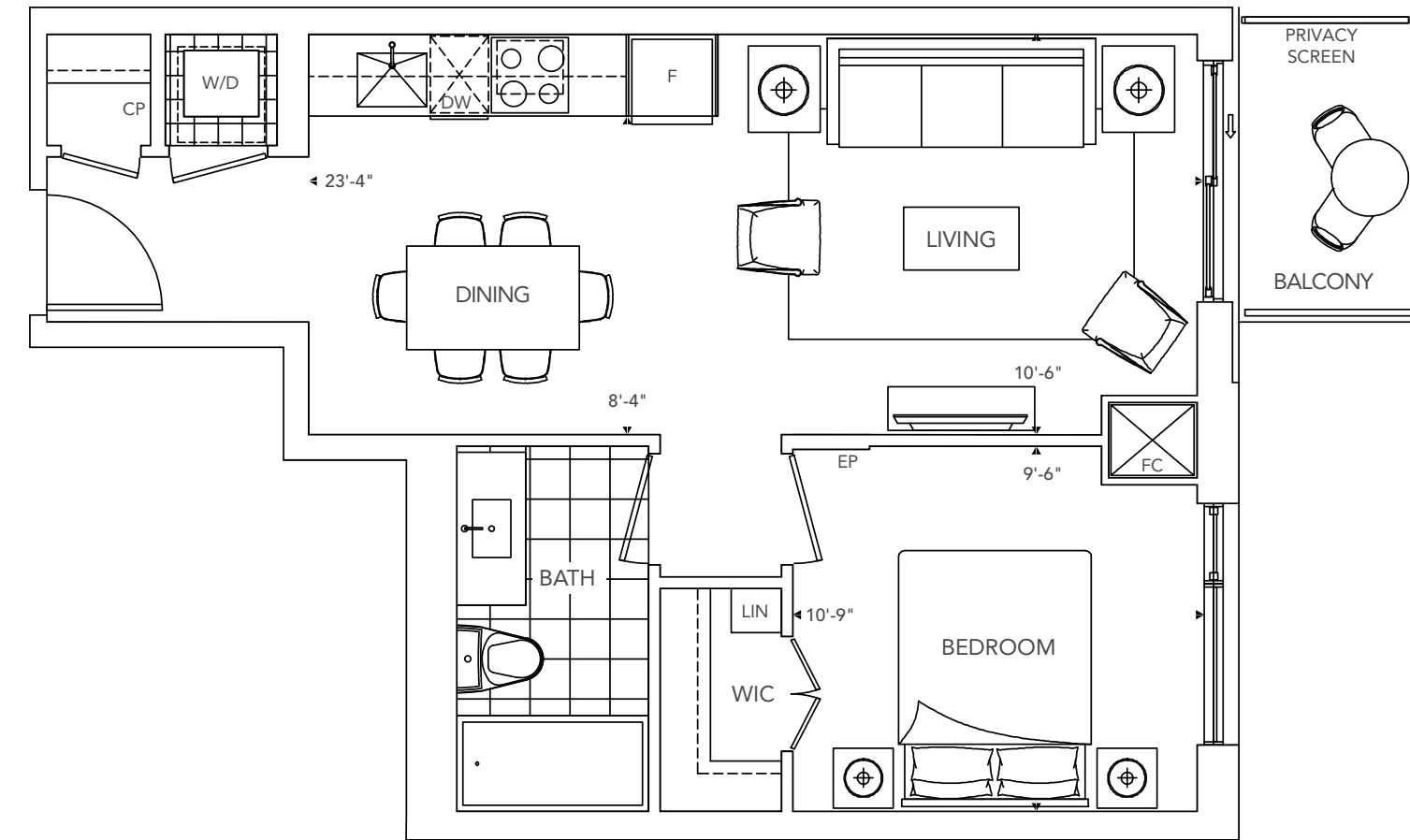
All dimensions are approximate and subject to normal construction variances. Dimensions may exceed the useable floor area. Sizes and specifications subject to change without notice. Furniture is displayed for illustration purposes only and does not necessarily reflect the electrical plan for the suite. Suites are sold unfurnished. E.&O.E. Tridel®, Tridel Built for Life® and Tridel Built Green. Built for Life® are registered trademarks of Tridel and used under license. ©Tridel 2015. All rights reserved. October 2015.



1C

1 Bedroom

47



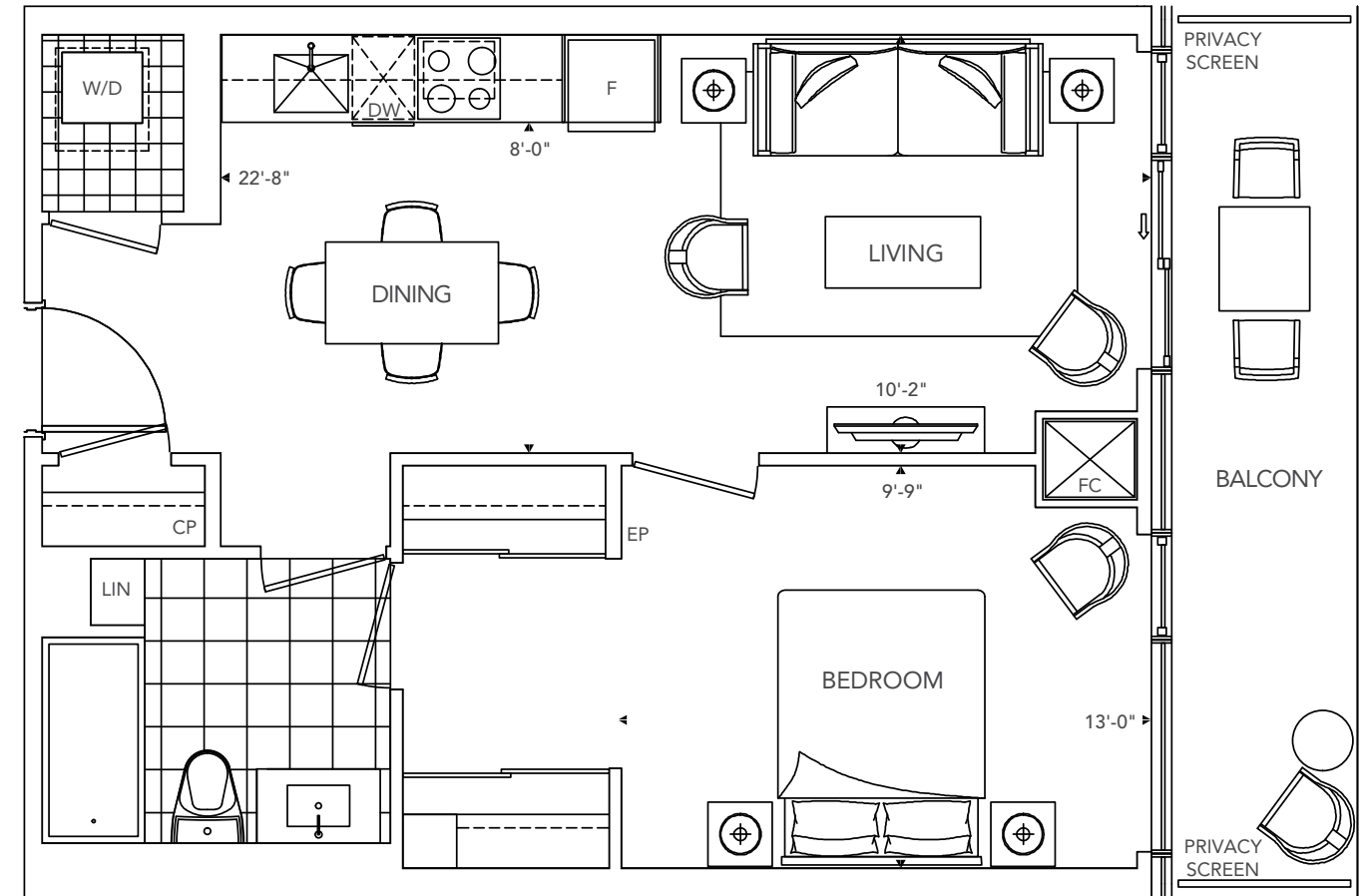
All dimensions are approximate and subject to normal construction variances. Dimensions may exceed the useable floor area. Sizes and specifications subject to change without notice. Furniture is displayed for illustration purposes only and does not necessarily reflect the electrical plan for the suite. Suites are sold unfurnished. E.&O.E. Tridel®, Tridel Built for Life® and Tridel Built Green. Built for Life® are registered trademarks of Tridel and used under license. ©Tridel 2015. All rights reserved. October 2015.



1G

1 Bedroom

37 - 39



All dimensions are approximate and subject to normal construction variances. Dimensions may exceed the useable floor area. Sizes and specifications subject to change without notice. Furniture is displayed for illustration purposes only and does not necessarily reflect the electrical plan for the suite. Suites are sold unfurnished. E.&O.E. Tridel®, Tridel Built for Life® and Tridel Built Green. Built for Life® are registered trademarks of Tridel and used under license. ©Tridel 2015. All rights reserved. October 2015.

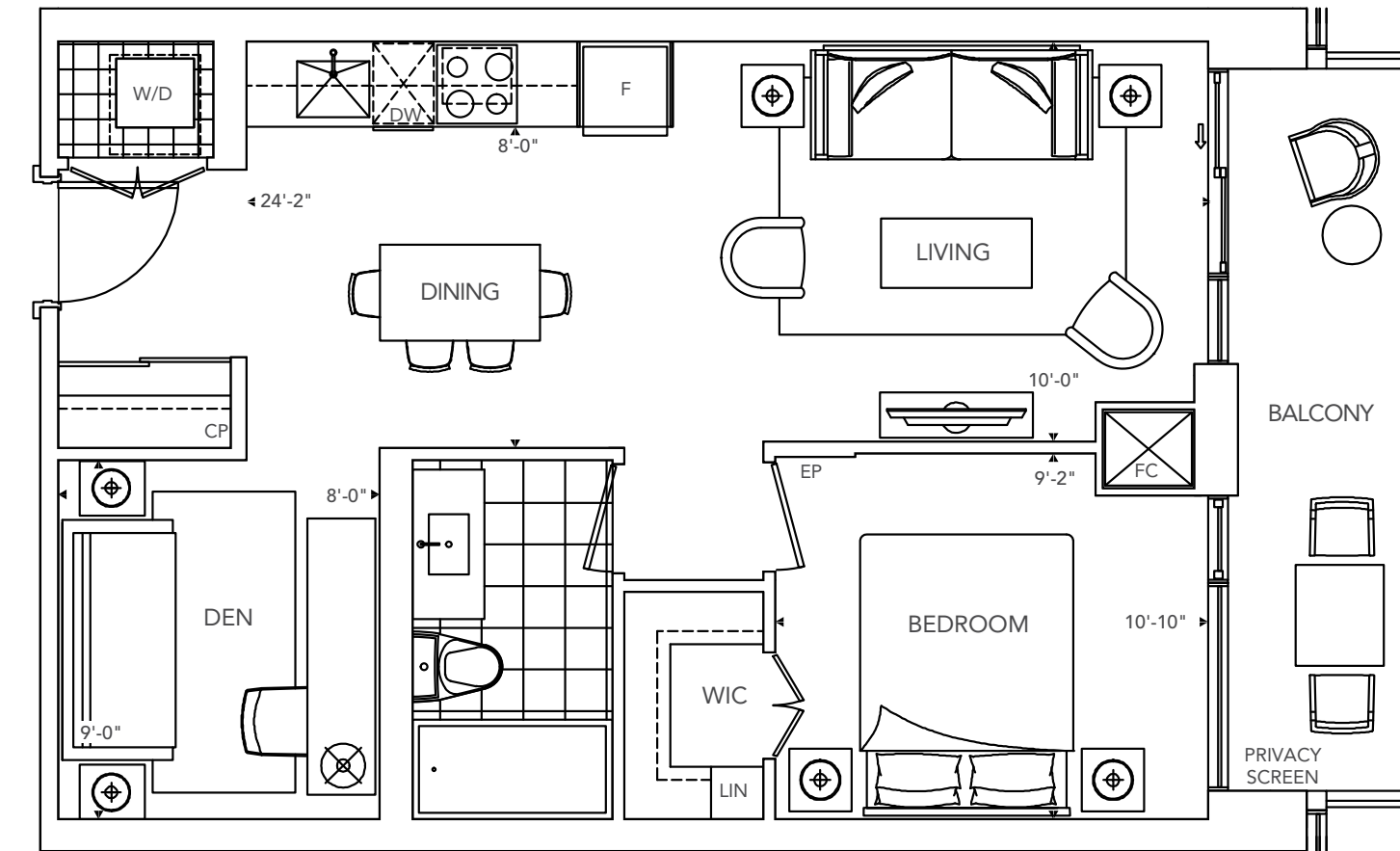
FACING LESLIE



1K+D

1 Bedroom + Den

04.12



All dimensions are approximate and subject to normal construction variances. Dimensions may exceed the useable floor area. Sizes and specifications subject to change without notice. Furniture is displayed for illustration purposes only and does not necessarily reflect the electrical plan for the suite. Suites are sold unfurnished. E.&O.E. Tridel®, Tridel Built for Life® and Tridel Built Green. Built for Life® are registered trademarks of Tridel and used under license. ©Tridel 2015. All rights reserved. October 2015.

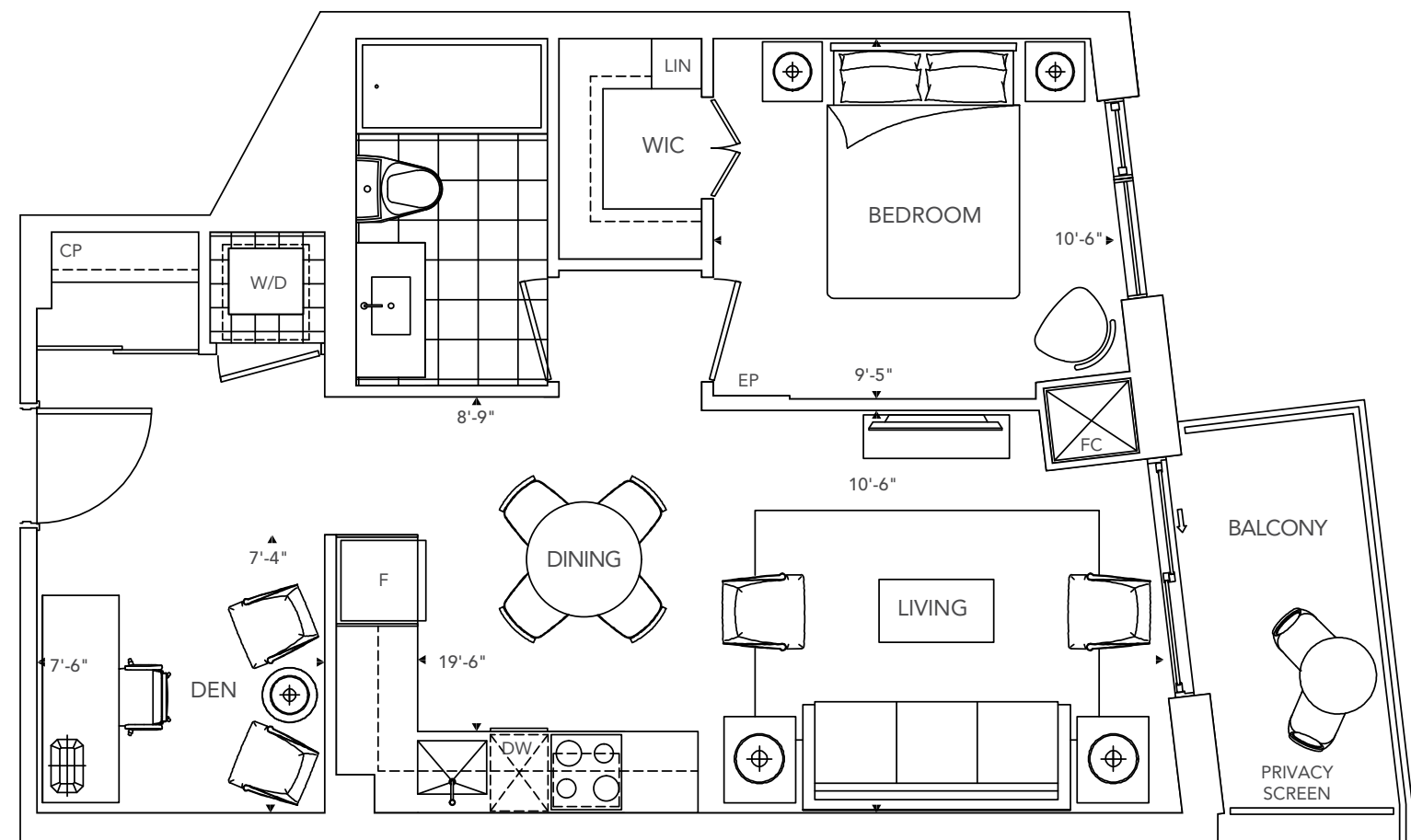
FACING NORTH



1J+D

1 Bedroom + Den

18



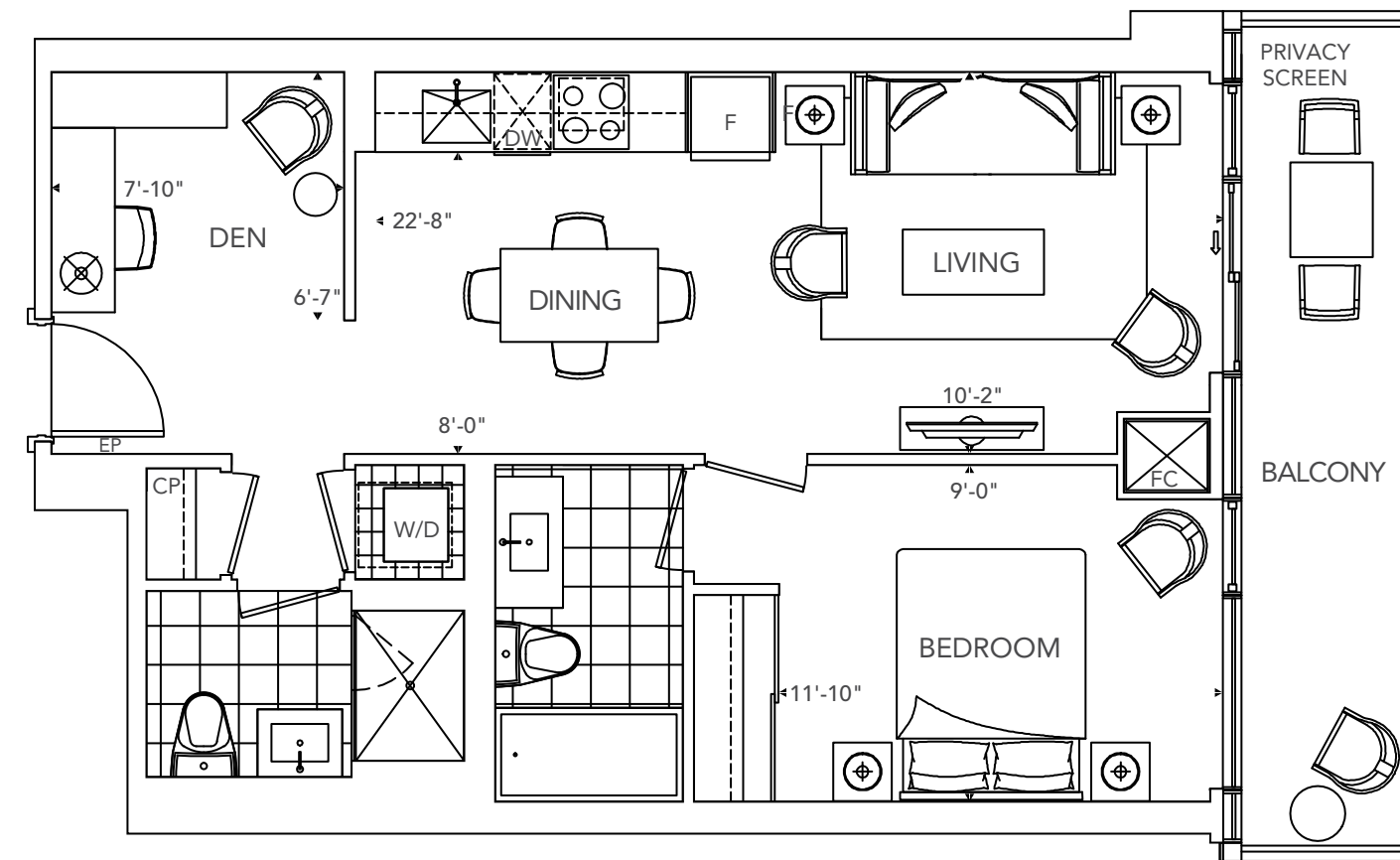
All dimensions are approximate and subject to normal construction variances. Dimensions may exceed the useable floor area. Sizes and specifications subject to change without notice. Furniture is displayed for illustration purposes only and does not necessarily reflect the electrical plan for the suite. Suites are sold unfurnished. E.&O.E. Tridel®, Tridel Built for Life® and Tridel Built Green. Built for Life® are registered trademarks of Tridel and used under license. ©Tridel 2015. All rights reserved. October 2015.



1N+D

1 Bedroom + Den

03, 07, 11



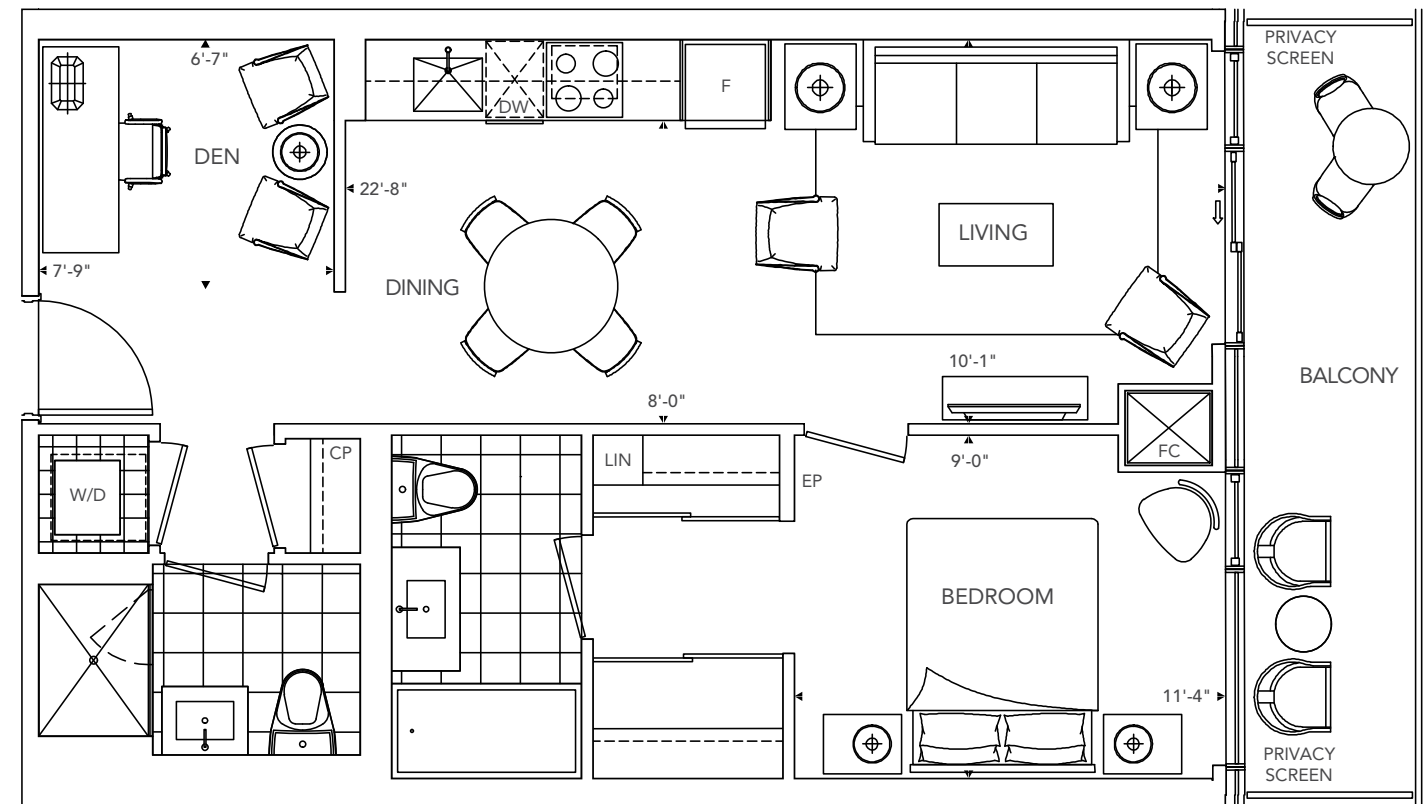
All dimensions are approximate and subject to normal construction variances. Dimensions may exceed the useable floor area. Sizes and specifications subject to change without notice. Furniture is displayed for illustration purposes only and does not necessarily reflect the electrical plan for the suite. Suites are sold unfurnished. E.&O.E. Tridel®, Tridel Built for Life® and Tridel Built Green. Built for Life® are registered trademarks of Tridel and used under license. ©Tridel 2015. All rights reserved. October 2015.



1P+D

1 Bedroom + Den

06, 08, 13-15



FACING NORTH

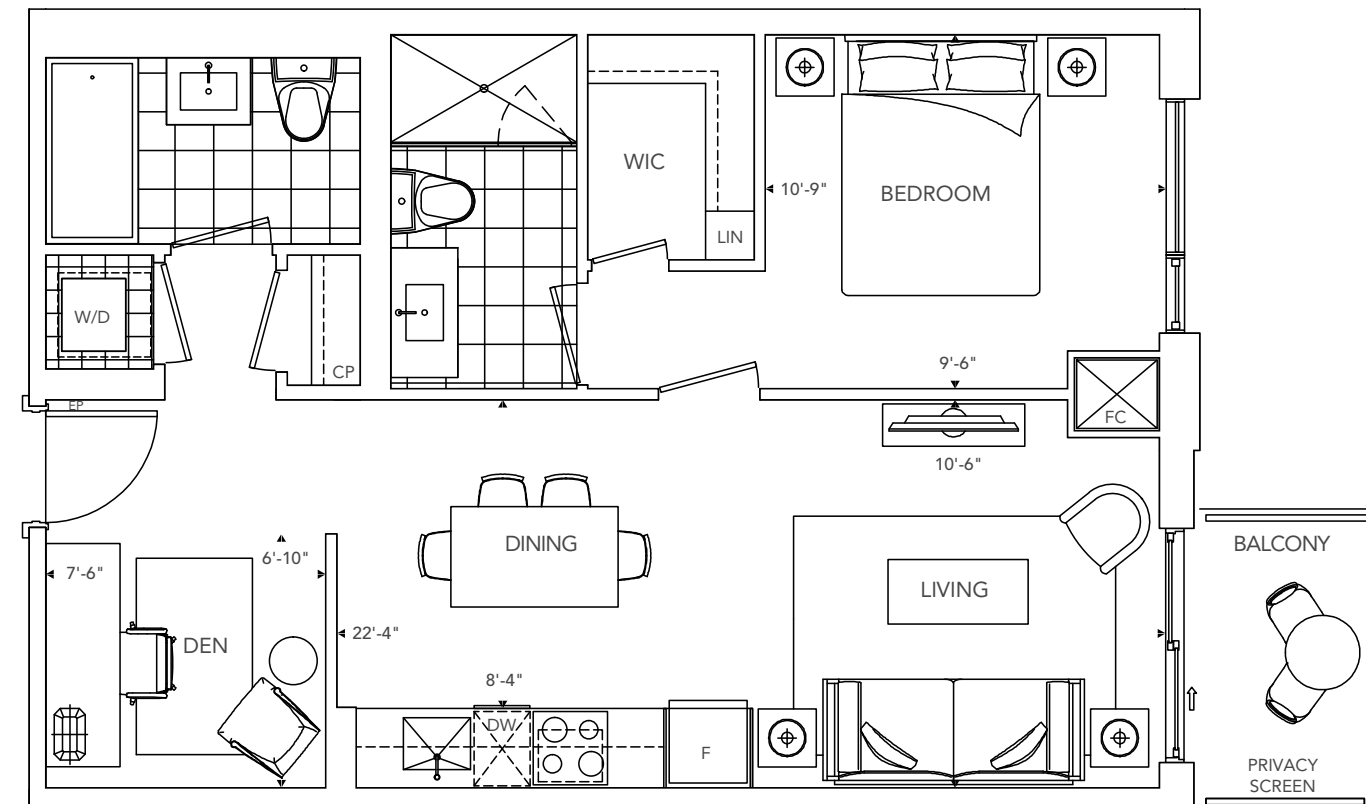


All dimensions are approximate and subject to normal construction variances. Dimensions may exceed the useable floor area. Sizes and specifications subject to change without notice. Furniture is displayed for illustration purposes only and does not necessarily reflect the electrical plan for the suite. Suites are sold unfurnished. E.&O.E. Tridel®, Tridel Built for Life® and Tridel Built Green. Built for Life® are registered trademarks of Tridel and used under license. ©Tridel 2015. All rights reserved. October 2015.

1Q+D

1 Bedroom + Den

12 - 17, 40 - 45, 48 - 51



FACING LESLIE



FACING NORTH

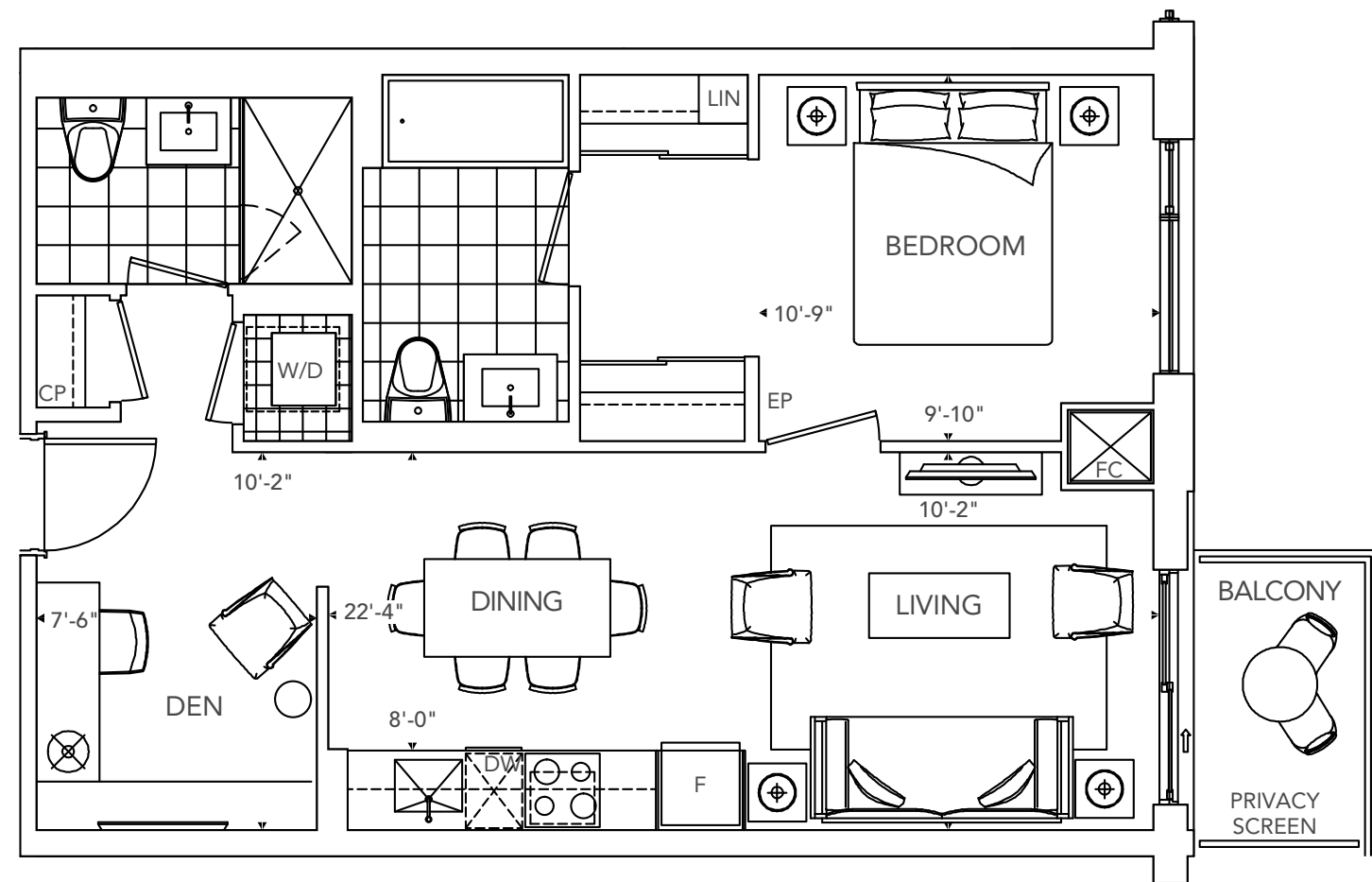


All dimensions are approximate and subject to normal construction variances. Dimensions may exceed the useable floor area. Sizes and specifications subject to change without notice. Furniture is displayed for illustration purposes only and does not necessarily reflect the electrical plan for the suite. Suites are sold unfurnished. E.&O.E. Tridel®, Tridel Built for Life® and Tridel Built Green. Built for Life® are registered trademarks of Tridel and used under license. ©Tridel 2015. All rights reserved. October 2015.

1Q+DA

1 Bedroom + Den

52



FACING NORTH

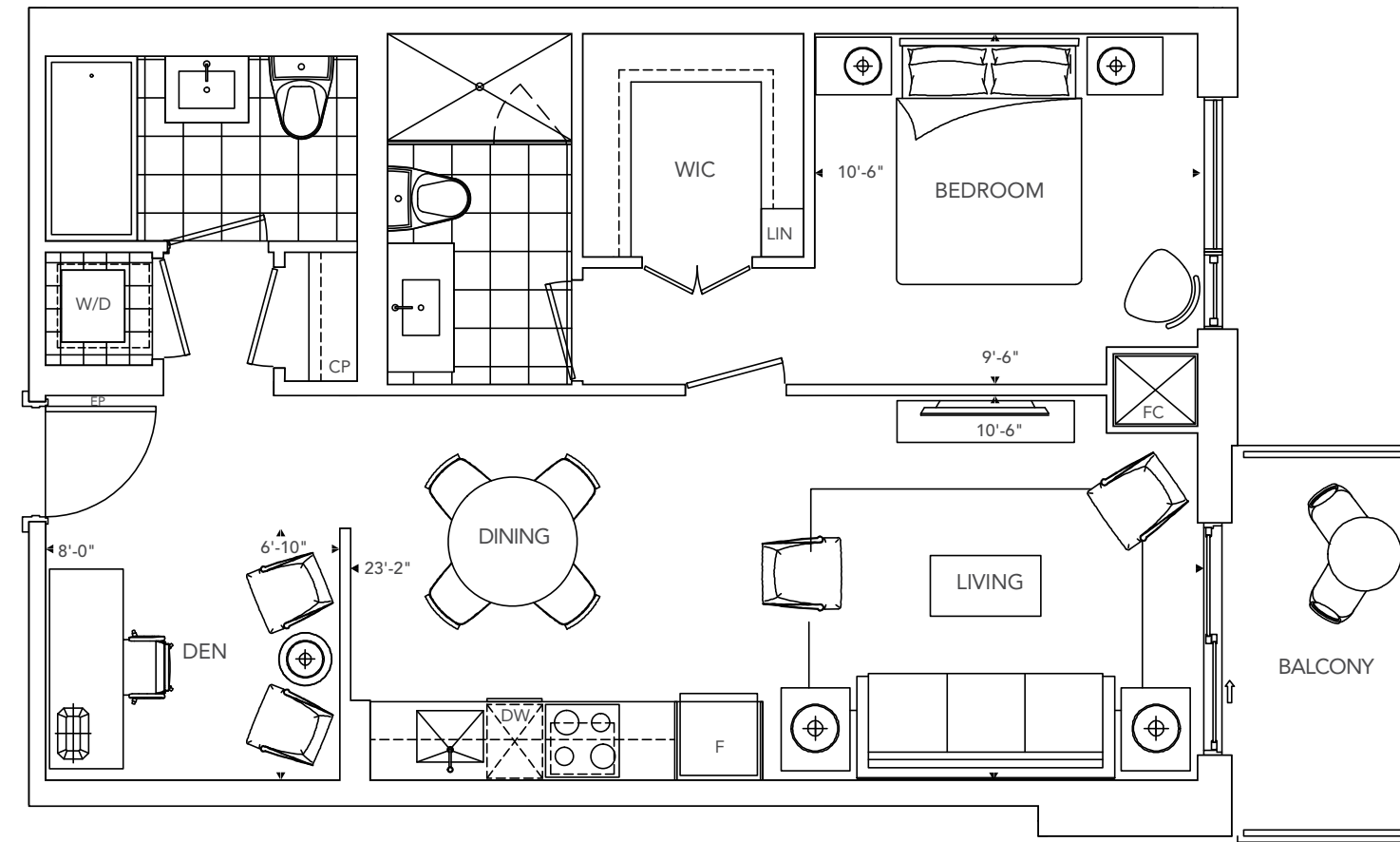


All dimensions are approximate and subject to normal construction variances. Dimensions may exceed the useable floor area. Sizes and specifications subject to change without notice. Furniture is displayed for illustration purposes only and does not necessarily reflect the electrical plan for the suite. Suites are sold unfurnished. E.&O.E. Tridel®, Tridel Built for Life® and Tridel Built Green. Built for Life® are registered trademarks of Tridel and used under license. ©Tridel 2015. All rights reserved. October 2015.

1T+D

1 Bedroom + Den

38, 39



FACING LESLIE

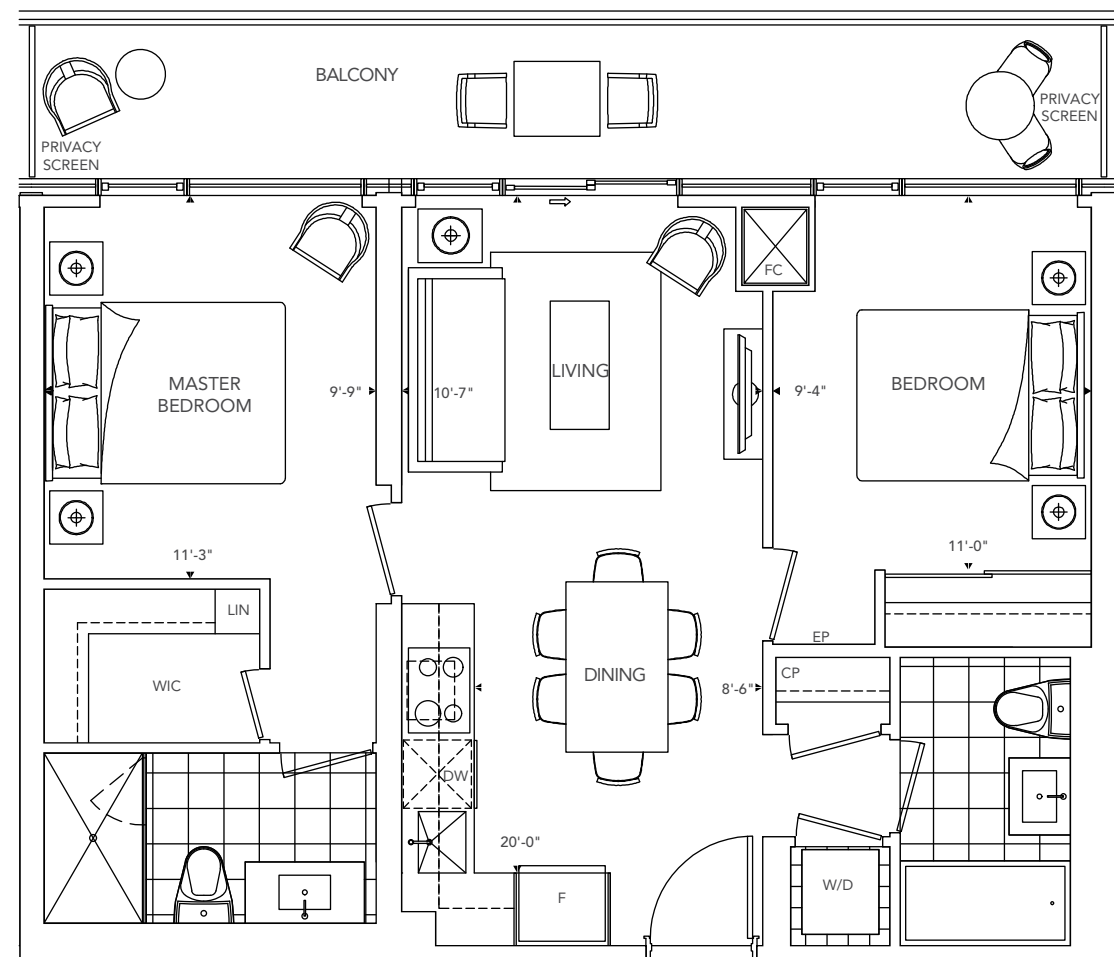


All dimensions are approximate and subject to normal construction variances. Dimensions may exceed the useable floor area. Sizes and specifications subject to change without notice. Furniture is displayed for illustration purposes only and does not necessarily reflect the electrical plan for the suite. Suites are sold unfurnished. E.&O.E. Tridel®, Tridel Built for Life® and Tridel Built Green. Built for Life® are registered trademarks of Tridel and used under license. ©Tridel 2015. All rights reserved. October 2015.

2B

2 Bedroom

40 - 43



All dimensions are approximate and subject to normal construction variances. Dimensions may exceed the useable floor area. Sizes and specifications subject to change without notice. Furniture is displayed for illustration purposes only and does not necessarily reflect the electrical plan for the suite. Suites are sold unfurnished. E.&O.E. Tridel®, Tridel Built for Life® and Tridel Built Green. Built for Life® are registered trademarks of Tridel and used under license. ©Tridel 2015. All rights reserved. October 2015.

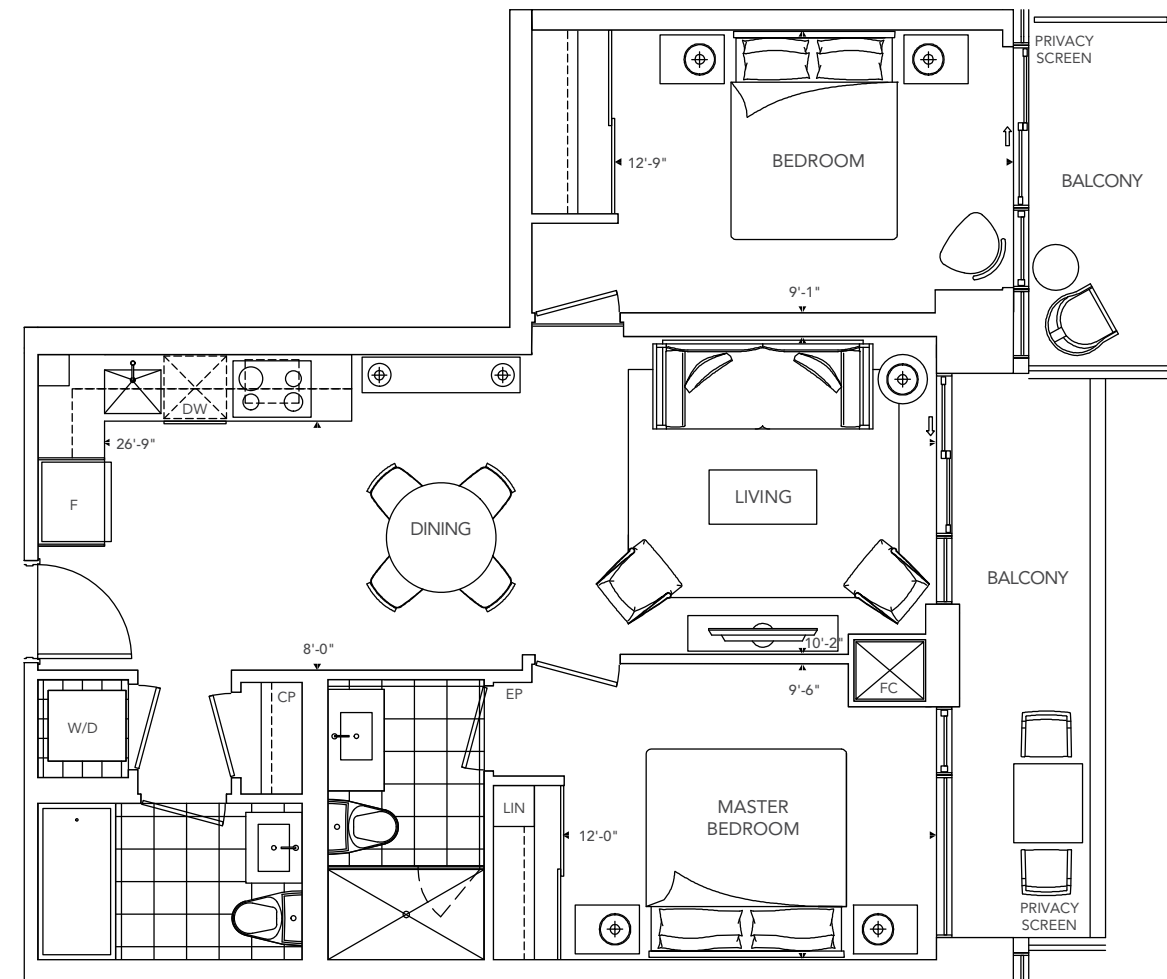
FACING LESLIE



2D

2 Bedroom

09



All dimensions are approximate and subject to normal construction variances. Dimensions may exceed the useable floor area. Sizes and specifications subject to change without notice. Furniture is displayed for illustration purposes only and does not necessarily reflect the electrical plan for the suite. Suites are sold unfurnished. E.&O.E. Tridel®, Tridel Built for Life® and Tridel Built Green. Built for Life® are registered trademarks of Tridel and used under license. ©Tridel 2015. All rights reserved. October 2015.

FACING NORTH

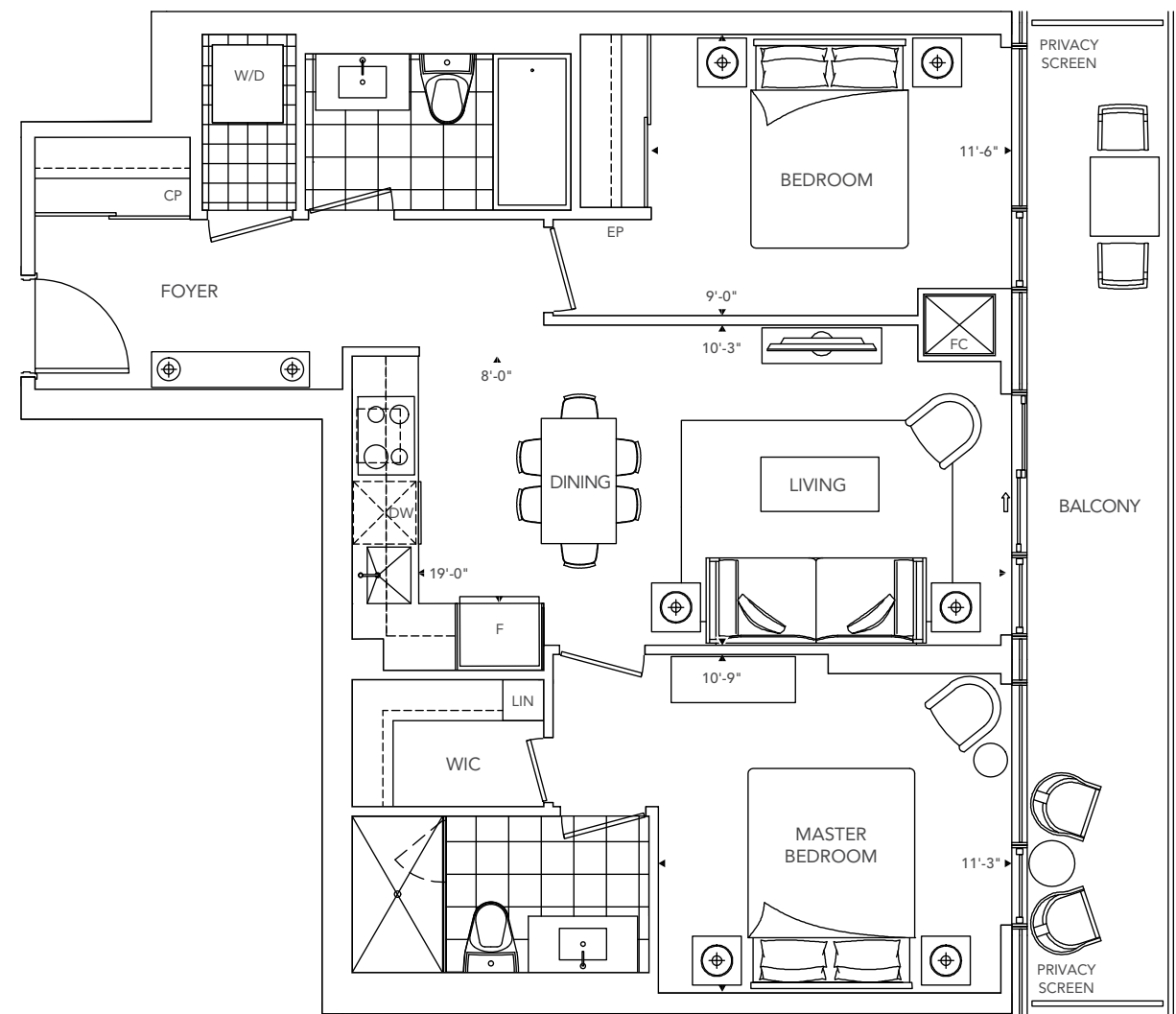


2F

2 Bedroom

10

FACING NORTH



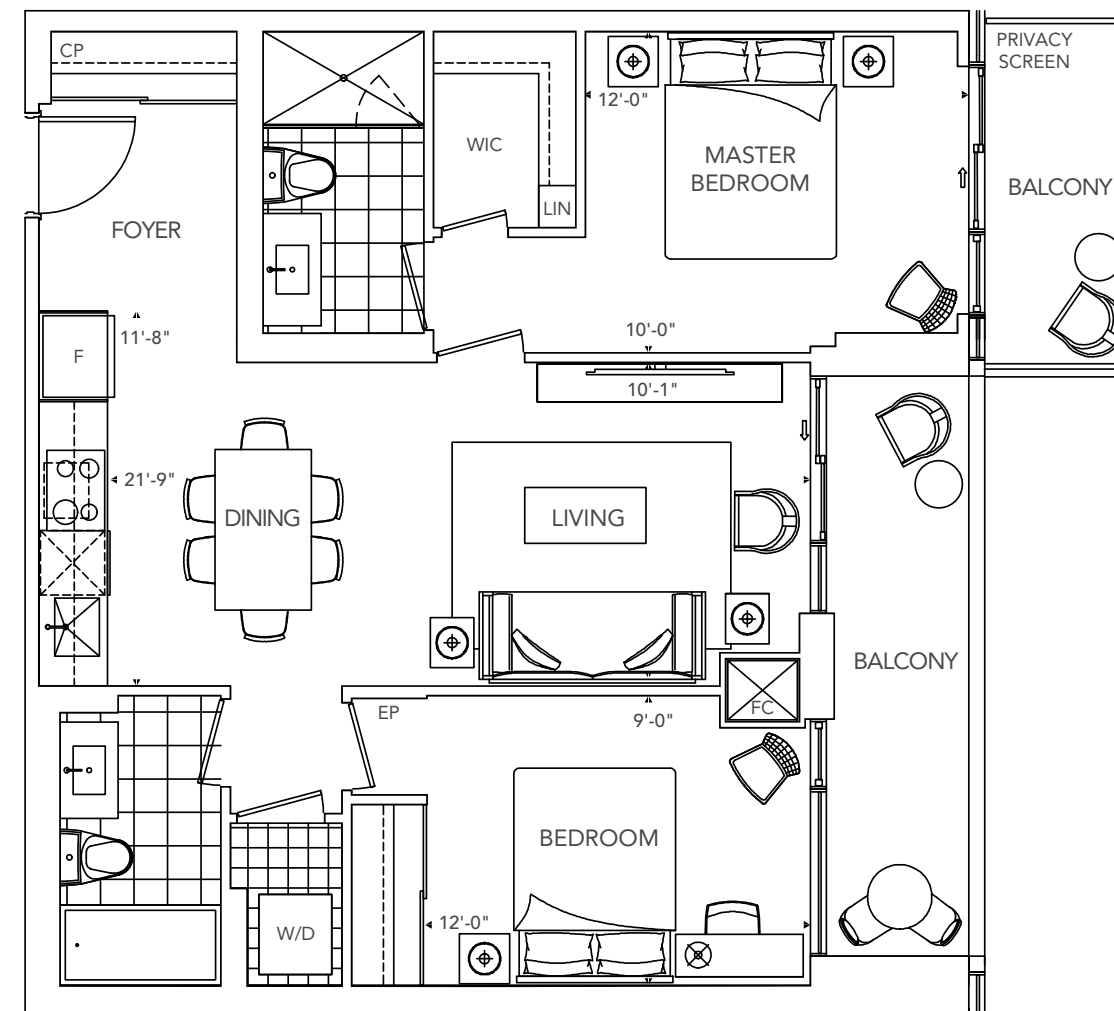
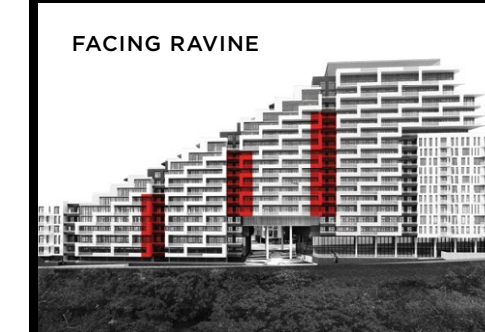
All dimensions are approximate and subject to normal construction variances. Dimensions may exceed the useable floor area. Sizes and specifications subject to change without notice. Furniture is displayed for illustration purposes only and does not necessarily reflect the electrical plan for the suite. Suites are sold unfurnished. E.&O.E. Tridel®, Tridel Built for Life® and Tridel Built Green. Built for Life® are registered trademarks of Tridel and used under license. ©Tridel 2015. All rights reserved. October 2015.

2G

2 Bedroom

24, 27, 30

FACING RAVINE

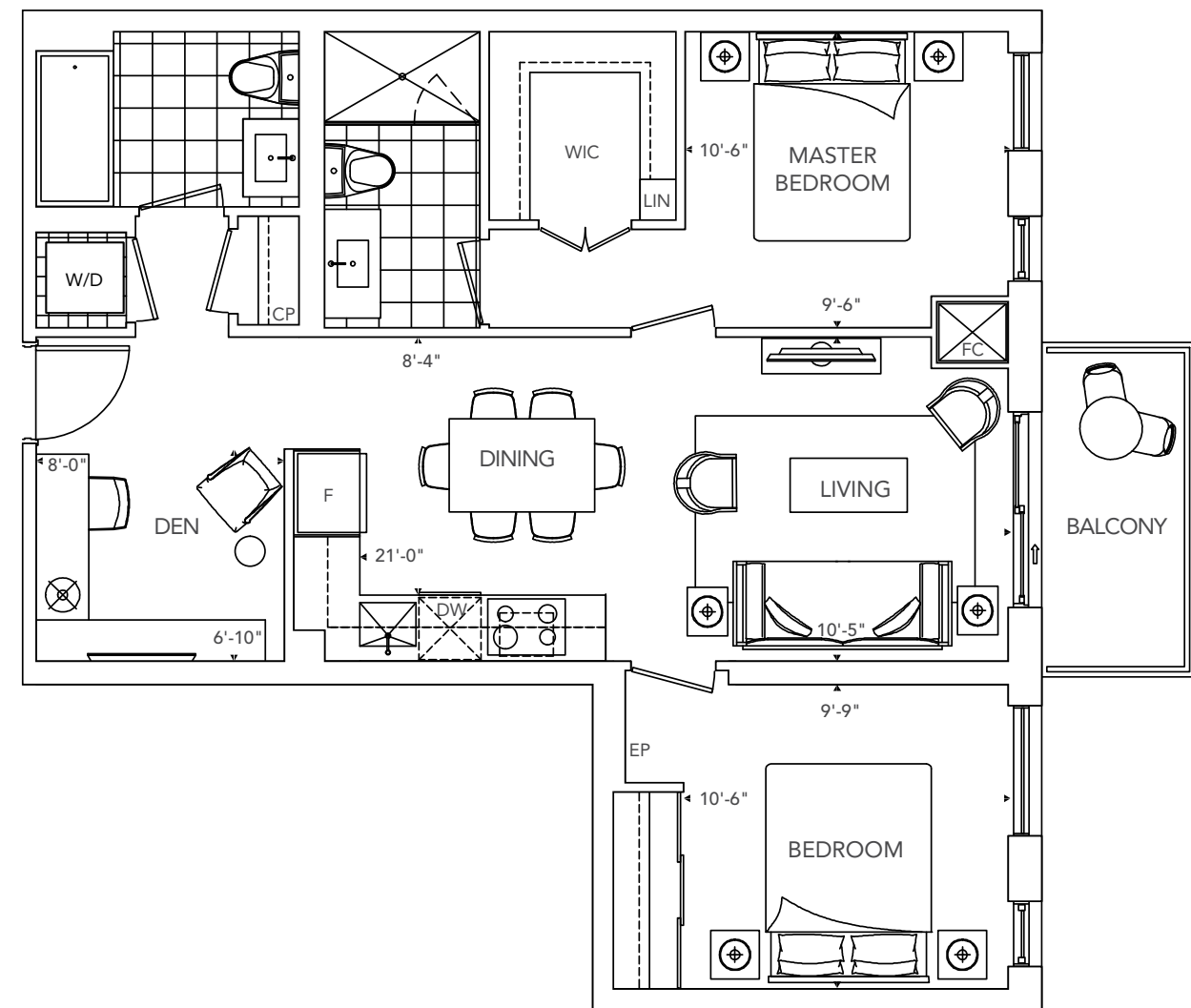


All dimensions are approximate and subject to normal construction variances. Dimensions may exceed the useable floor area. Sizes and specifications subject to change without notice. Furniture is displayed for illustration purposes only and does not necessarily reflect the electrical plan for the suite. Suites are sold unfurnished. E.&O.E. Tridel®, Tridel Built for Life® and Tridel Built Green. Built for Life® are registered trademarks of Tridel and used under license. ©Tridel 2015. All rights reserved. October 2015.

2J+D

2 Bedroom + Den

36



All dimensions are approximate and subject to normal construction variances. Dimensions may exceed the useable floor area. Sizes and specifications subject to change without notice. Furniture is displayed for illustration purposes only and does not necessarily reflect the electrical plan for the suite. Suites are sold unfurnished. E.&O.E. Tridel®, Tridel Built for Life® and Tridel Built Green. Built for Life® are registered trademarks of Tridel and used under license. ©Tridel 2015. All rights reserved. October 2015.

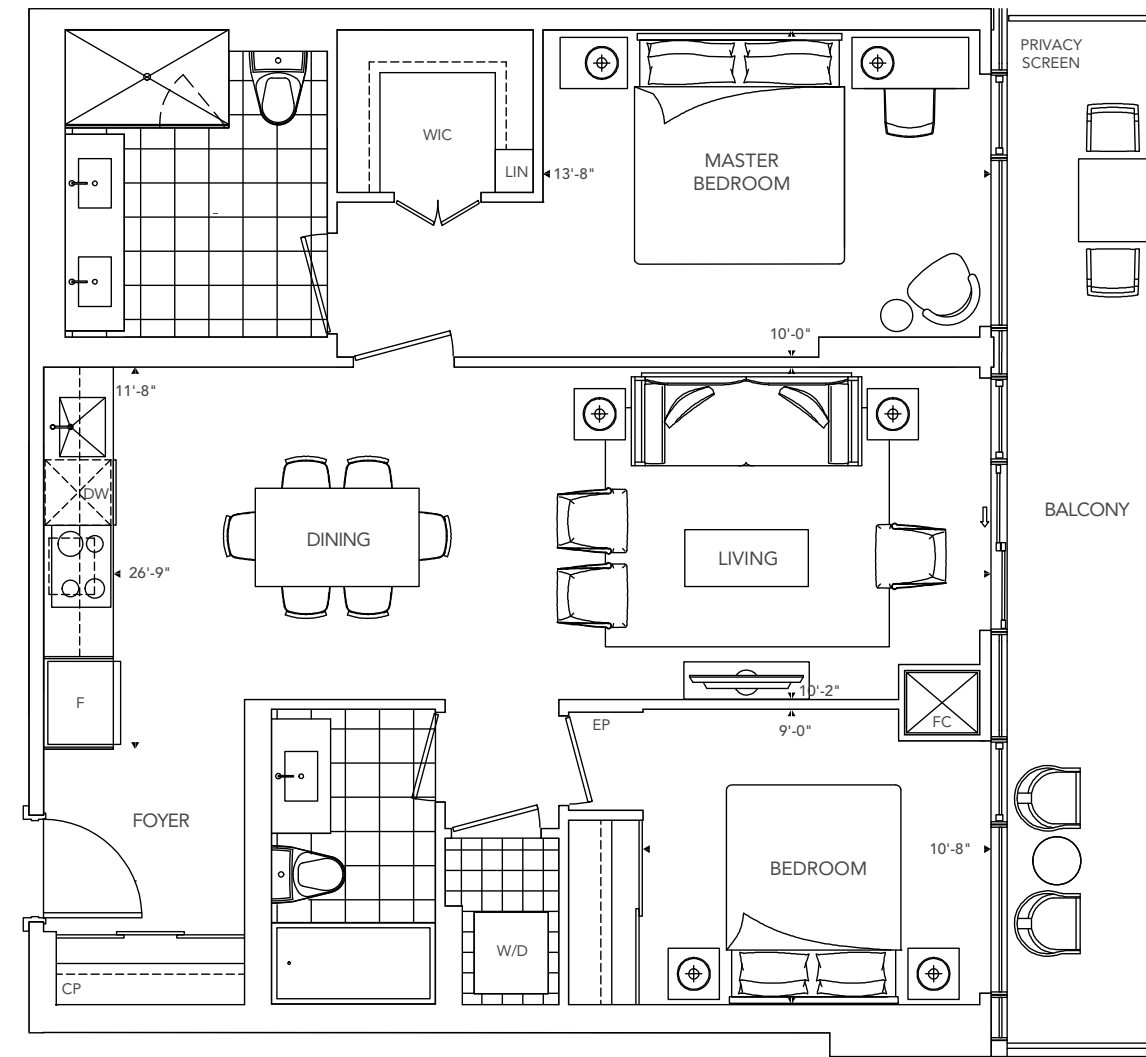
FACING LESLIE



2K

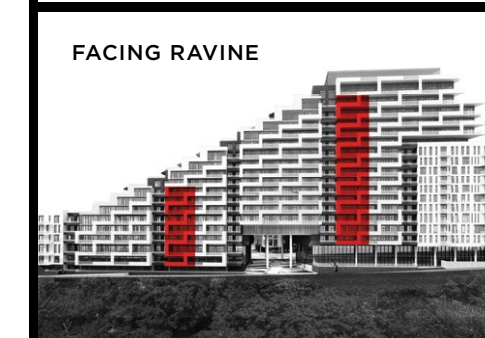
2 Bedroom

25, 31



All dimensions are approximate and subject to normal construction variances. Dimensions may exceed the useable floor area. Sizes and specifications subject to change without notice. Furniture is displayed for illustration purposes only and does not necessarily reflect the electrical plan for the suite. Suites are sold unfurnished. E.&O.E. Tridel®, Tridel Built for Life® and Tridel Built Green. Built for Life® are registered trademarks of Tridel and used under license. ©Tridel 2015. All rights reserved. October 2015.

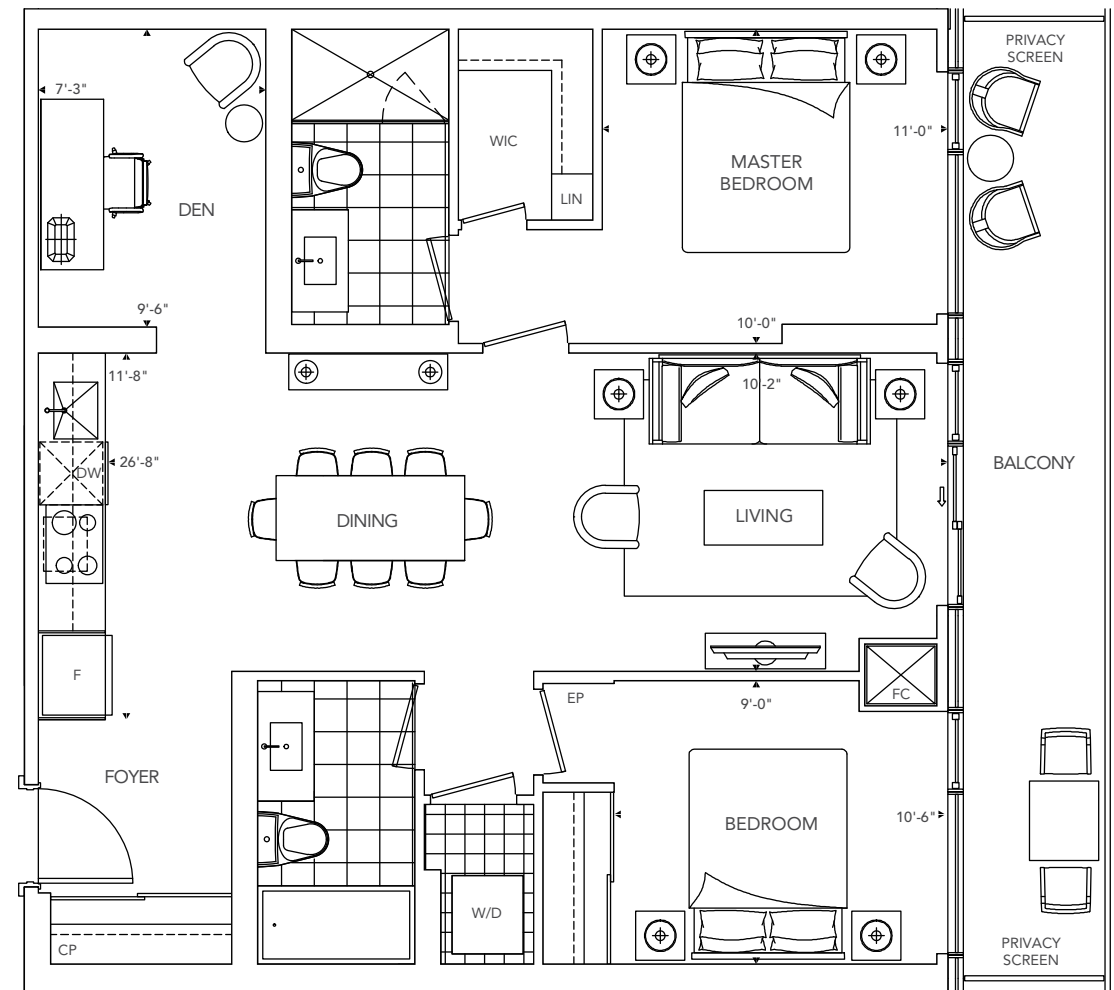
FACING RAVINE



2K+D

2 Bedroom + Den

22, 23, 26, 28, 29, 32



All dimensions are approximate and subject to normal construction variances. Dimensions may exceed the useable floor area. Sizes and specifications subject to change without notice. Furniture is displayed for illustration purposes only and does not necessarily reflect the electrical plan for the suite. Suites are sold unfurnished. E.&O.E. Tridel®, Tridel Built for Life® and Tridel Built Green. Built for Life® are registered trademarks of Tridel and used under license. ©Tridel 2015. All rights reserved. October 2015.

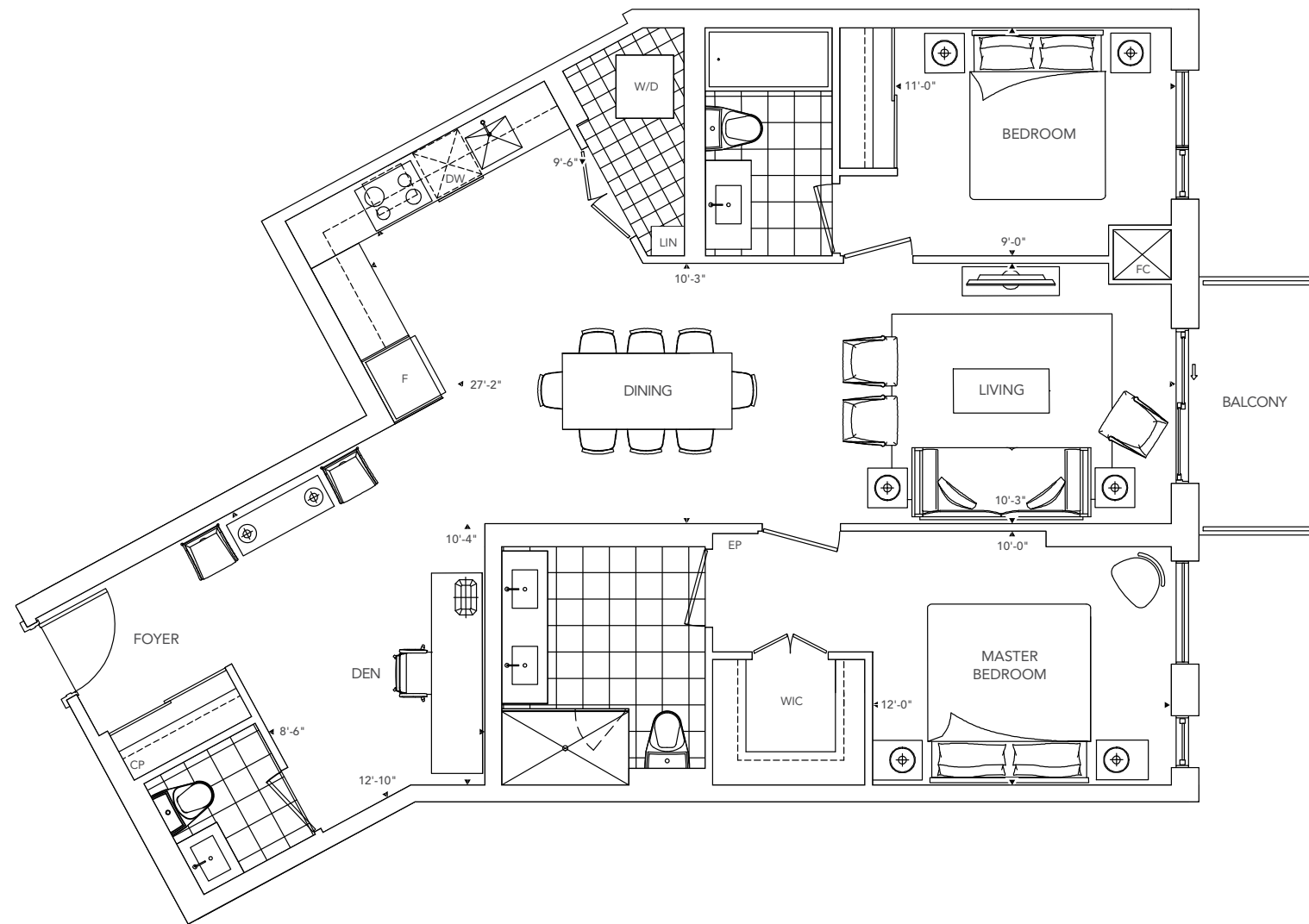
FACING RAVINE



2Q+D

2 Bedroom + Den

34



All dimensions are approximate and subject to normal construction variances. Dimensions may exceed the useable floor area. Sizes and specifications subject to change without notice. Furniture is displayed for illustration purposes only and does not necessarily reflect the electrical plan for the suite. Suites are sold unfurnished. E.&O.E. Tridel®, Tridel Built for Life® and Tridel Built Green. Built for Life® are registered trademarks of Tridel and used under license. ©Tridel 2015. All rights reserved. October 2015.

FACING RAVINE





Quality starts with an intention.

To do our best.

We know that nothing is more personal than your home.

*It is fitting then that our team of people put their skills and dedication to work each day
for the good of our homeowners, their families and the communities that we share.*

Our experience and size benefits our customers at every stage.

*It begins with our ability to locate the best locations, source superior materials,
have brand name suppliers and work with award winning consultants.*

*And it continues through to our long history of effectively managing condominium construction,
and it ends with you knowing that you have the best home for the best value.*



FEATURES & FINISHES

SCALA COLLECTION

FLOOR COVERINGS

- Premium plank laminate floating floor with acoustic underlay to all rooms excluding bathroom(s) and laundry.
- Designer selected premium porcelain floor tiles in bathroom(s).

KITCHEN

- Kitchen cabinetry** coordinated with backsplash** and countertop**. Kitchen includes full height flat panel doors. Finishes include designer hardware and wood grain laminate.
- Granite** or quartz** kitchen countertop with polished single square edge and undermount square single basin stainless steel sink.
- Granite backsplash**.
- 1 bedroom and 1 bedroom plus den suites will feature appliances with:
 - Energy efficient 18" panel ready dishwasher.
 - Counter depth energy efficient stainless steel 24" refrigerator with bottom mount freezer.
 - 30" Stainless steel over the range microwave / hood combo.
 - 24" built in oven in stainless steel finish.
 - 24" built in glass ceramic cook top.
 - Energy saving undercabinet lighting.
- 2 bedroom and 2 bedroom plus den suites will feature appliances with:
 - Energy efficient 24" panel ready dishwasher.
 - Counter depth energy efficient stainless steel 30" refrigerator with bottom mount freezer.
 - 30" Stainless steel microwave / hood combo.
 - 30" built in oven in stainless steel finish.
 - 30" built in glass ceramic cook top.
 - Energy saving undercabinet lighting.

BATHROOMS

- 5' soaker tub with polished chrome faucet*.
- Porcelain tiles** in tub* and shower* enclosure.
- Acrylic shower base with frameless glass shower enclosure* with chrome hardware.

LAUNDRY

- 24" wide stacked front loading dryer and 24" wide Energy Star high efficiency front loading washer (complete with stainless steel braided hose connections). Stacked laundry appliances are white in colour. 2 bedroom and 2 bedroom plus den suites will receive 27" laundry appliances.

COMMUNICATIONS

- Fiber optic cabling to each suite (complete with in-suite junction box with optical media converter).
- Coaxial cable and Category 5e twisted pair in-suite wiring to living room, den (if applicable) and bedroom(s).
- Bulk internet service: Hybrid Fibre 250 High-Speed internet service (including Rogers Advanced Wi-Fi modem) with download speed up to 250 Mbps and upload speed up to 20 Mbps, with unlimited usage. Note: speed may vary with internet traffic, server gateway/router, computer (quality, location in the suite, software and applications installed, suite wiring, home network and/or others factors). Cost of this service is included in the condominium's maintenance budget.

* denotes availability determined by suite design.
 ** denotes finishes to be selected from the vendor's samples.

All features and finishes subject to change without notice. Illustrations are artist's concept only. Building and view not to scale. Tridel®, Tridel Built for Life®, Tridel Built Green, Built for Life.® are registered trademarks of Tridel and used under license. ©Tridel 2015. All rights reserved. E.&O.E. October 2015.

