



## *Signature Terrace Collection*

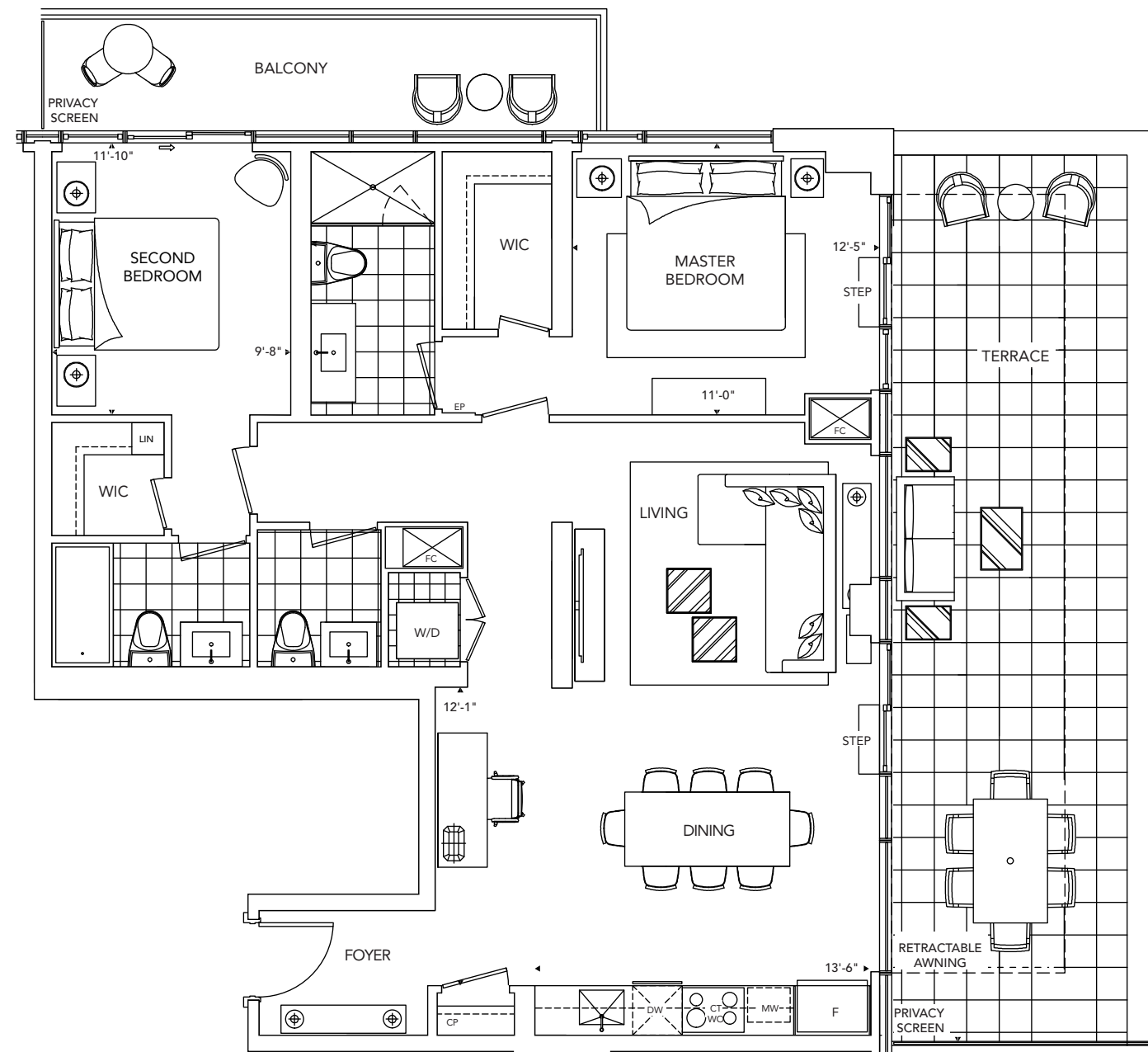
COMMANDING VIEWS, UNFILTERED VISTAS, UNCOMPROMISED LIVING. THE SIGNATURE TERRACE COLLECTION OFFERS YOU A LIVING ENVIRONMENT THAT'S ONE WITH NATURE. EXPANSIVE TERRACE RETREATS EMBRACE THE OUTDOORS, PROVIDING YOU WITH A PRIVATE REFUGE AND PANORAMIC VIEWS OF BAYVIEW'S BEAUTY.



T3B

2 Bedroom

53



All dimensions are approximate and subject to normal construction variances. Dimensions may exceed the useable floor area. Sizes and specifications subject to change without notice. Furniture is displayed for illustration purposes only and does not necessarily reflect the electrical plan for the suite. Suites are sold unfurnished. E.&O.E. Tridel®, Tridel Built for Life® and Tridel Built Green. Built for Life® are registered trademarks of Tridel and used under license. ©Tridel 2015. All rights reserved. October 2015.

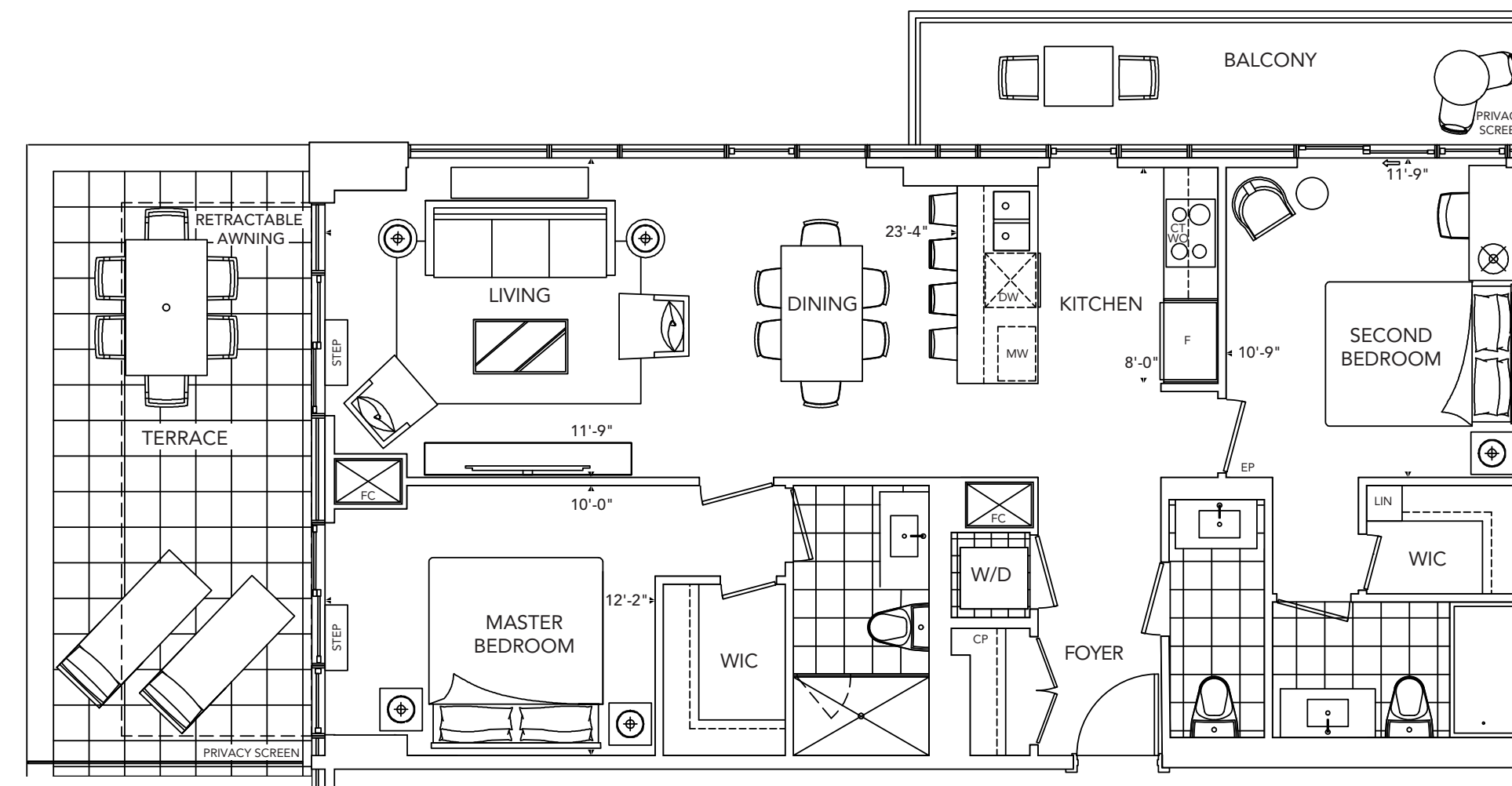
FACING NORTH



T4B

2 Bedroom

46



All dimensions are approximate and subject to normal construction variances. Dimensions may exceed the useable floor area. Sizes and specifications subject to change without notice. Furniture is displayed for illustration purposes only and does not necessarily reflect the electrical plan for the suite. Suites are sold unfurnished. E.&O.E. Tridel®, Tridel Built for Life® and Tridel Built Green. Built for Life® are registered trademarks of Tridel and used under license. ©Tridel 2015. All rights reserved. October 2015.

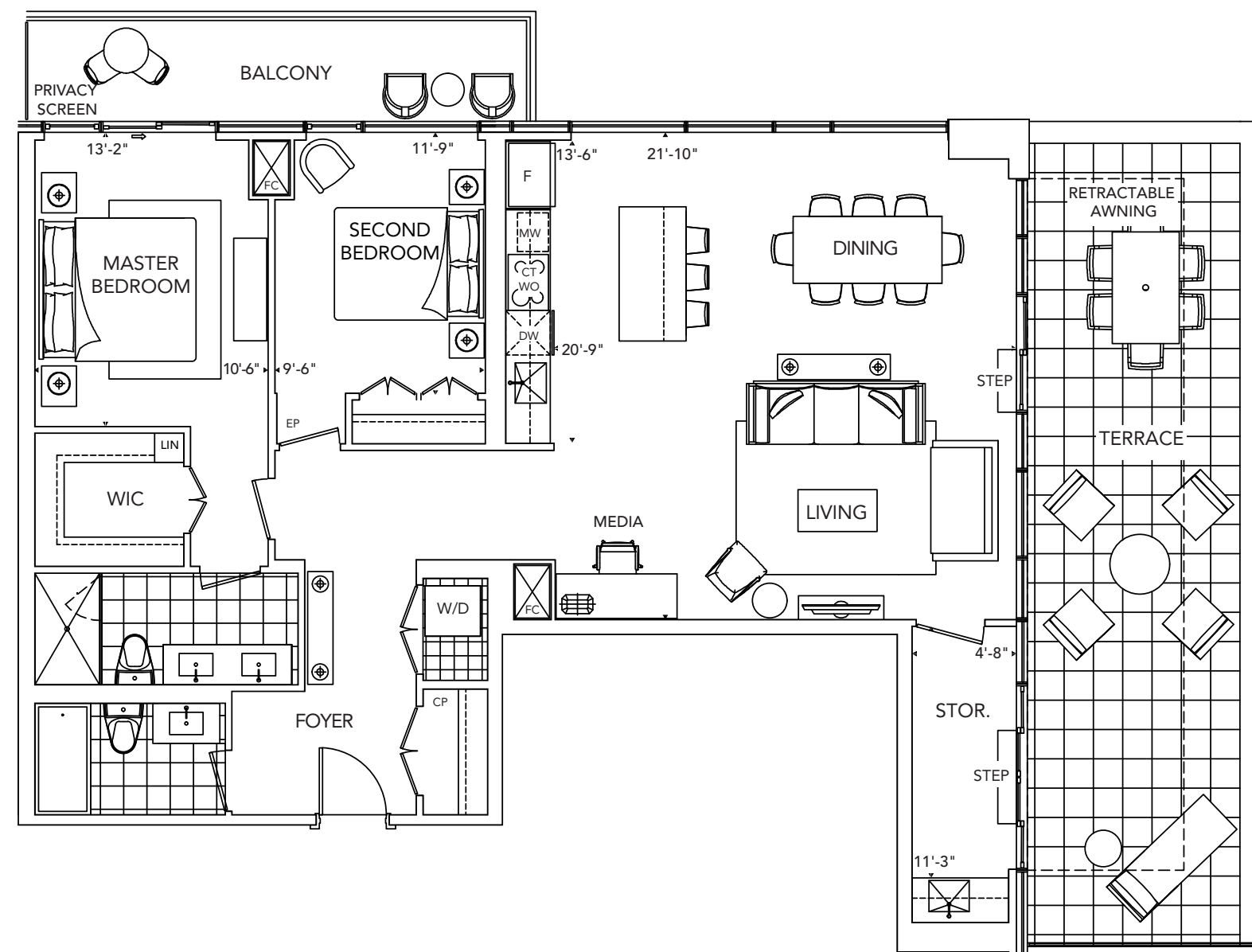
FACING LESLIE



T3C

2 Bedroom

53



All dimensions are approximate and subject to normal construction variances. Dimensions may exceed the useable floor area. Sizes and specifications subject to change without notice. Furniture is displayed for illustration purposes only and does not necessarily reflect the electrical plan for the suite. Suites are sold unfurnished. E.&O.E. Tridel®, Tridel Built for Life® and Tridel Built Green. Built for Life® are registered trademarks of Tridel and used under license. ©Tridel 2015. All rights reserved. October 2015.

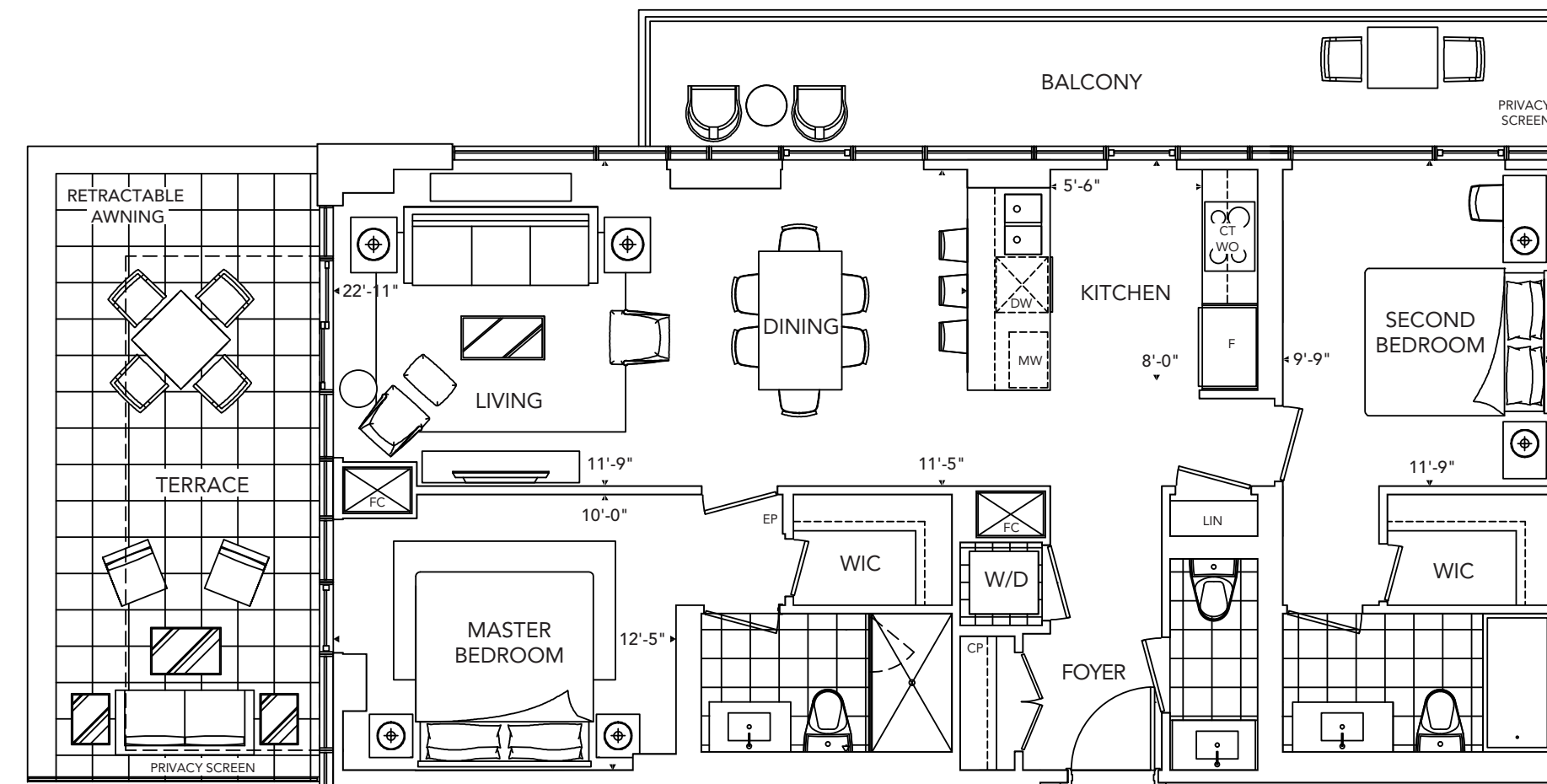
FACING NORTH



T4A

2 Bedroom

46



All dimensions are approximate and subject to normal construction variances. Dimensions may exceed the useable floor area. Sizes and specifications subject to change without notice. Furniture is displayed for illustration purposes only and does not necessarily reflect the electrical plan for the suite. Suites are sold unfurnished. E.&O.E. Tridel®, Tridel Built for Life® and Tridel Built Green. Built for Life® are registered trademarks of Tridel and used under license. ©Tridel 2015. All rights reserved. October 2015.

FACING LESLIE



