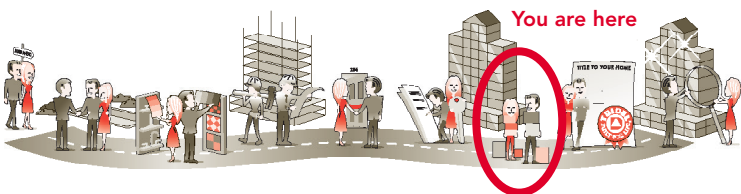


## Moving Day at Hullmark Corporate Centre

We look forward to welcoming you to your new office space. To make your moving day as easy as possible we wanted to provide you with some important information that you can share with your professional moving company.

- ✓ Reserve the move-in elevator early by contacting your Del Property Management Team at [hullmark.admin2@delcondo.com](mailto:hullmark.admin2@delcondo.com) or by phone at 416.551.8946.
- ✓ To avoid disappointment, don't plan on the elevator the same day as your closing. It typically takes until late afternoon before all of the legal and banking documents are processed.
- ✓ Your moving elevator dimensions are: 6'10" wide X 4'4" deep X 9'6" height. The door to the moving elevator is 3'6" wide X 7' tall while the door to the moving room is 6'0" wide X 7'0" tall. If any of your materials are larger please contact your Property Management team before your moving day so we can investigate possible solutions.
- ✓ Professional movers should conduct an **on-site visit** at the Hullmark Centre to ensure that they have all necessary protection and equipment. Your moving company can contact the on-site Property Management office to coordinate their site visit.
- ✓ Once you have arrived, you may gain access to the moving area through the Concierge, entering the community off of 2 Anndale Drive.



# HULLMARK CORPORATE CENTRE▲

---

## Community Address:

4789 Yonge St, North York, ON M2N 0G3

## Elevator & Delivery Bookings:

Del Property Management: 416.551.8946

[hullmark.admin2@delcondo.com](mailto:hullmark.admin2@delcondo.com)

Office Hours: Mon, Wed thru Friday 9 am to 5 pm

Tuesdays from 9 am to 7 pm

Please contact your Property Management team for available dates and times. As a reminder, we do not recommend using the elevator on the date of your closing as it typically takes until late afternoon before all of the legal and banking documents are processed.

## Enter Moving Area from Anndale Drive

