



Toronto's Next Great Neighbourhood.



GLEN ROAD
PEDESTRIAN BRIDGE

ACCESS TO
SHERBOURNE
SUBWAY STATION

ROSEDALE VALLEY ROAD

ROSEDALE VALLEY

GLEN ROAD

RESIDENTIAL

FUTURE 3-STORY
RESIDENTIAL
DEVELOPMENT
(8 UNITS)*

WILLIAM WHITEHEAD
HOUSE (RESTORED
HERITAGE HOME)*

CHURCH OF
ST. PETER AND ST. SIMON

BLOOR STREET EAST

EDGE DALE ROAD

NEW
RETAIL

250 METRES TO
CASTLE FRANK
SUBWAY STATION >

HOWARD STREET

Via Bloor
575
BLOOR ST. E.
TORONTO, ONT. M4W 1A7

PHASE 1

Via Bloor
585
BLOOR ST. E.
TORONTO, ONT. M4W 1A7

PHASE 2

ONTARIO STREET

ROSE AVENUE

PARLIAMENT STREET

*This development is not affiliated with or related to Tridel.
The Via Bloor Outdoor Amenity Space on 5th Floor will not be complete or available
for use at the time of Tower 1 occupancy. These amenities will be provided upon
the completion of future phases of the development. Specifications are subject to
change without notice. E. & O.E. February 2017.



A Tale of Two Towers.



575 & 585 Bloor Street East • Via Bloor



A Breath of Fresh Air



Manicured Entryway Garden • Via Bloor



Make an Entrance.



Welcoming Luxury • Via Bloor



Stay a While.





Rooftop Temptations.



The Via Bloor Outdoor Amenity Space on 5th Floor will not be complete or available for use at the time of Tower 1 occupancy. These amenities will be provided upon the completion of future phases of the development. Specifications are subject to change without notice. E. & O.E. February 2017.

5th Floor Outdoor Swimming Pool • Via Bloor



A Rejuvenating Dip.





Mind Over Muscle.



SportsArt.....

Fitness Centre • Via Bloor



Lights. Camera. Action.



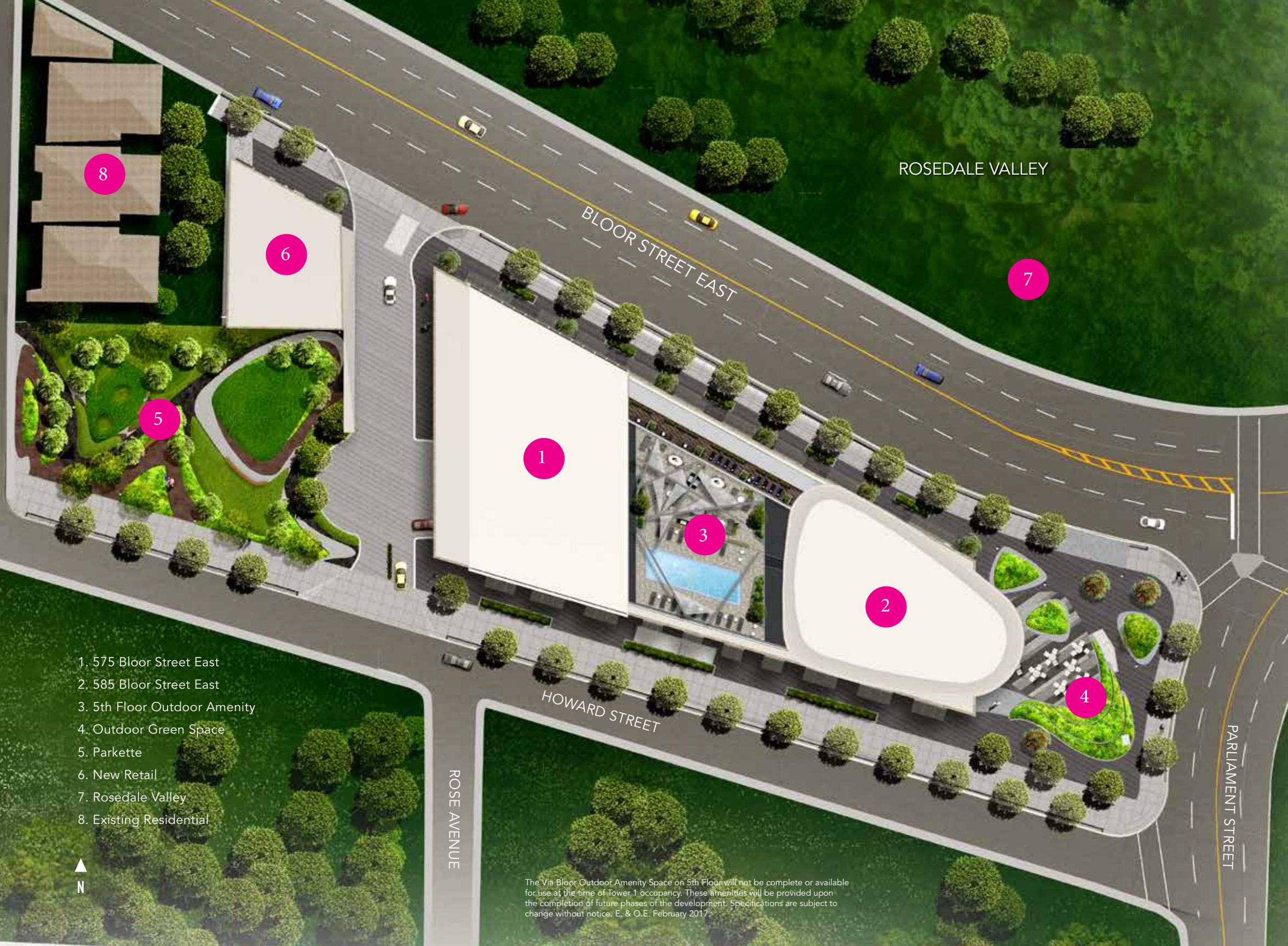


Your Social Network.





Site Plan



ROSEDALE VALLEY

BLOOR STREET EAST

HOWARD STREET

ROSE AVENUE

PARLIAMENT STREET

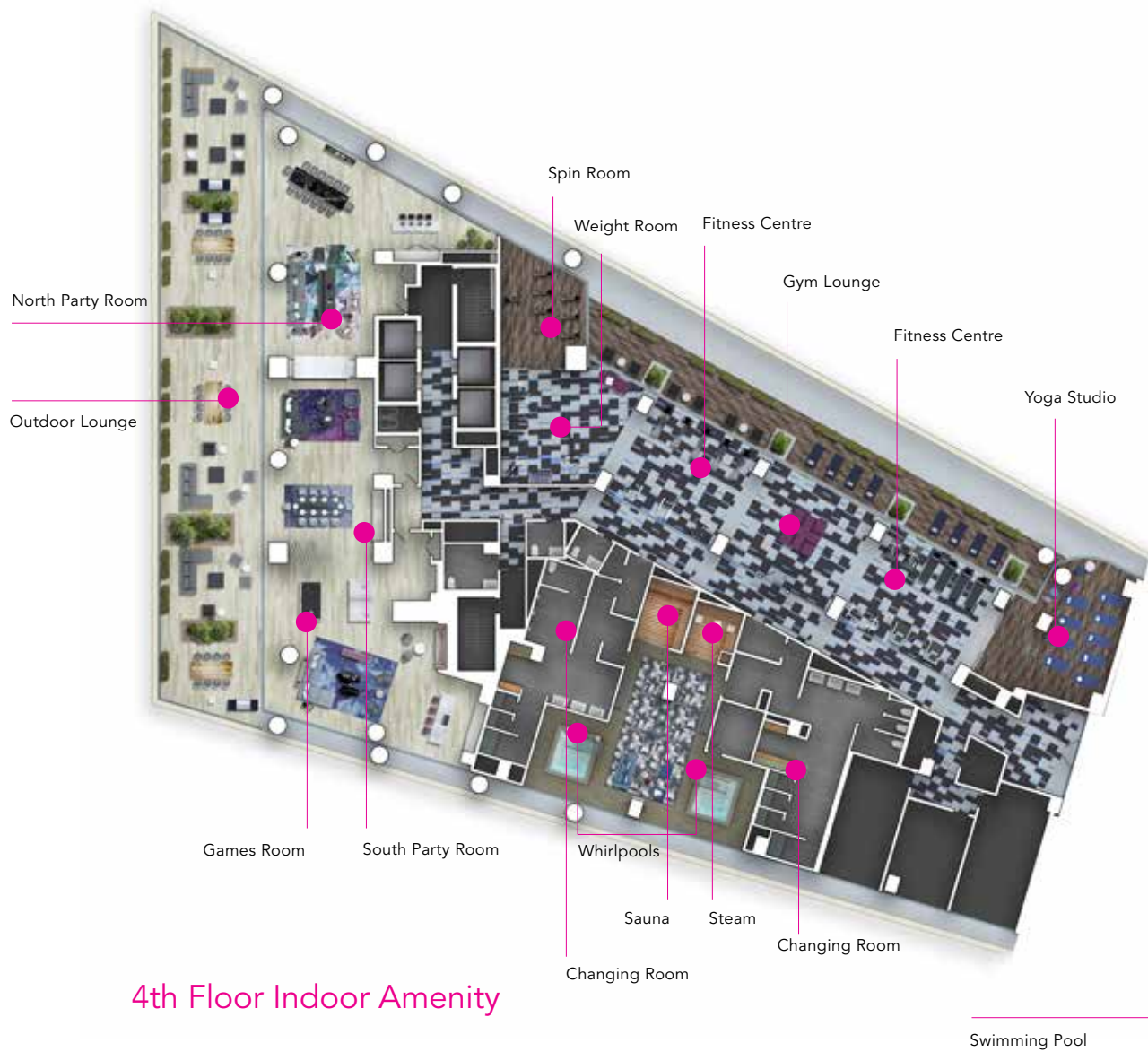
- 1. 575 Bloor Street East
- 2. 585 Bloor Street East
- 3. 5th Floor Outdoor Amenity
- 4. Outdoor Green Space
- 5. Parkette
- 6. New Retail
- 7. Rosedale Valley
- 8. Existing Residential



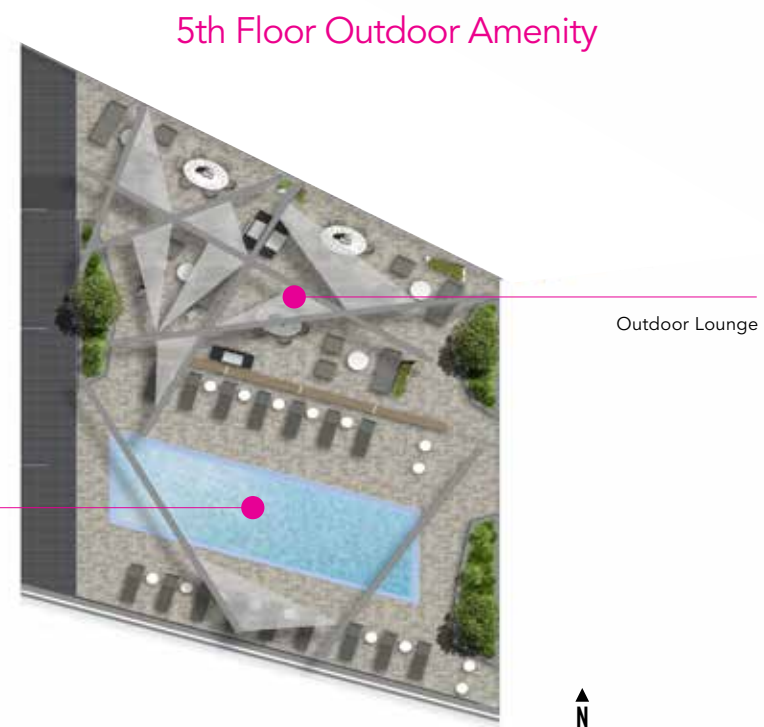
The Via Bloor Outdoor Amenity Space on 5th Floor will not be complete or available for use at the time of Tower 1 occupancy. These amenities will be provided upon the completion of future phases of the development. Specifications are subject to change without notice. E. & O.E. February 2017.



Amenity Plan



4th Floor Indoor Amenity



5th Floor Outdoor Amenity

The following Via Bloor amenities spaces will not be complete or available for use at the time of Phase 1 occupancy: Fitness Centre, Spin Room, Weight Room, Gym Lounge, Yoga Studio, Whirlpool, Steam, Sauna, Men's Change Room, Women's Change Room and Outdoor Amenity Space on 5th Floor. These amenities will be provided upon the completion of future phases of the development. Specifications are subject to change without notice. E. & O.E. February 2017.

Interiors







A Taste of Things to Come.





Personal Space.





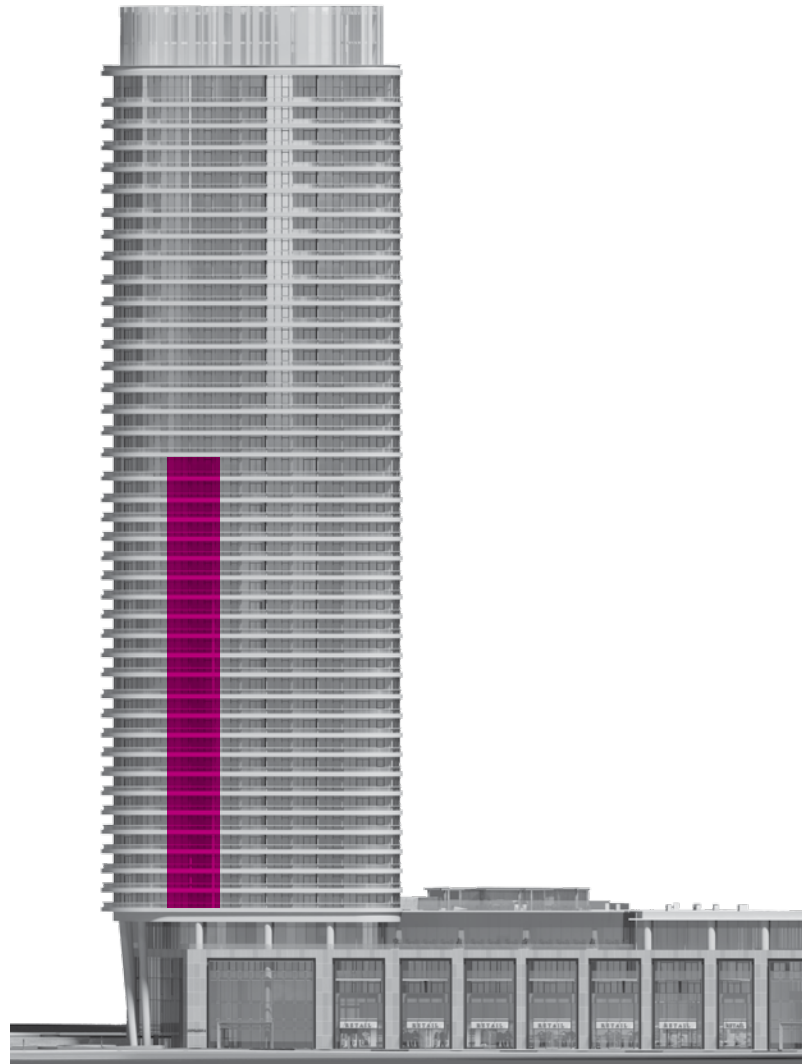
Indulgence is Served.



The *Via* Collection

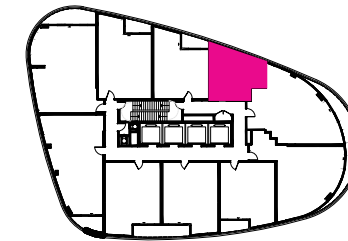


Suite S1-2 Studio •

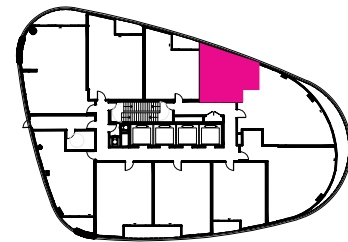


North Face

585 Bloor Street East

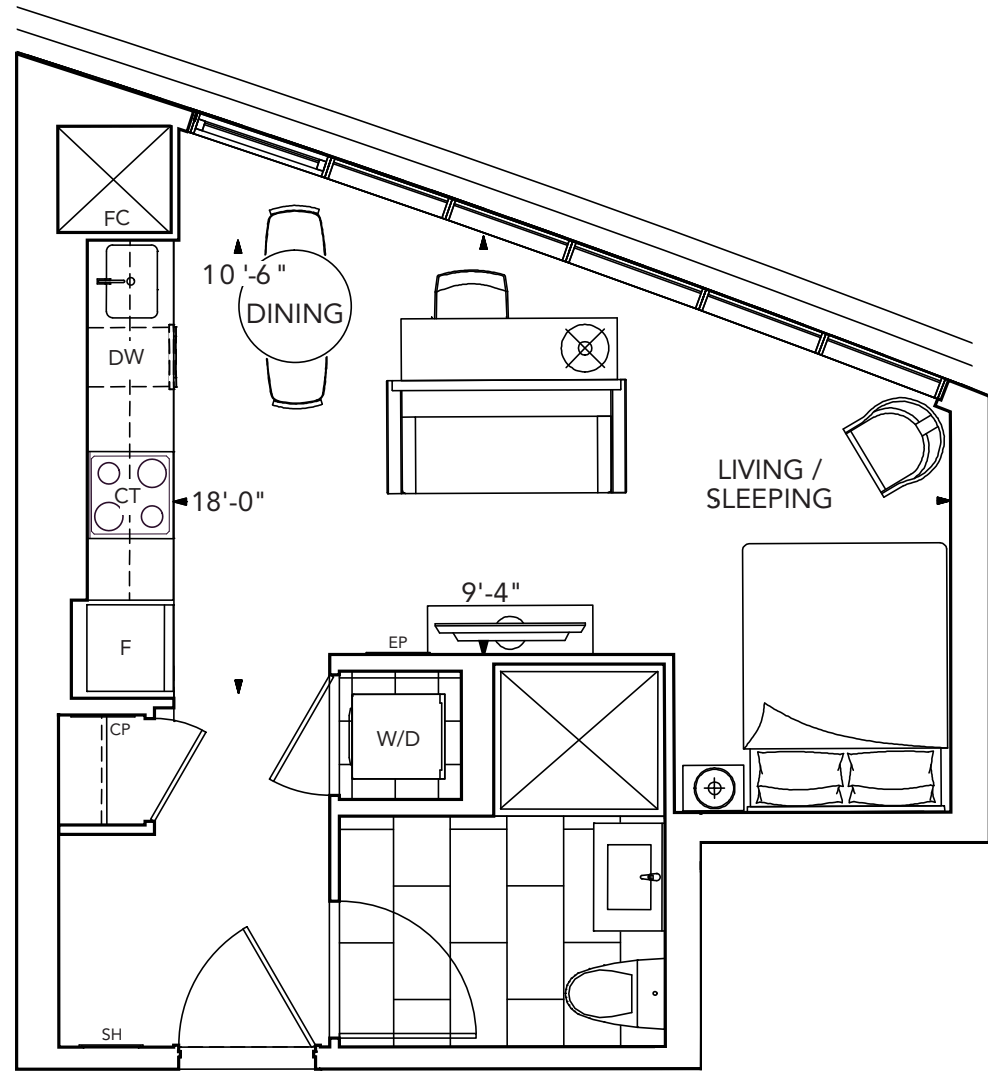


FLOOR 6-27



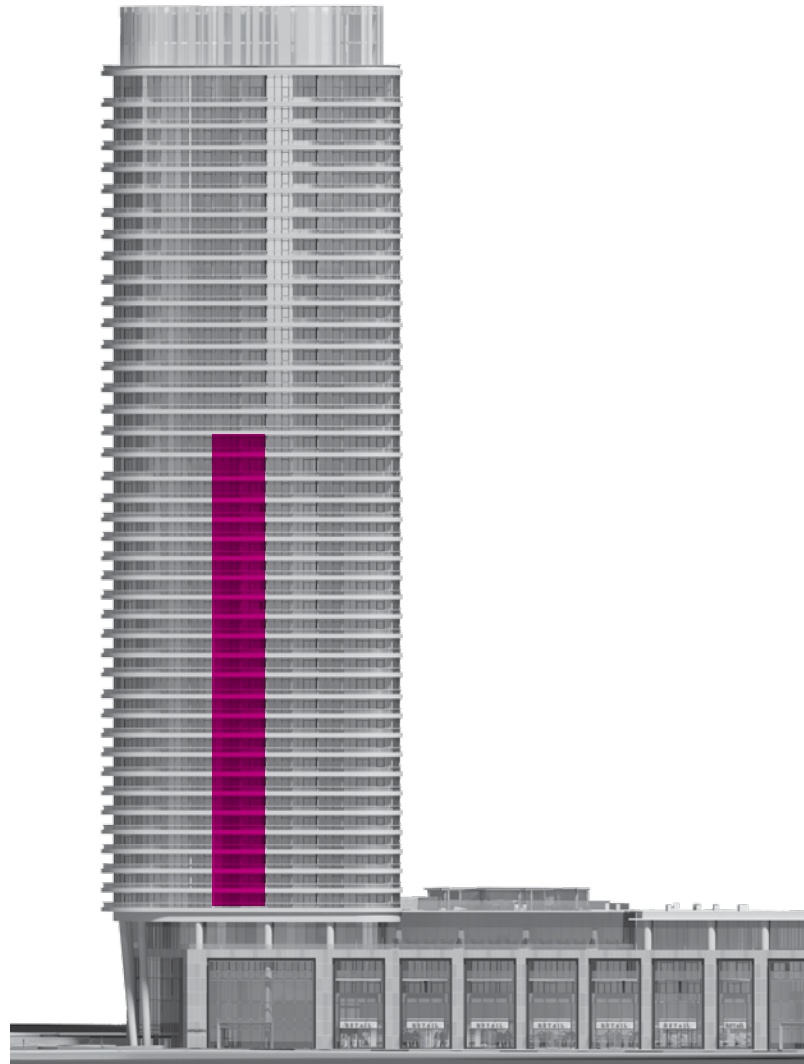
FLOOR 5

All dimensions are approximate and subject to normal construction variances. Dimensions may exceed the useable floor area. Sizes and specifications subject to change without notice. Furniture is displayed for illustration purposes only and does not necessarily reflect the electrical plan for the suite. Suites are sold unfurnished. E.&O.E. ©Tridel 2017. @Tridel, "D" design, Tridel Built for Life, Tridel Built for Life Design, and Built Green. Built for Life are registered Trademarks of Tridel Corporation. Project names and logos are Trademarks of their respective owners. All rights reserved. E.&O.E. February 2017.



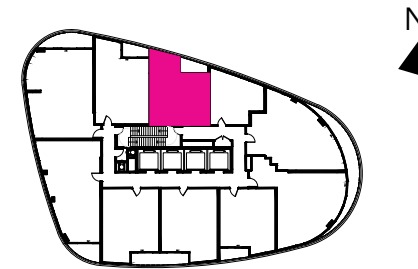
Suite 1A-2

1 Bedroom •

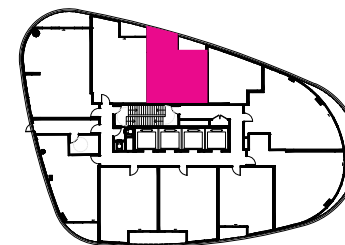


North Face

585 Bloor Street East

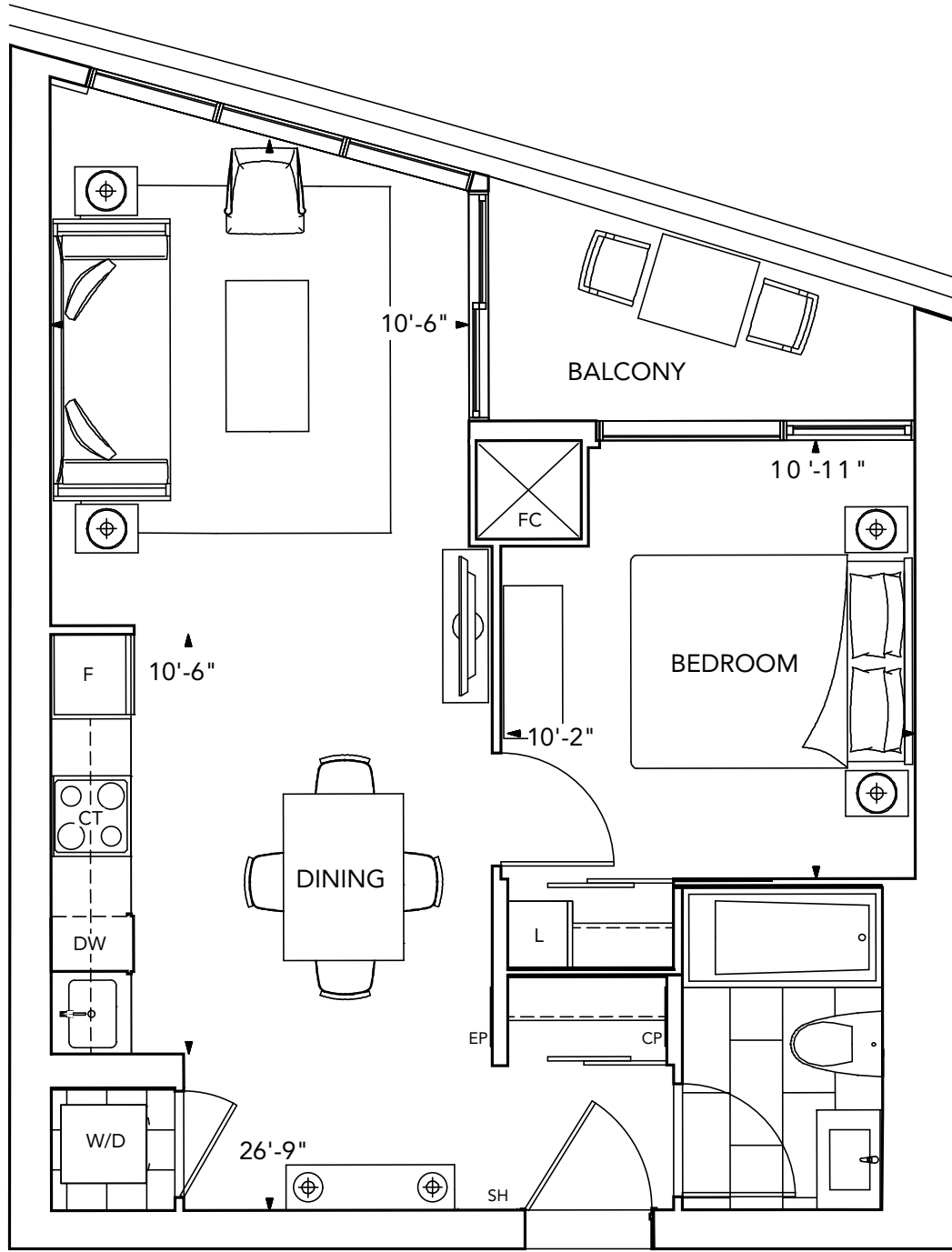


FLOOR 6-27



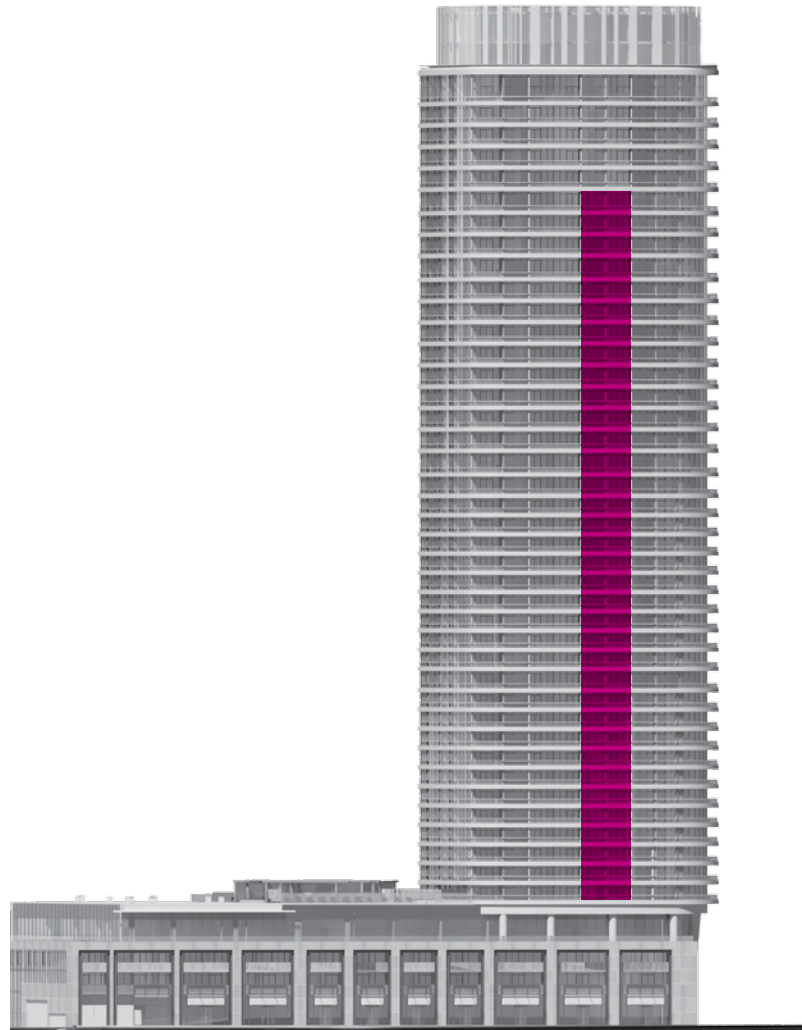
FLOOR 5

All dimensions are approximate and subject to normal construction variances. Dimensions may exceed the useable floor area. Sizes and specifications subject to change without notice. Furniture is displayed for illustration purposes only and does not necessarily reflect the electrical plan for the suite. Suites are sold unfurnished. E.&O.E. ©Tridel 2017. @Tridel, "D" design, Tridel Built for Life, Tridel Built for Life Design, and Built Green. Built for Life are registered Trademarks of Tridel Corporation. Project names and logos are Trademarks of their respective owners. All rights reserved. E.&O.E. February 2017.



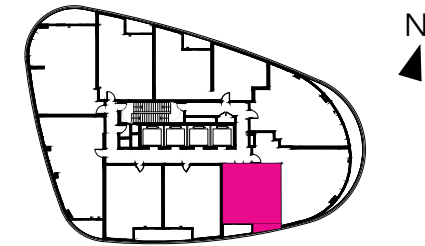
Suite 1B+D-2

1 Bedroom + Den •

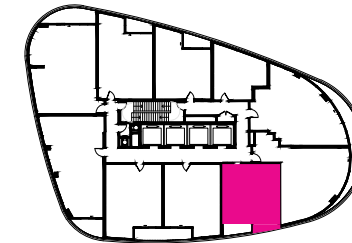


South Face

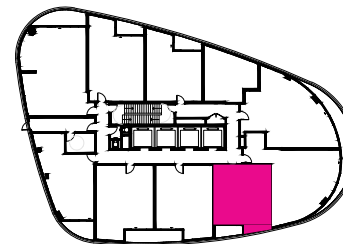
585 Bloor Street East



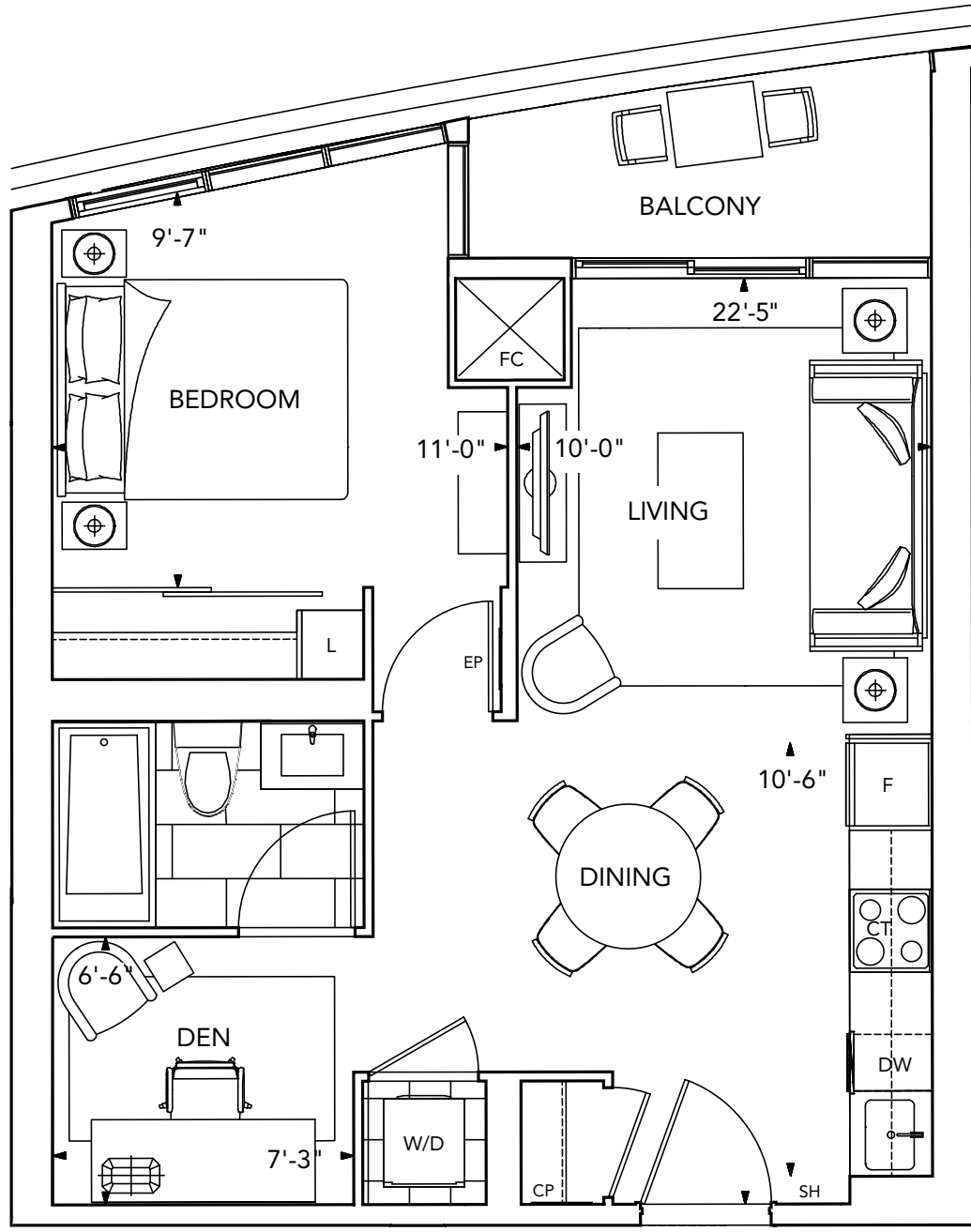
FLOOR 28-39



FLOOR 6-27

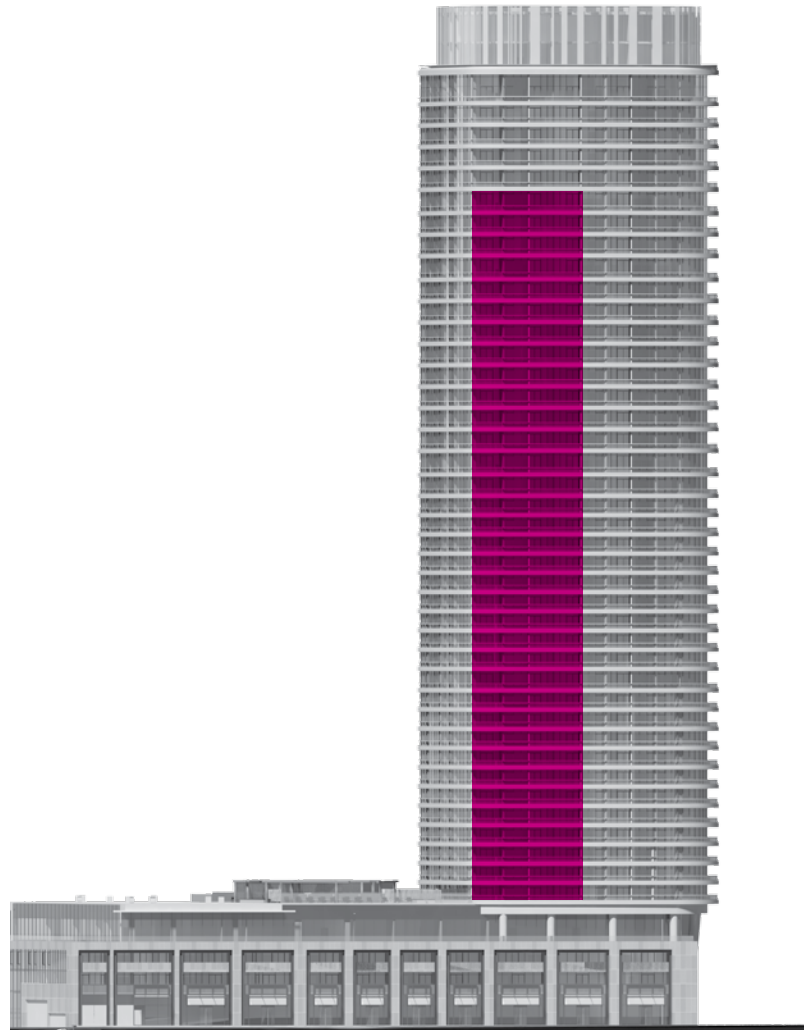


FLOOR 5



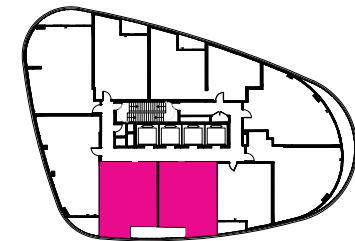
Suite 1C+D-2/1C+DR-2

1 Bedroom + Den •

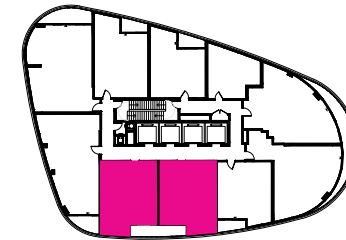


South Face

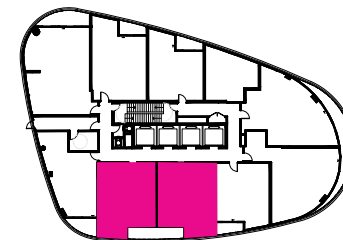
585 Bloor Street East



FLOOR 28-39

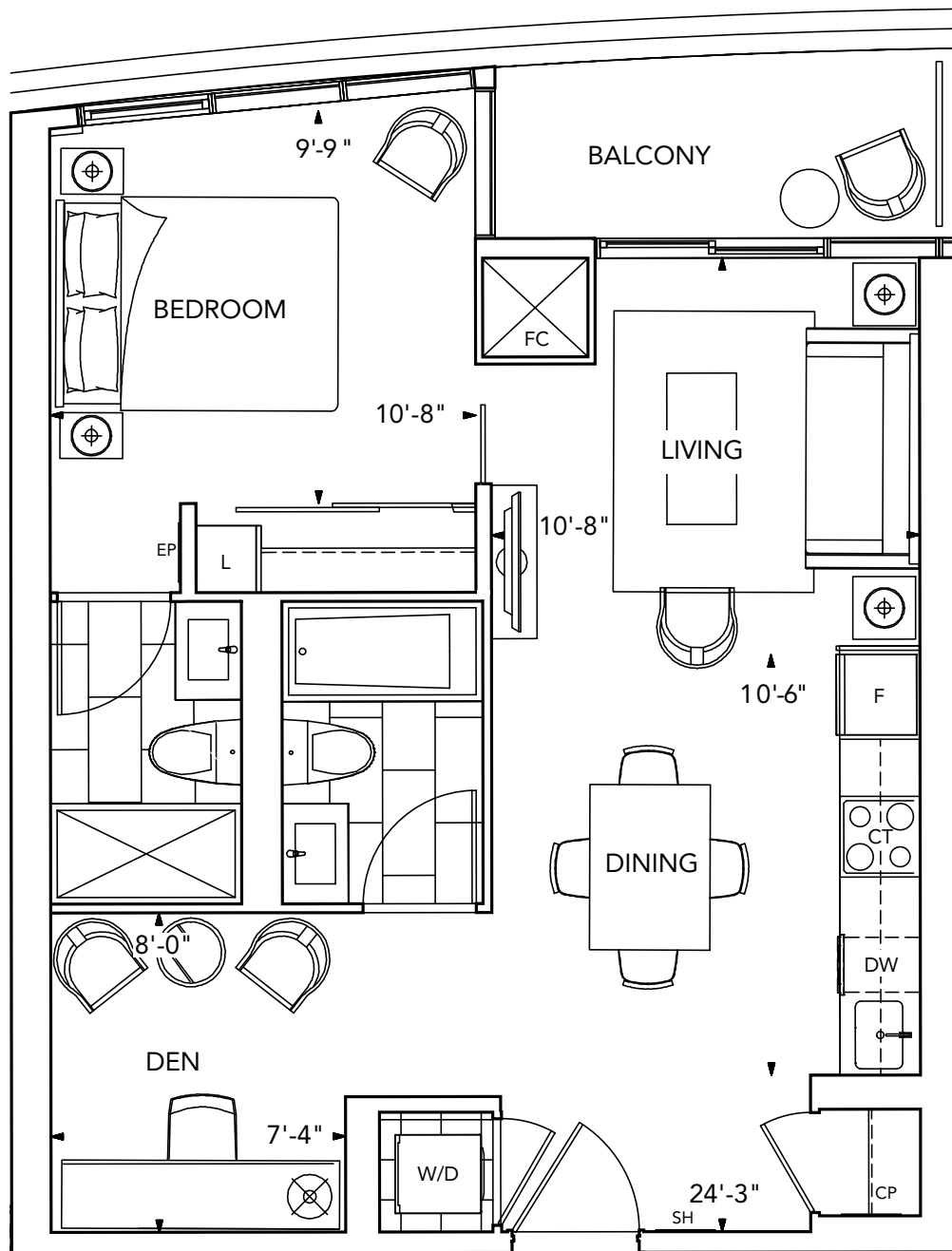


FLOOR 6-27



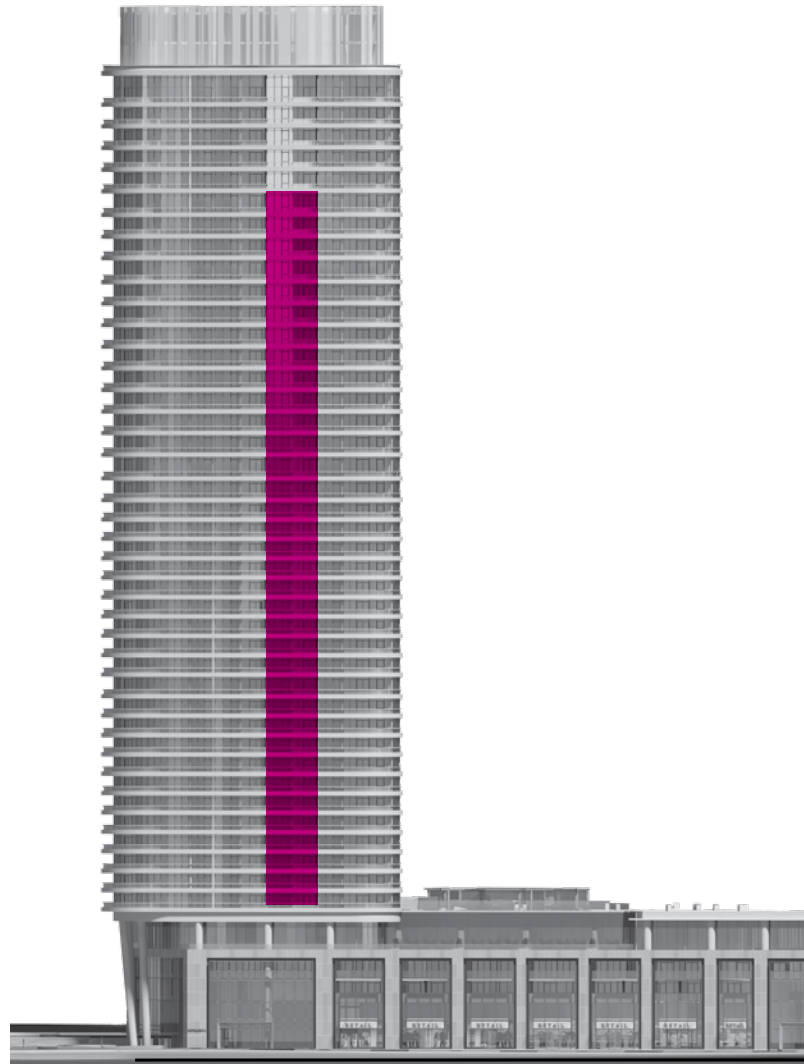
FLOOR 5





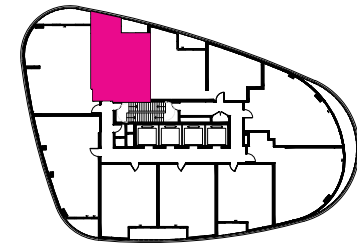
Suite 1D+D-2

1 Bedroom + Den •

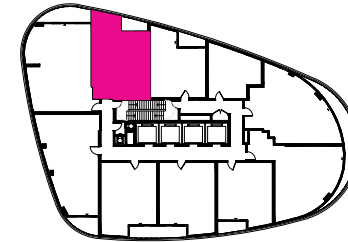


North Face

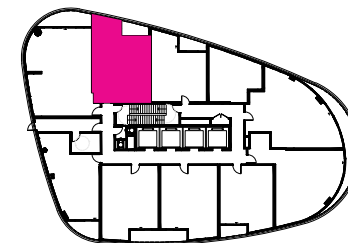
585 Bloor Street East



FLOOR 28-39

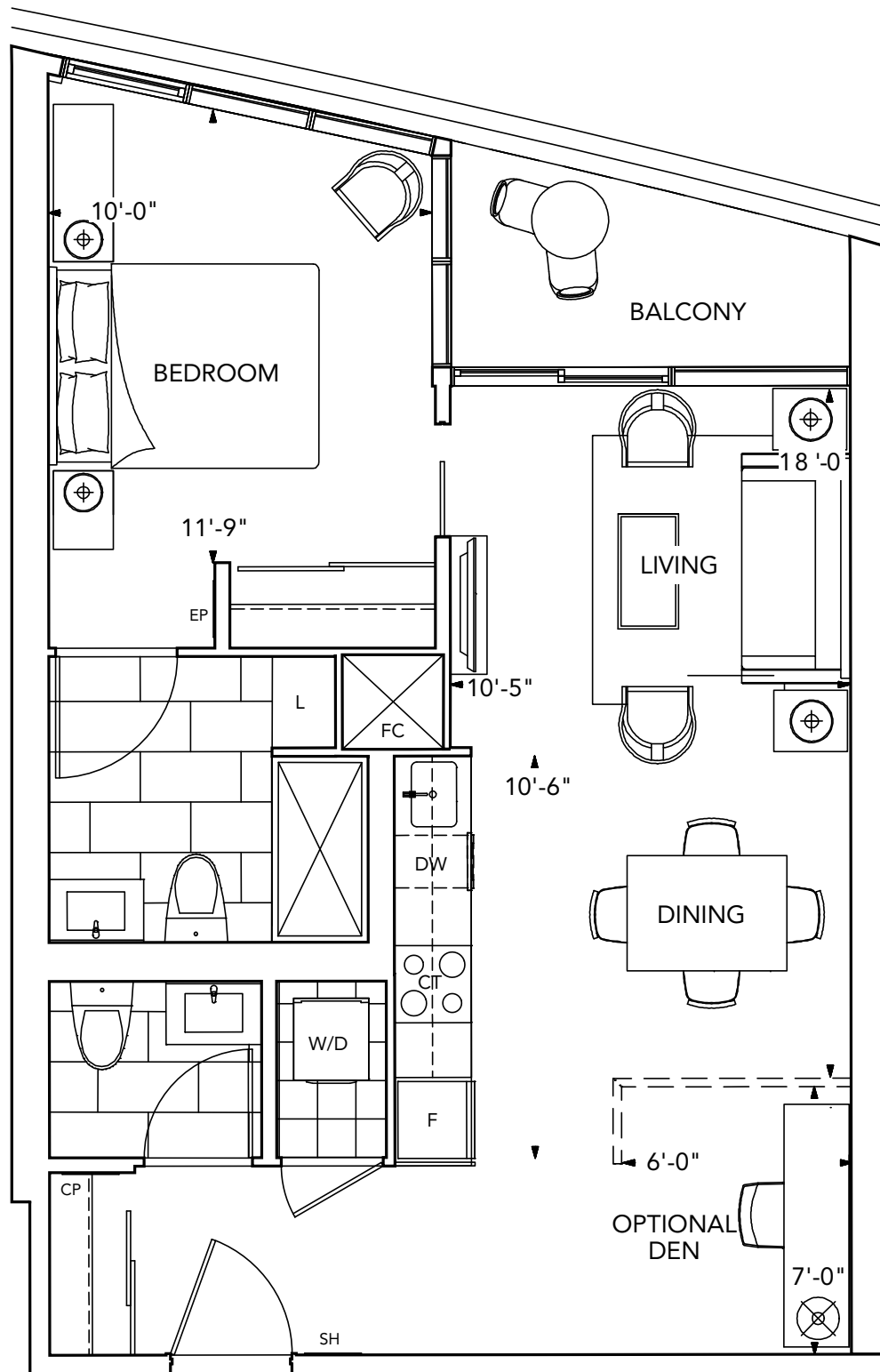


FLOOR 6-27



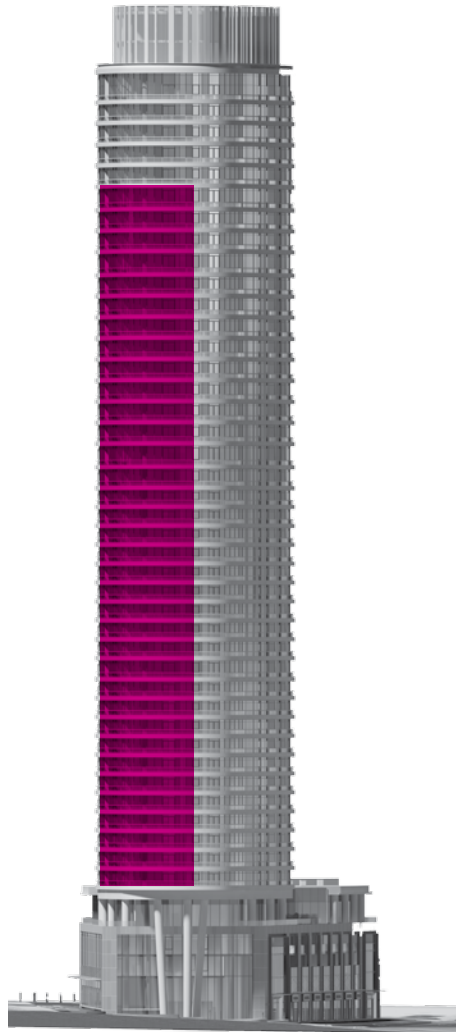
FLOOR 5



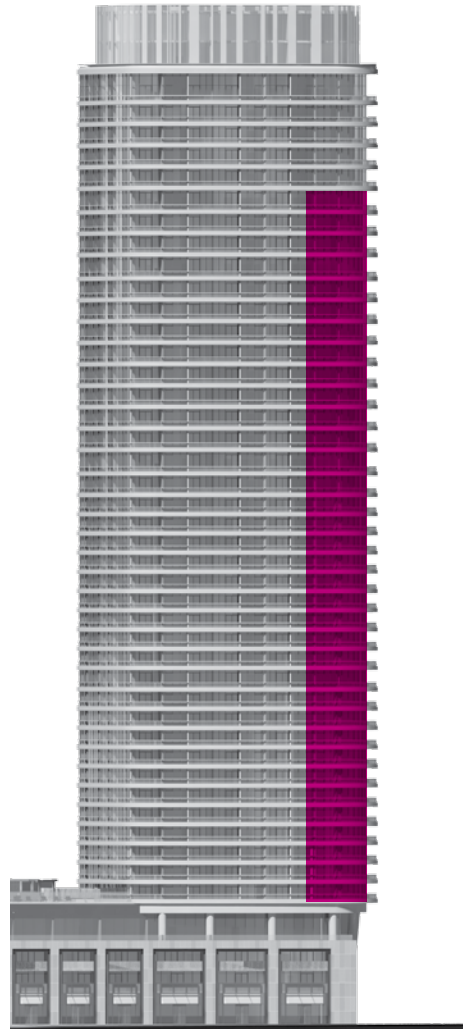


Suite 2A-2

2 Bedroom •

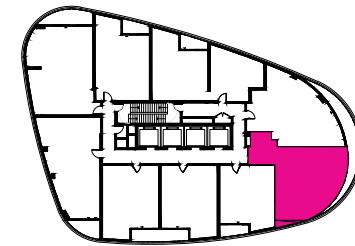


East Face

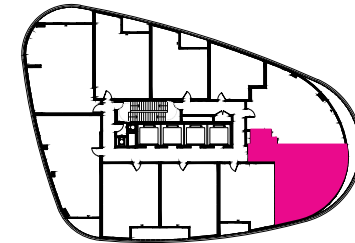


South Face

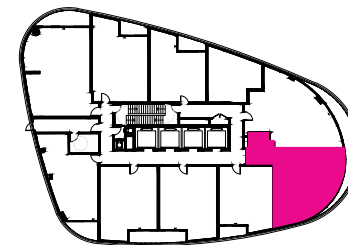
585 Bloor Street East



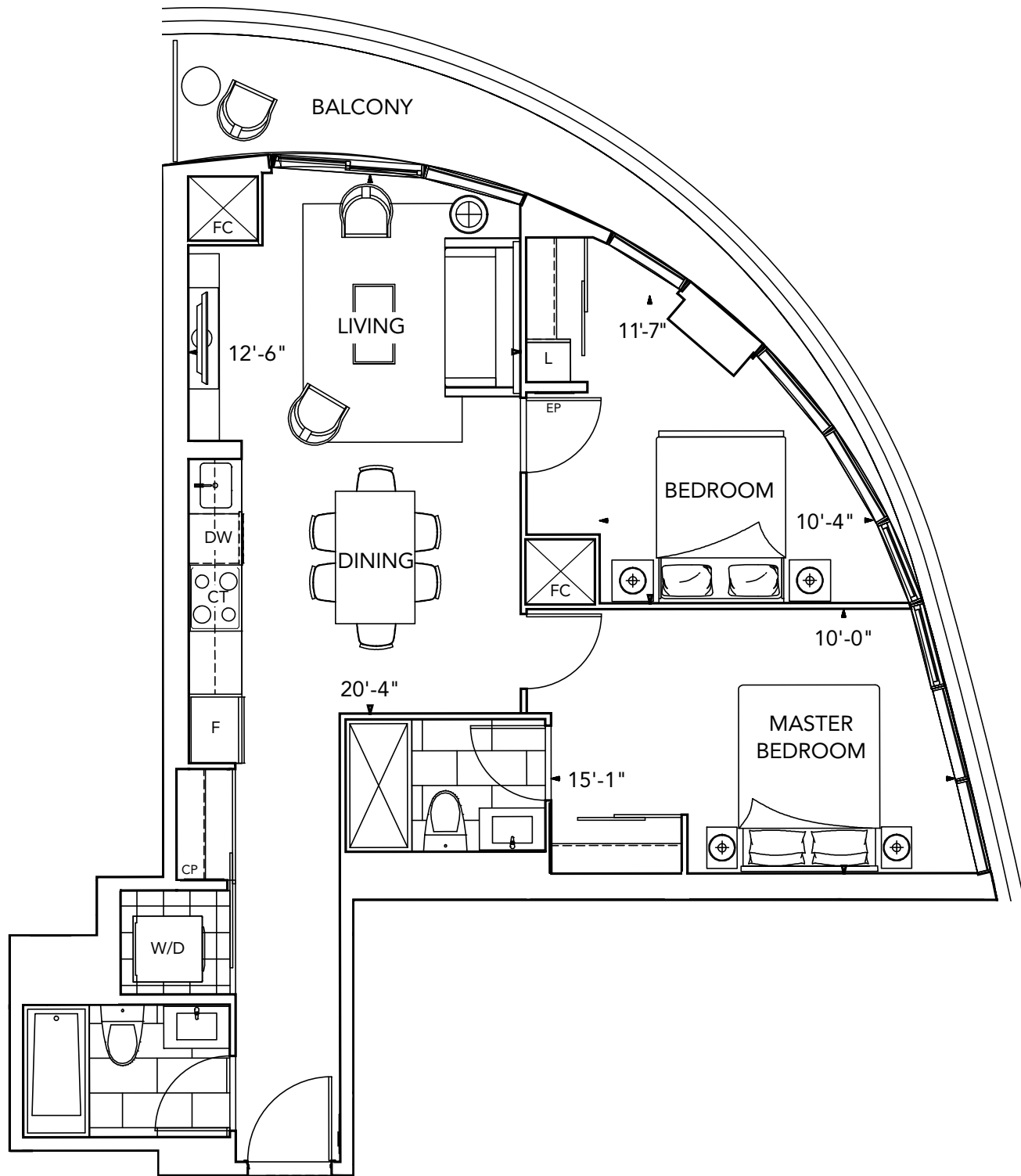
FLOOR 28-39



FLOOR 6-27

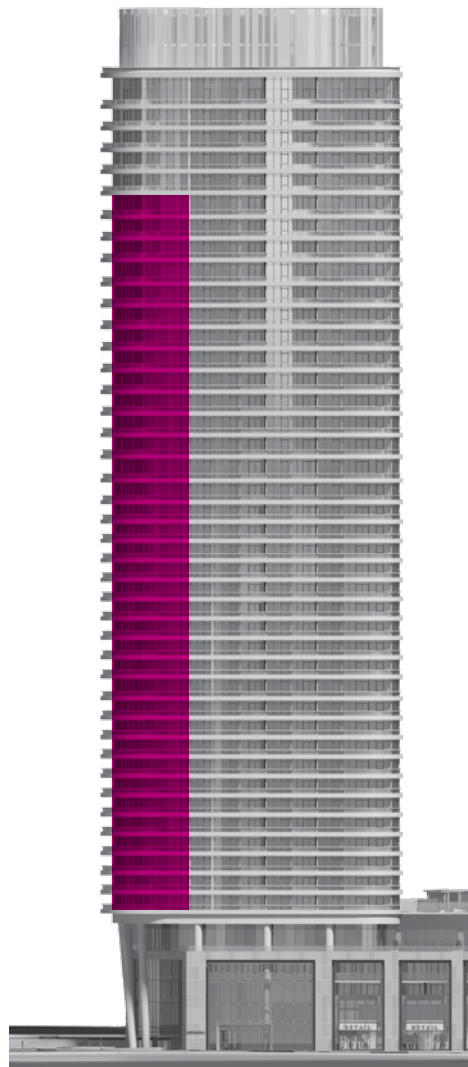


FLOOR 5

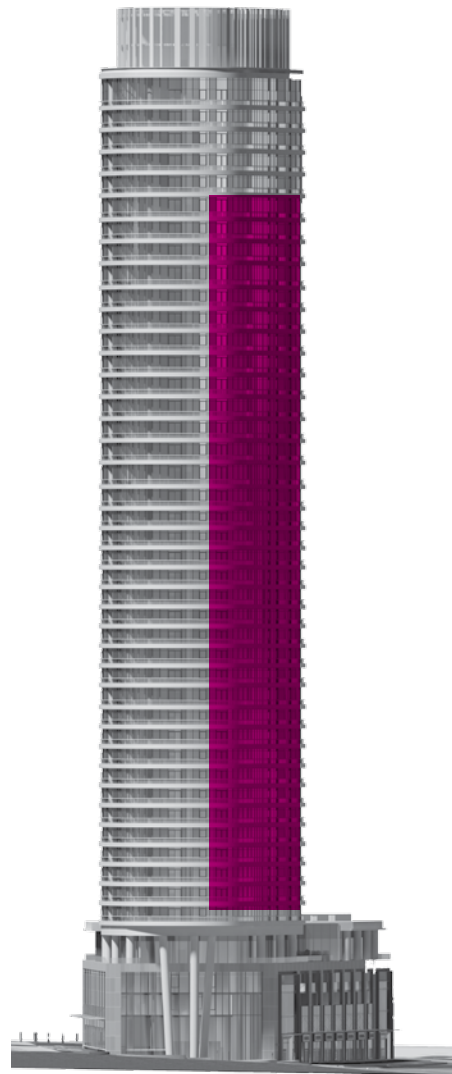


Suite 2B-2

2 Bedroom •

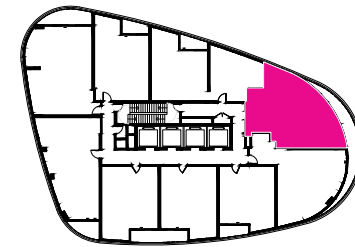


North Face

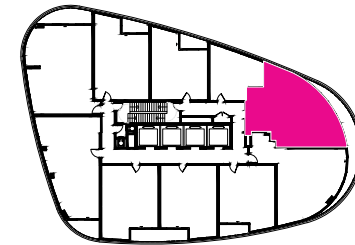


East Face

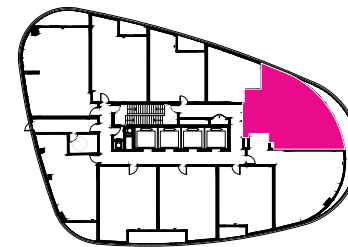
585 Bloor Street East



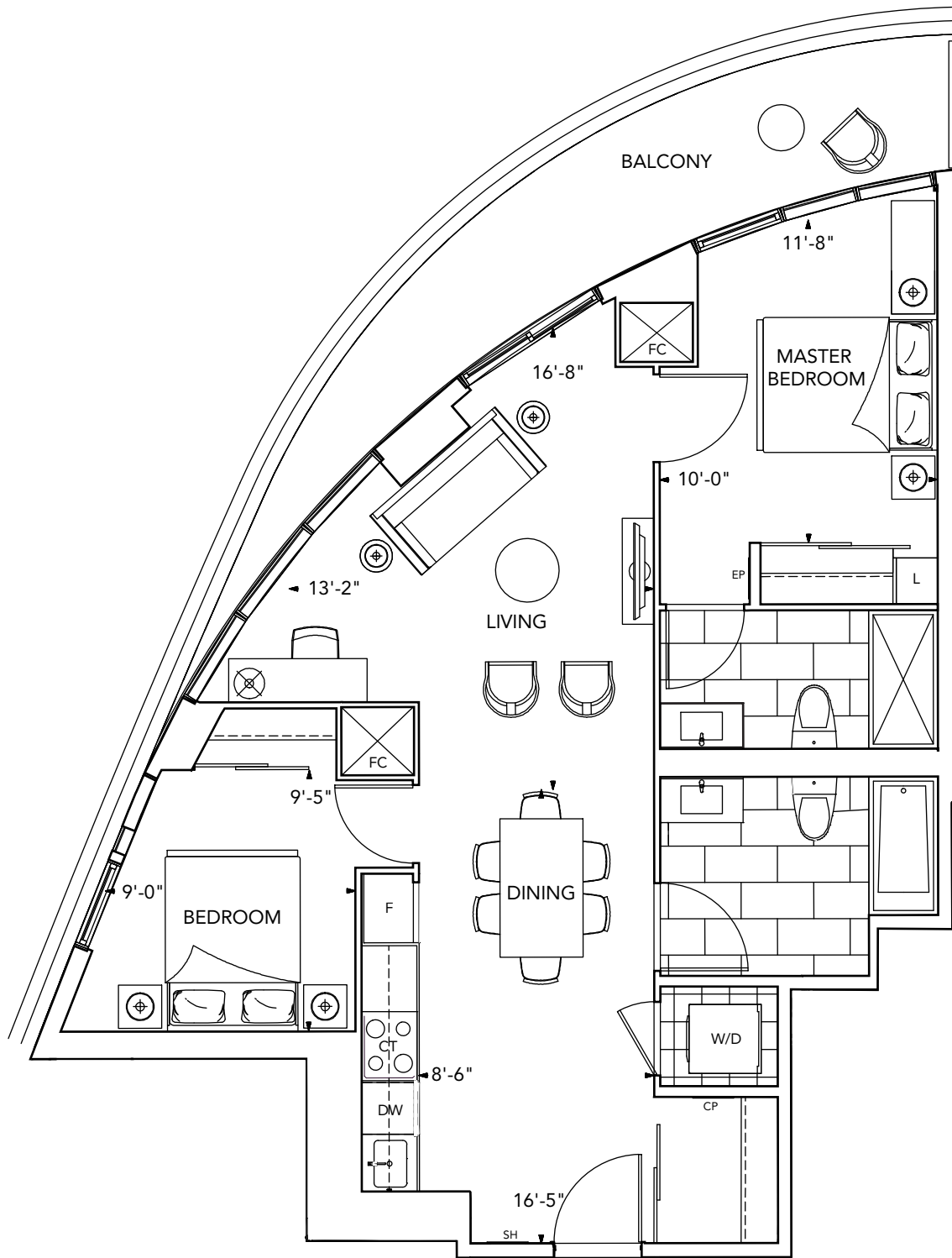
FLOOR 28-39



FLOOR 6-27



FLOOR 5



Suite 2C-2

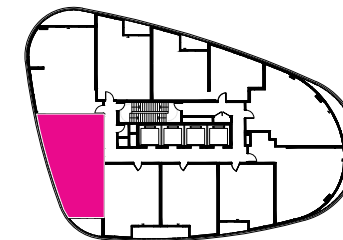
2 Bedroom •



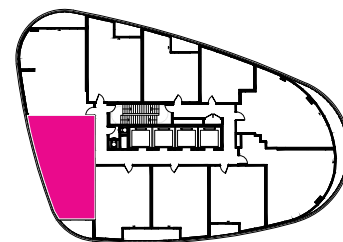
South Face

West Face

585 Bloor Street East



FLOOR 28-39

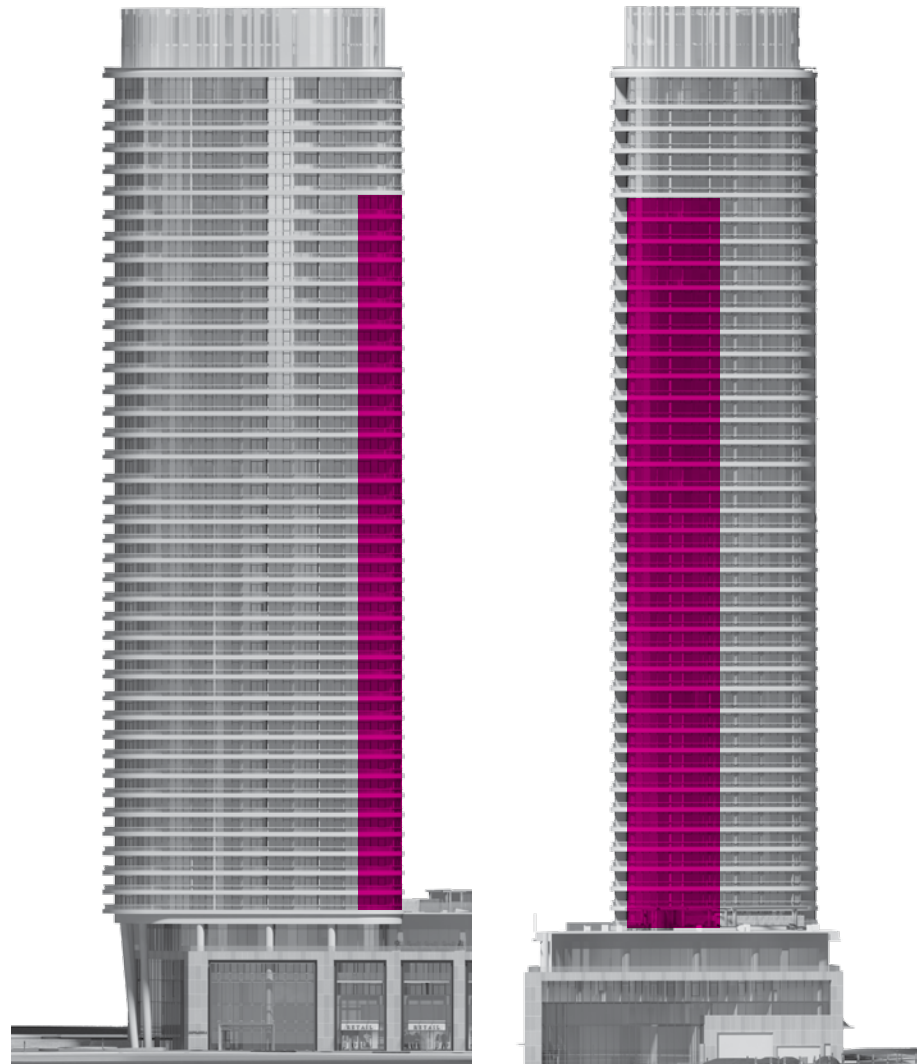


FLOOR 6-27

All dimensions are approximate and subject to normal construction variances. Dimensions may exceed the useable floor area. Sizes and specifications subject to change without notice. Furniture is displayed for illustration purposes only and does not necessarily reflect the electrical plan for the suite. Suites are sold unfurnished. E.&O.E. ©Tridel 2017. ©Tridel, "D" design, Tridel Built for Life, Tridel Built for Life Design, and Built Green. Built for Life are registered Trademarks of Tridel Corporation. Project names and logos are Trademarks of their respective owners. All rights reserved. E.&O.E. February 2017.

Suite 2D-2

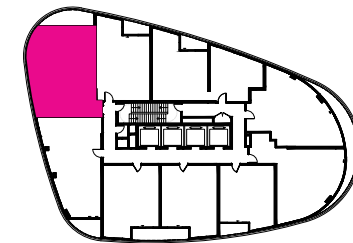
2 Bedroom •



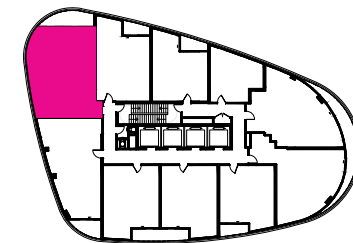
North Face

West Face

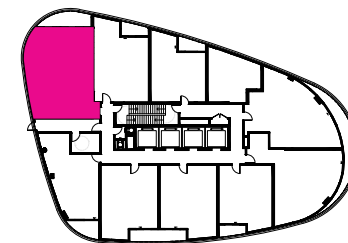
585 Bloor Street East



FLOOR 28-39

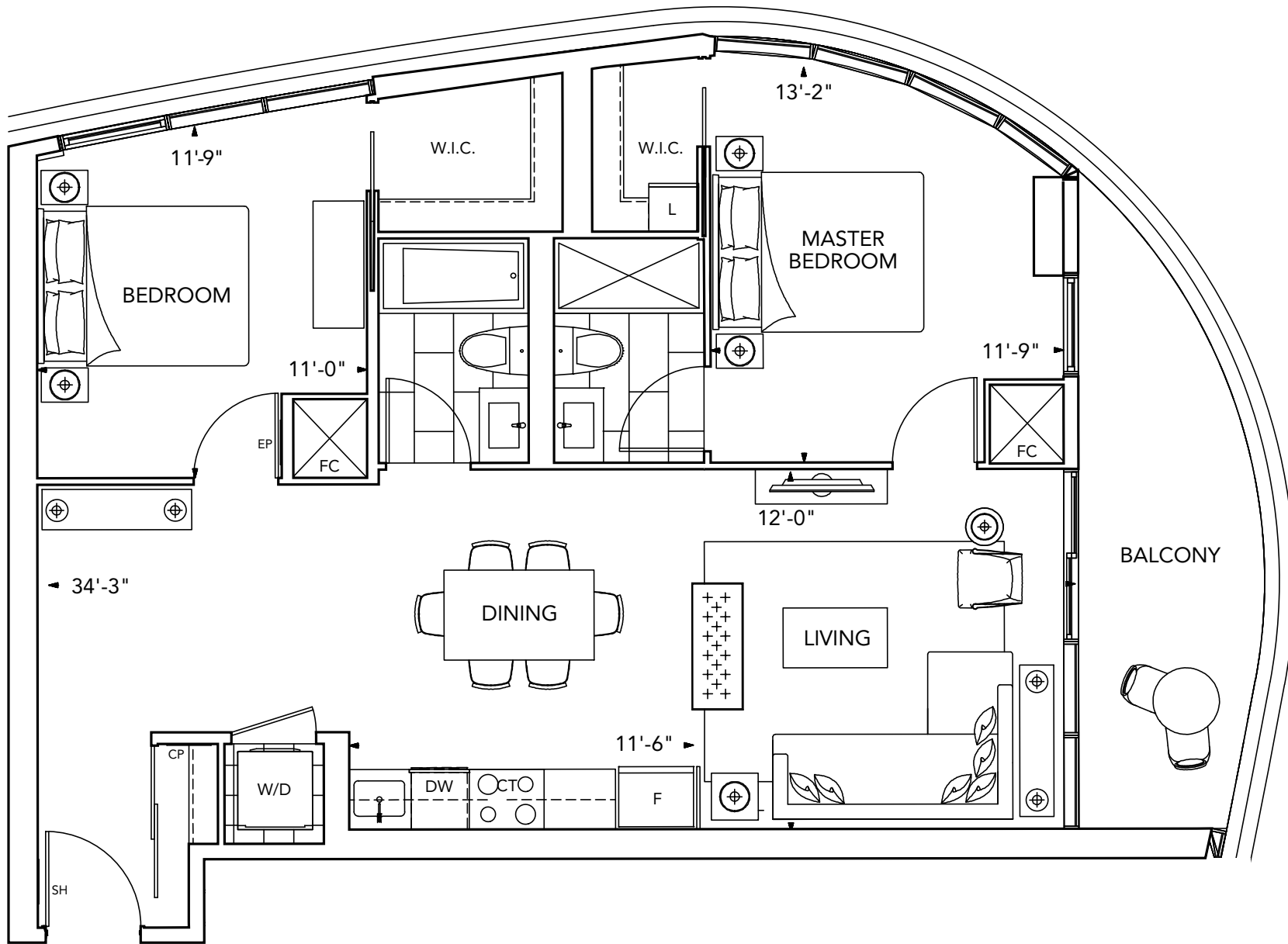


FLOOR 6-27



FLOOR 5

All dimensions are approximate and subject to normal construction variances. Dimensions may exceed the useable floor area. Sizes and specifications subject to change without notice. Furniture is displayed for illustration purposes only and does not necessarily reflect the electrical plan for the suite. Suites are sold unfurnished. E.&O.E. ©Tridel 2017. @Tridel, "D" design, Tridel Built for Life, Tridel Built for Life Design, and Built Green. Built for Life are registered Trademarks of Tridel Corporation. Project names and logos are Trademarks of their respective owners. All rights reserved. E.&O.E. February 2017.



Via Collection Features & Finishes

GENERAL

- Smooth ceilings painted white to all areas of suite.
- The ceiling height of the unit will be approximately 8' for Floors 5 to 18 inclusive, measured from the upper surface of the concrete floor slab to the underside of the concrete ceiling slab, provided however that various areas of the dwelling unit may contain (or be subject to) ceiling bulkheads and/or dropped ceilings, in order to facilitate the installation of structural components, mechanical systems and/or ductwork, and accordingly in those areas of the unit that are subject to said bulkheads and/or dropped ceilings the overall ceiling height will be reduced accordingly.
- The ceiling height of the unit will be approximately 9' for Floors 2 and 3 and 19 to 36 inclusive, measured from the upper surface of the concrete floor slab to the underside of the concrete ceiling slab, provided however that various areas of the dwelling unit may contain (or be subject to) ceiling bulkheads and/or dropped ceilings, in order to facilitate the installation of structural components, mechanical systems and/or ductwork, and accordingly in those areas of the unit that are subject to said bulkheads and/or dropped ceilings the overall ceiling height will be reduced accordingly.
- Interior walls are primed and then painted with two coats of off-white, quality latex paint (bathroom(s) painted satin off-white, and all woodwork and trim painted with durable white semi-gloss paint). Paints have low levels of volatile organic compounds (VOCs).
- 6'-8" interior contemporary style doors with metal lever hardware for suites with 8' ceilings. Suites with 9' ceilings will feature 7' interior contemporary style doors.

FLOOR COVERINGS

- Premium plank laminate floating floor with acoustic underlay to all rooms except bathroom(s) and laundry.
- Designer selected premium porcelain floor tiles in bathroom(s).
- White ceramic floor tiles in laundry/storage areas.

KITCHEN

- Selection of one of three designer kitchen cabinetry packages with two tone kitchen cabinets featuring contemporary style doors. Finishes include designer hardware.
- Choice of granite or quartz kitchen countertop with polished single square edge and undermount single basin stainless steel sink.
- Tile backsplash.
- Polished chrome, single lever kitchen faucet, complete with pull out spray.
- Surface mounted lighting in kitchen area.
- LED undercabinet lighting.

1 bedroom and 1 bedroom plus den suites will feature appliances with:

- Panel ready energy efficient 18" dishwasher.
- Counter depth energy efficient stainless steel 24" refrigerator with bottom mount freezer.
- 24" stainless steel microwave/hood combo.
- 24" built-in convection oven in stainless steel finish.
- 24" built-in glass ceramic cooktop.

2 bedroom, 2 bedroom plus den and 3 bedroom suites will feature appliances with:

- Panel ready energy efficient 24" dishwasher.
- Counter depth energy efficient stainless steel 30" refrigerator with bottom mount freezer.
- 30" stainless steel microwave/hood combo.
- 30" built-in convection oven in stainless steel finish.
- 30" built-in glass ceramic cooktop.

BATHROOM(S)

- Vanity including solid surface top with integrated rectangular basin.
- Contemporary vanity mirror with integrated back lighting.
- 5' white soaker tub with polished chrome faucet*.
- Choice of ceramic and/or porcelain tiles in tub* and shower* enclosure and vanity wall subject to design.
- Potlight(s) in tub(s)* and shower enclosure(s)*.
- Pressure balanced and temperature controlled single lever shower faucet.
- High pressure, low-flow shower head(s).
- Polished chrome single lever vanity faucet.
- Dual flush, low consumption white toilet(s).
- Shower base complete with frameless glass shower enclosure* with chrome hardware.
- Polished chrome towel bar and toilet paper holder.

LAUNDRY

- Heavy-duty wiring and receptacle for dryer.
- 1 bedroom and 1 bedroom plus den suites to feature 24" wide stacked Energy Star high efficiency front loading washer and dryer (complete with stainless steel braided hose connections).
- 2 bedroom, 2 bedroom plus den and 3 bedroom suites to feature 27" wide stacked Energy Star high efficiency front loading washer and dryer.
- Laundry sink* complete with upper and lower cabinetry.



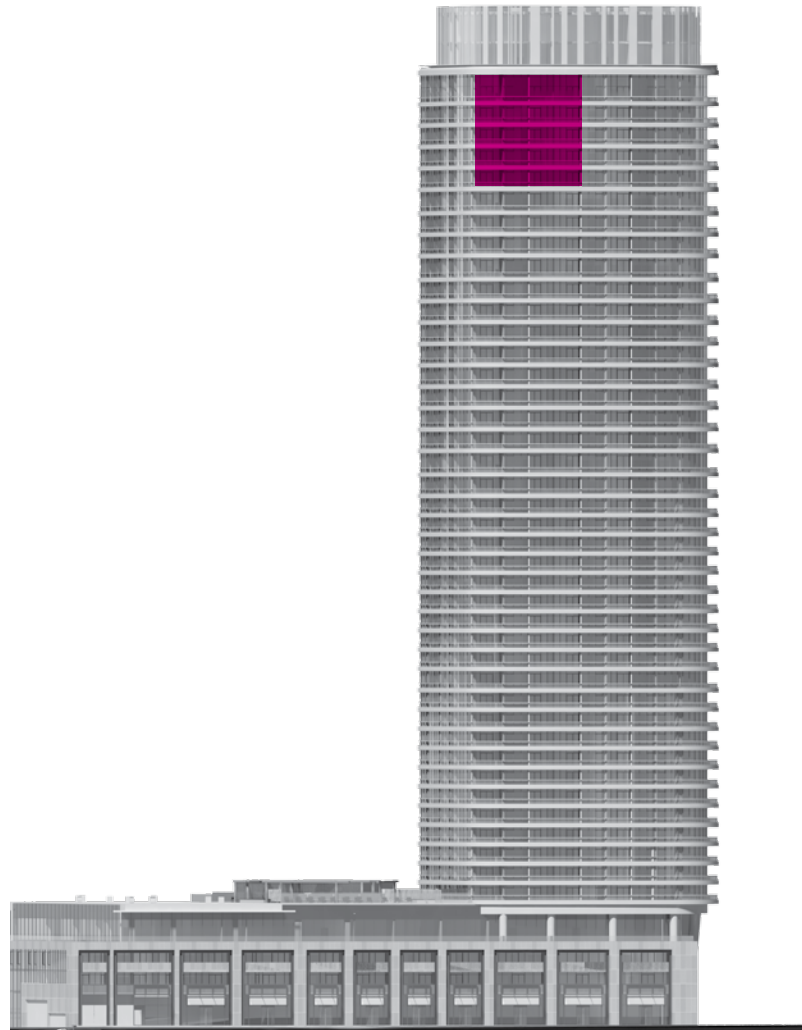
A black background with several large, overlapping, curved shapes in a vibrant pink color. One large shape is in the top right corner, and another is in the bottom right corner, partially cut off by the edge of the image.

The *Signature* Collection



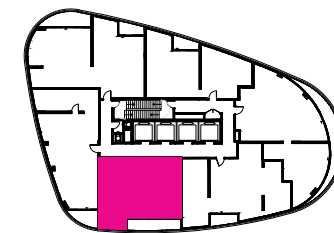
Suite 2E+D-2

2 Bedroom + Den •



South Face

585 Bloor Street East

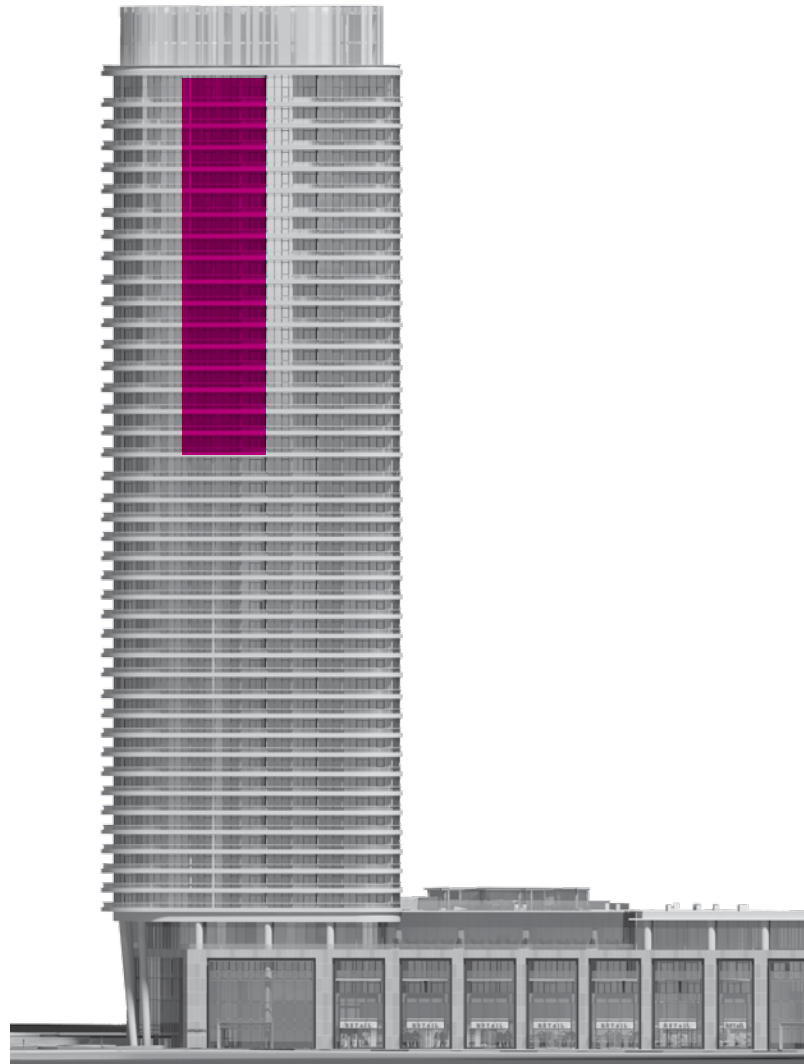


FLOOR 40-44



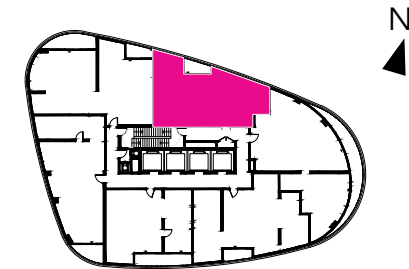
Suite 3A-2

3 Bedroom •

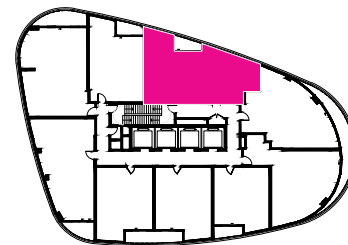


North Face

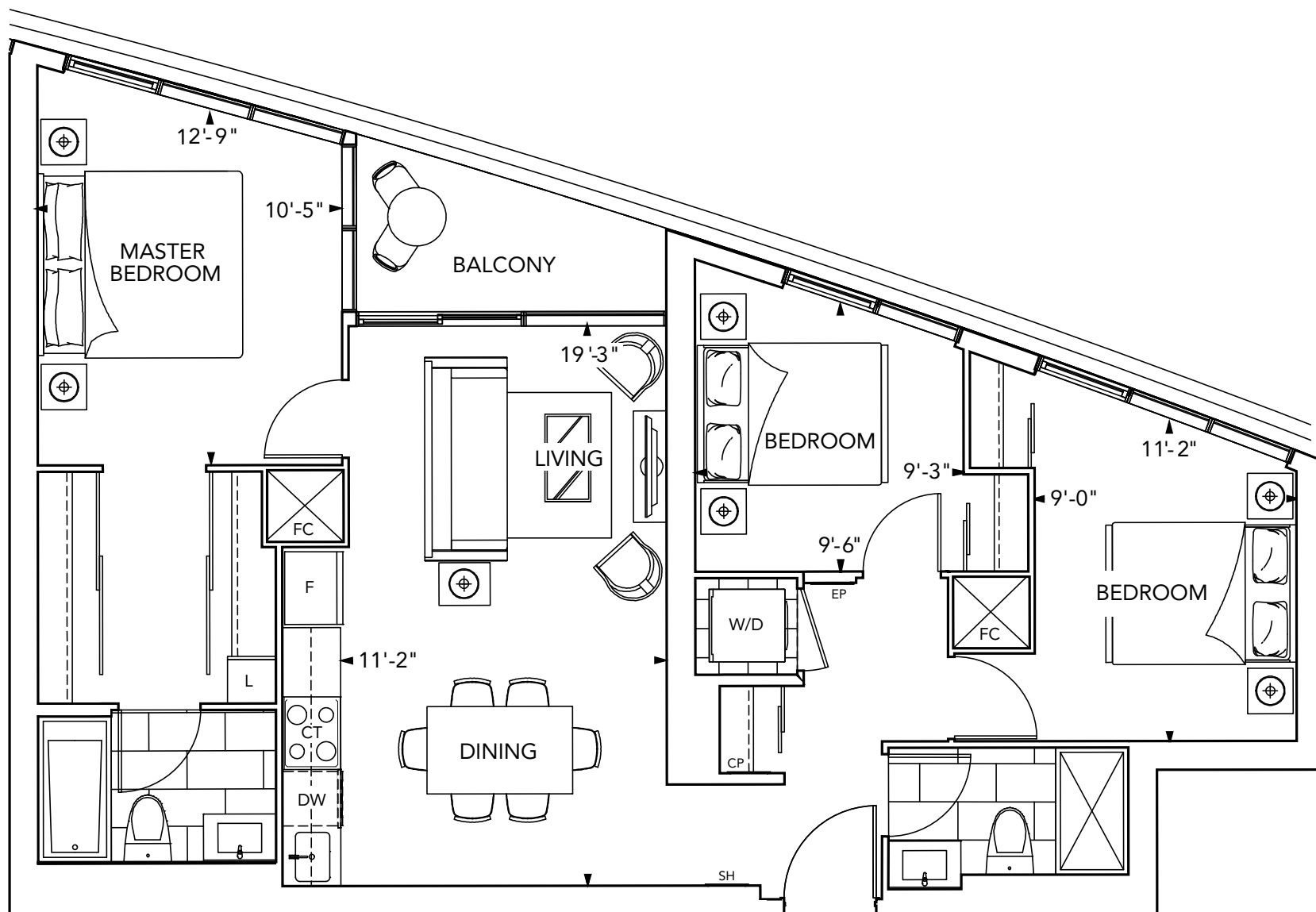
585 Bloor Street East



FLOOR 40-44

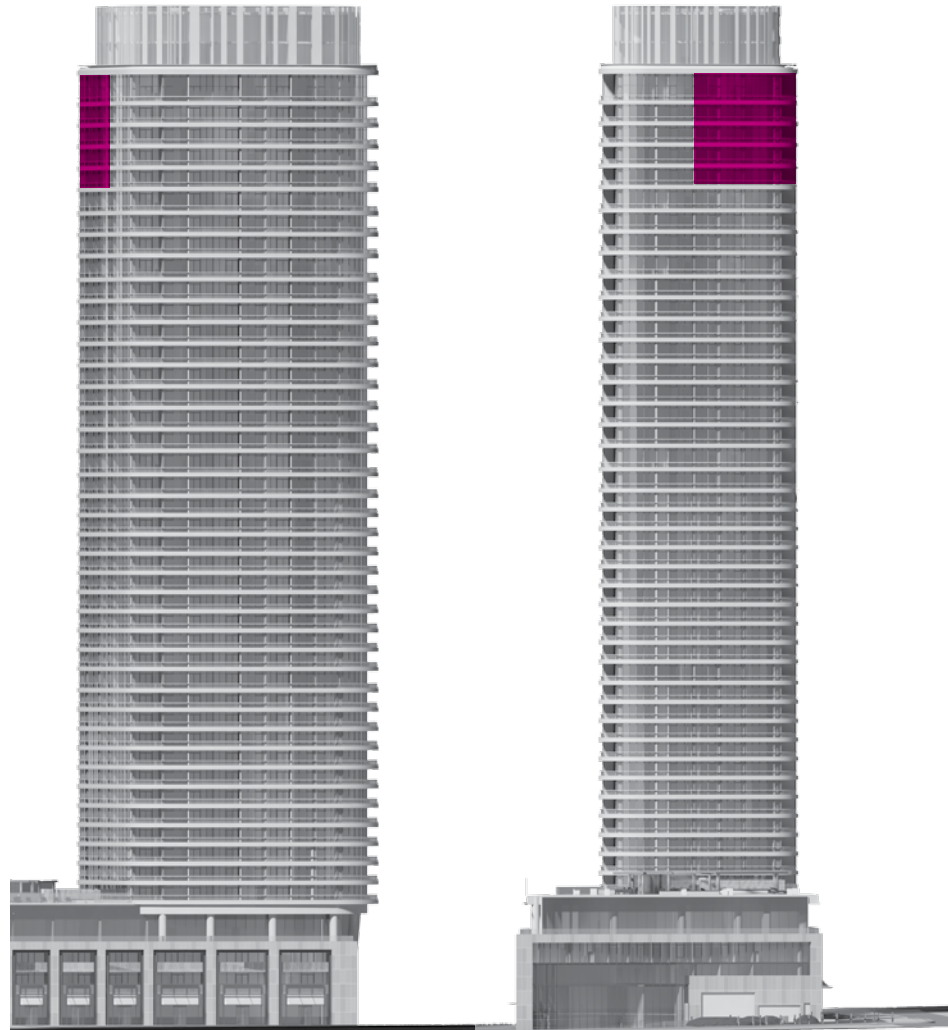


FLOOR 28-39



Suite 3B-2

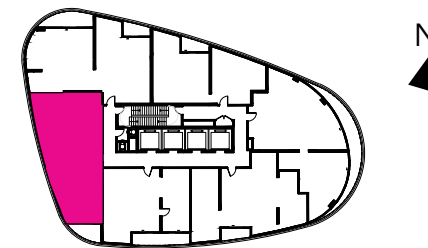
3 Bedroom •



South Face

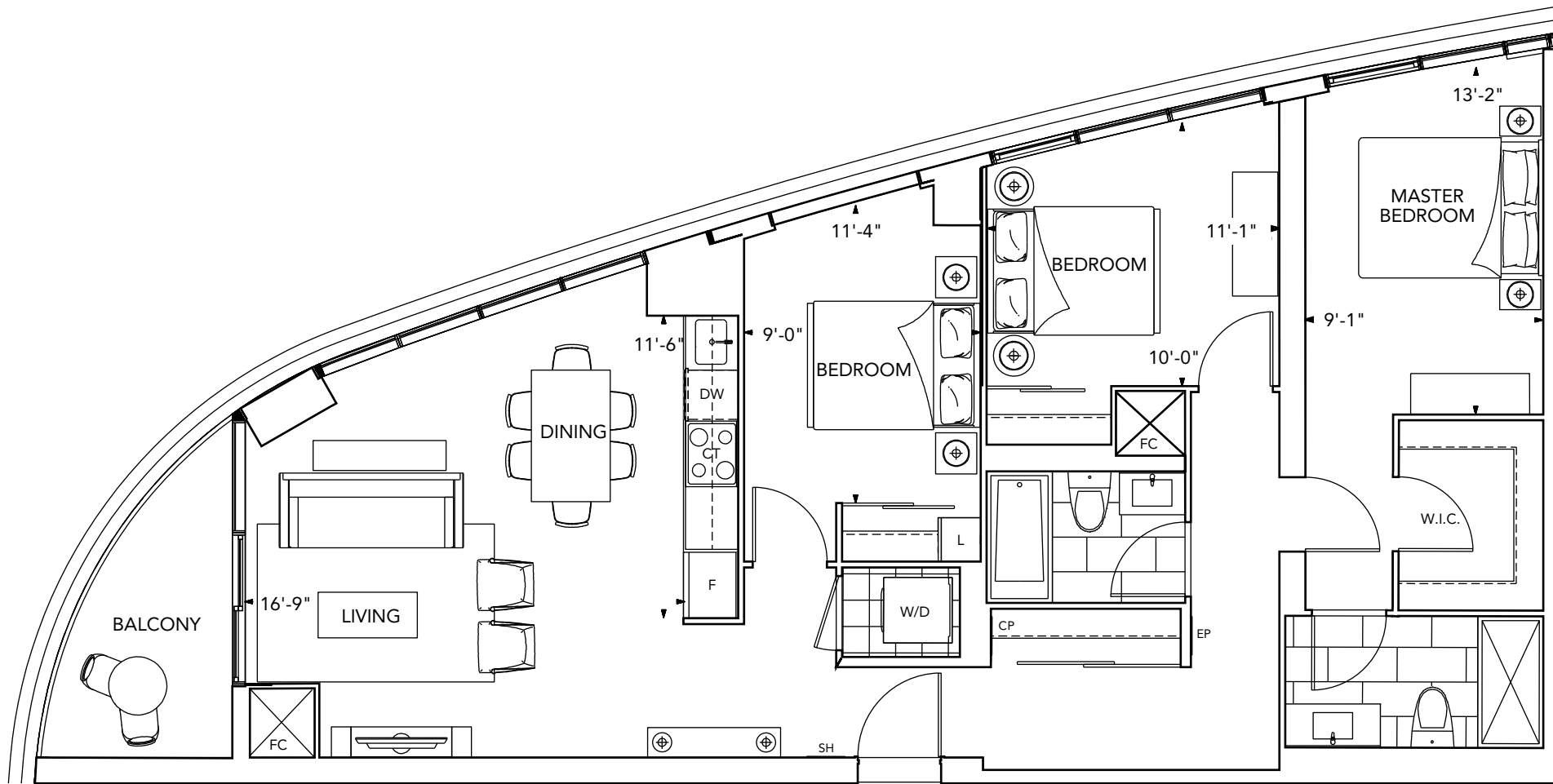
West Face

585 Bloor Street East



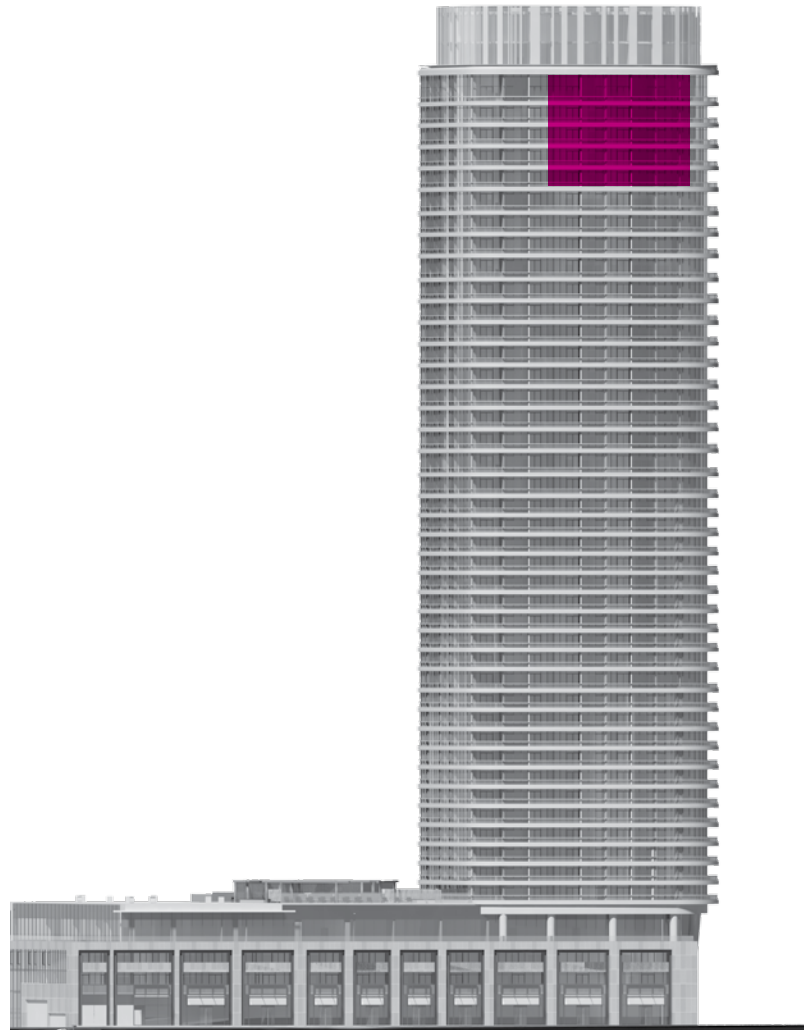
FLOOR 40-44

All dimensions are approximate and subject to normal construction variances. Dimensions may exceed the useable floor area. Sizes and specifications subject to change without notice. Furniture is displayed for illustration purposes only and does not necessarily reflect the electrical plan for the suite. Suites are sold unfurnished. E.&O.E. ©Tridel 2017. @Tridel, "D" design, Tridel Built for Life, Tridel Built for Life Design, and Built Green. Built for Life are registered Trademarks of Tridel Corporation. Project names and logos are Trademarks of their respective owners. All rights reserved. E.&O.E. February 2017.



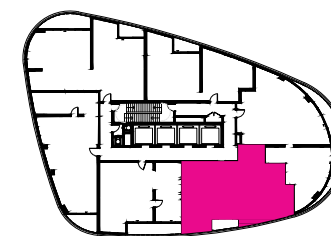
Suite 3C-2

3 Bedroom •



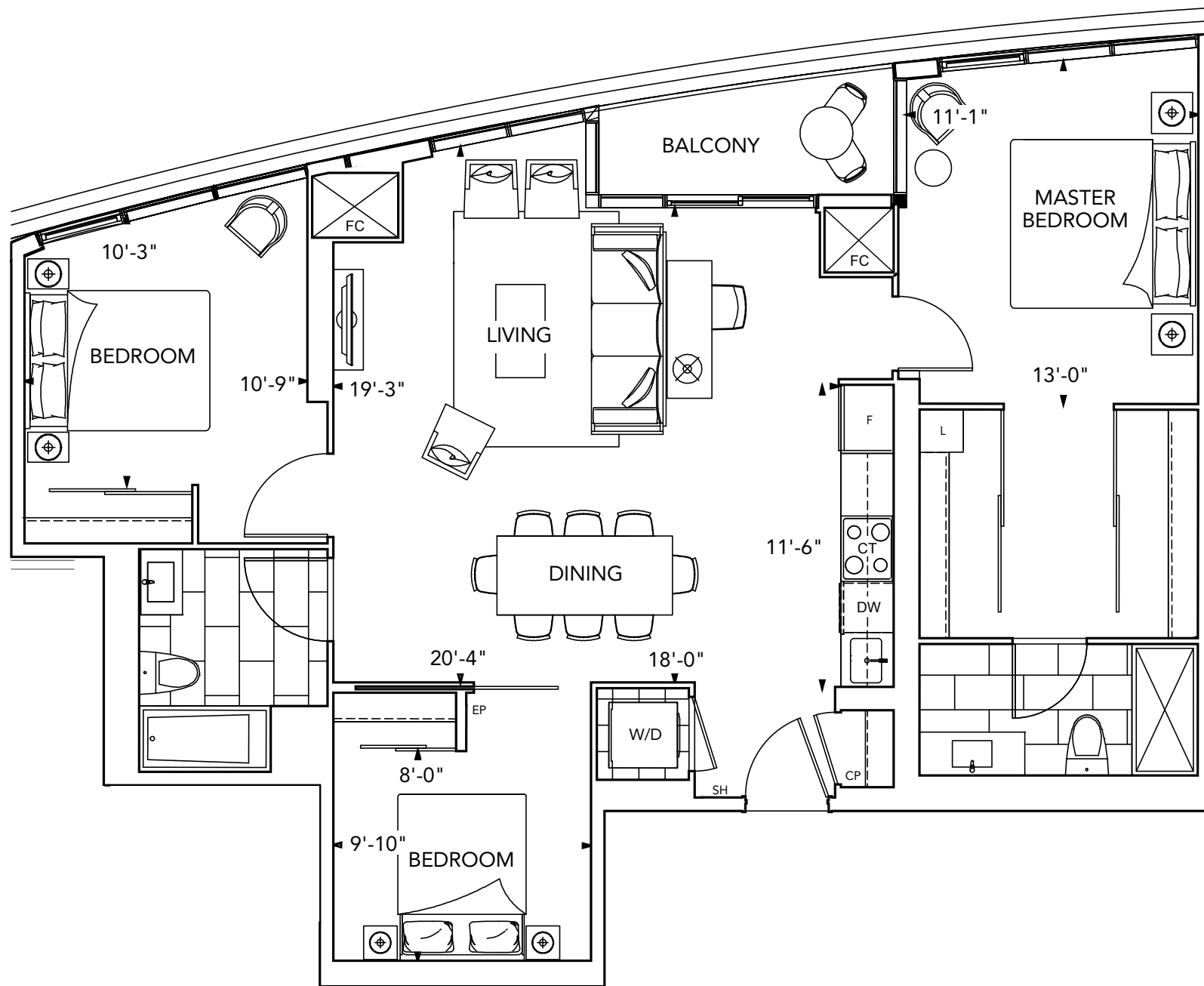
South Face

585 Bloor Street East



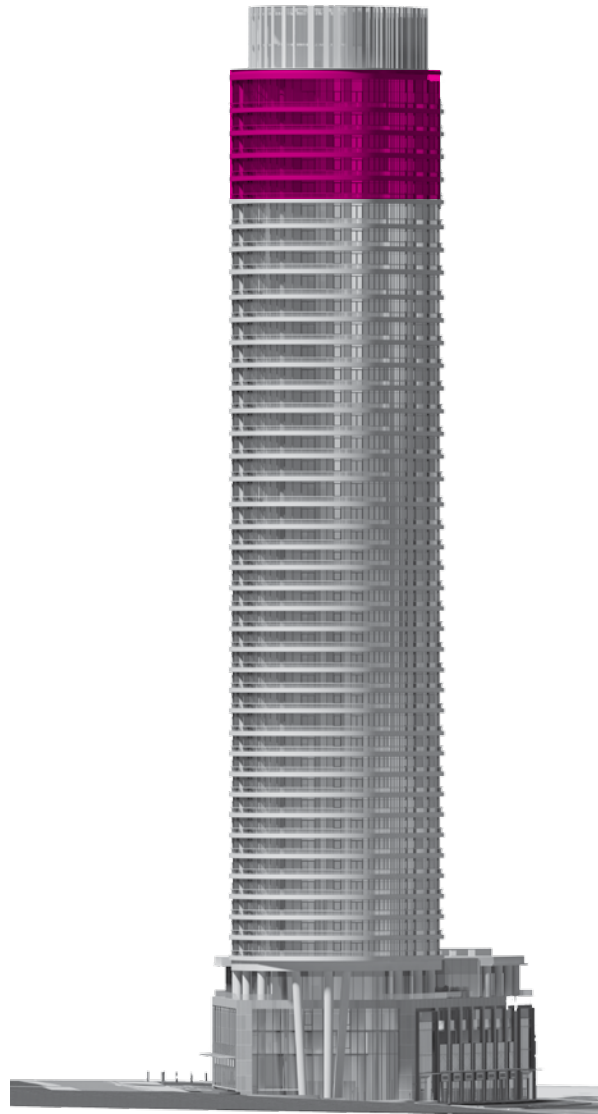
FLOOR 40-44





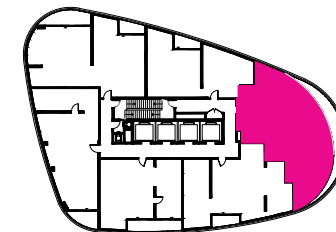
Suite 3D-2

3 Bedroom •



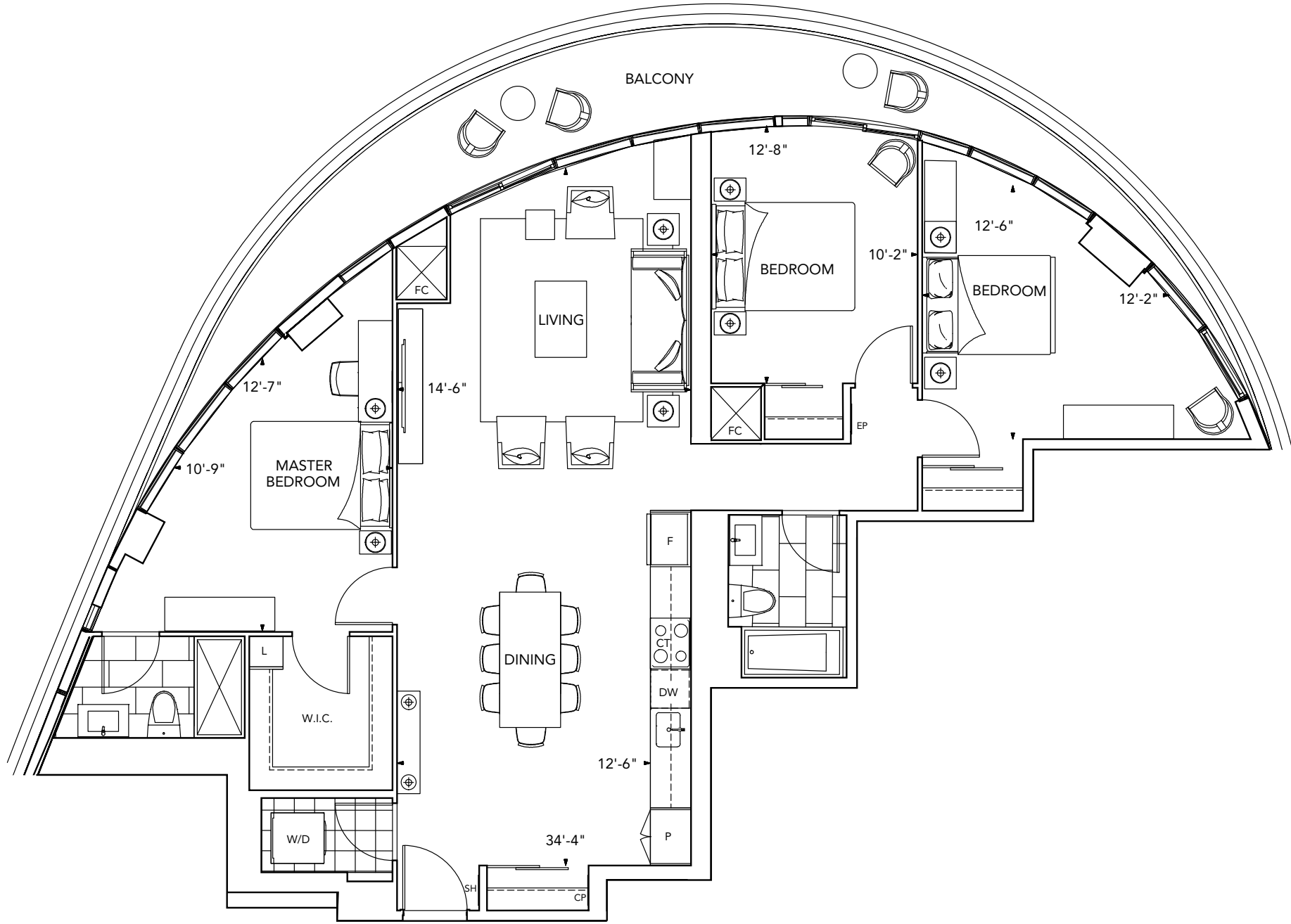
East Face

585 Bloor Street East



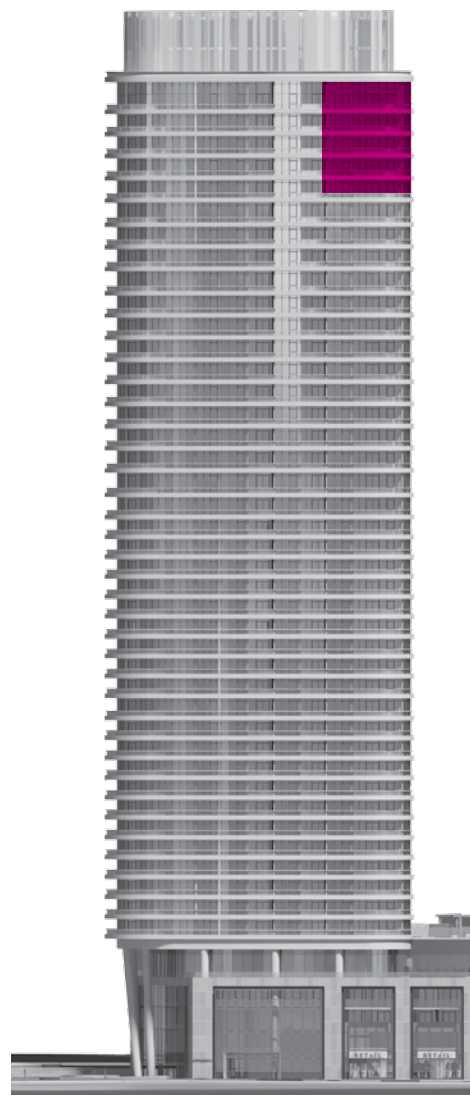
FLOOR 40-44

All dimensions are approximate and subject to normal construction variances. Dimensions may exceed the useable floor area. Sizes and specifications subject to change without notice. Furniture is displayed for illustration purposes only and does not necessarily reflect the electrical plan for the suite. Suites are sold unfurnished. E.&O.E. ©Tridel 2017. @Tridel, "D" design, Tridel Built for Life, Tridel Built for Life Design, and Built Green. Built for Life are registered Trademarks of Tridel Corporation. Project names and logos are Trademarks of their respective owners. All rights reserved. E.&O.E. February 2017.

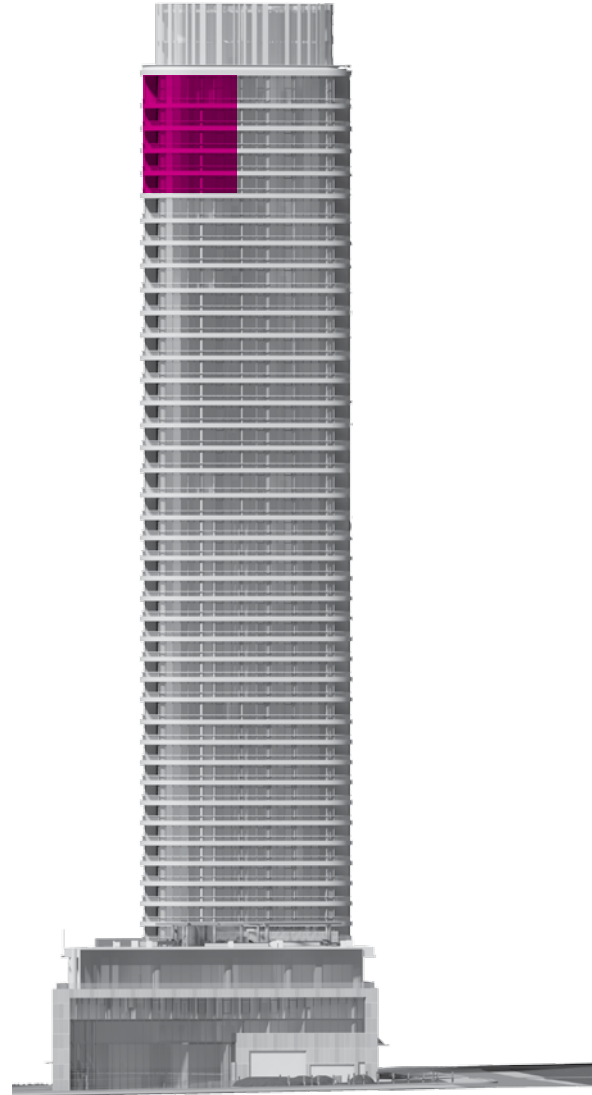


Suite 3E-2

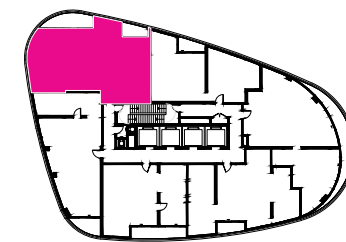
3 Bedroom •



North Face



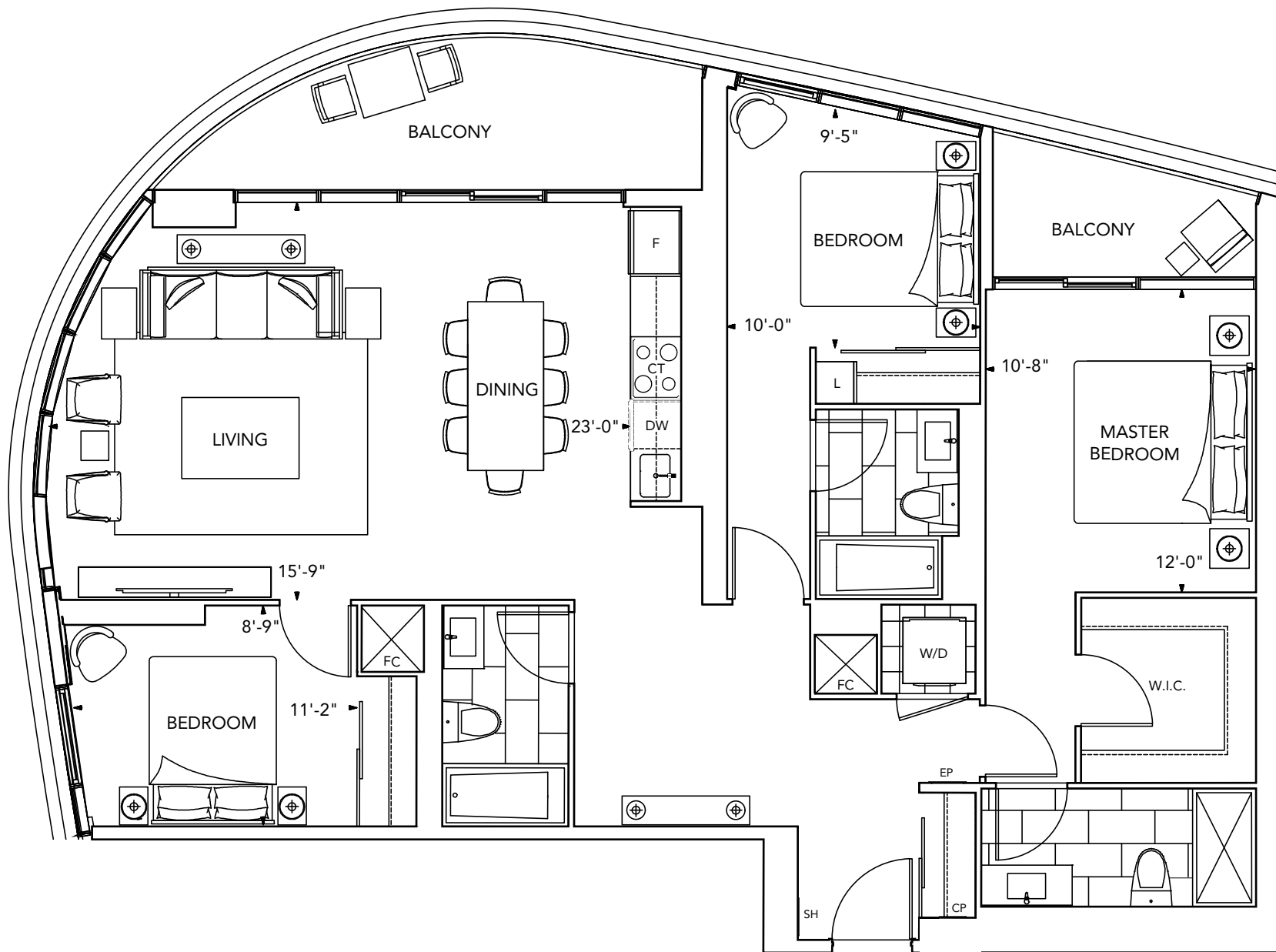
West Face



FLOOR 40-44

585 Bloor Street East

All dimensions are approximate and subject to normal construction variances. Dimensions may exceed the useable floor area. Sizes and specifications subject to change without notice. Furniture is displayed for illustration purposes only and does not necessarily reflect the electrical plan for the suite. Suites are sold unfurnished. E.&O.E. ©Tridel 2017. @Tridel, "D" design, Tridel Built for Life, Tridel Built for Life Design, and Built Green. Built for Life are registered Trademarks of Tridel Corporation. Project names and logos are Trademarks of their respective owners. All rights reserved. E.&O.E. February 2017.



Signature Collection Features & Finishes

GENERAL

- Smooth ceilings painted white to all areas of suite.
- The ceiling height of the unit will be approximately 9' for Floors 2 and 3 and 26 to 44 inclusive, measured from the upper surface of the concrete floor slab to the underside of the concrete ceiling slab, provided however that various areas of the dwelling unit may contain (or be subject to) ceiling bulkheads and/or dropped complete ceilings (included but not limited to bedrooms(s) and den), in order to facilitate the installation of structural components, mechanical systems and/or ductwork, and accordingly in those areas of the unit that are subject to said bulkheads and/or dropped ceilings the overall ceiling height will be reduced accordingly.
- Interior walls are primed and then painted with choice of color, quality latex paint (bathroom(s) painted satin off white, and all woodwork and trim painted with durable white semi-gloss paint). Paints have low levels of volatile organic compounds (VOCs)
- 7' interior contemporary style doors with metal lever hardware and 7" contemporary baseboard with 3" matching door casing
- Elegant swing closet doors*, and/or frosted glass sliding doors* where indicated on plan.
- Terrace to receive paving stone, natural gas BBQ connection, water hose bib, and exterior electrical receptacle.

FLOOR COVERINGS

- Plank engineered hardwood floating floor to all rooms and hallways* except bathroom(s), powder room* and laundry/storage area*.
- Natural stone or porcelain floor tiles for master ensuite and powder room(s)*.
- Designer selected premium porcelain floor tiles in bathroom(s) and laundry.

KITCHEN

- Selection of designer kitchen cabinetry packages with two tone kitchen cabinets featuring contemporary style doors. Finishes include designer hardware.
- Choice of natural stone or quartz kitchen countertop with polished double square edge and undermount stainless steel single bowl sink.
- Choice of natural stone or quartz slab backsplash.
- Polished chrome kitchen faucet with integrated pull out spray.
- Counter depth energy efficient stainless steel 30" refrigerator with bottom mount freezer.
- 30" built-in stainless steel convection oven.
- 30" built-in cooktop.
- 24" integrated dishwasher with matching panel door.
- Built-in stainless steel microwave.
- Built-in integrated hood fan.
- LED undercabinet lighting.

BATHROOM(S)

- Custom vanity with white quartz countertop with undermount rectangular basin.
- Contemporary vanity mirror with integrated lighting.
- 5' white soaker tub with polished chrome faucet*.
- Pot light in ceiling of tub(s)* and shower stall(s)*.
- Pressure balanced and temperature controlled shower faucet.
- High pressure, low-flow shower head(s).
- Polished chrome single lever vanity faucets.
- Dual flush, low-flow high performance white toilet(s).
- Frameless glass shower enclosure* with chrome hardware.
- Polished chrome towel bar and toilet paper holder.

LAUNDRY

- Heavy-duty wiring and receptacle for dryer.
- 27" wide stacked* or side-by-side* front loading dryer and 27" wide Energy Star high efficiency front loading washer (complete with stainless steel braided hose connections).
- Laundry sink* complete with upper and lower cabinetry.





BUILT *for you.*

Award-winning homes.
Relax it's a Tridel.

©Tridel 2017. ©Tridel and Design, "D" design, Tridel Built for Life and design, Built Green. Built for Life and design are registered Trademarks of Tridel Corporation. All rights reserved. Illustrations are artist's concept only. Buildings and views are not to scale. The photographs in this brochure do not necessarily depict actual features but represent similar quality and design that will be offered at Via Bloor. Features and finishes may vary by suite designs. See sales representative for details. Specifications subject to change without notice. E.&O.E. February 2017.